



White Cottage Mogador, Tadworth, KT20 7HX
Price Guide £900,000

This five/six bedroom detached house is located in a semi-rural setting on the edge of the Surrey Hills, approached via a private drive and offering parking for several vehicles. The large entrance hall gives access to the spacious living rooms and kitchen. Stairs lead to the first floor with 5/6 bedrooms and a family bathroom. Outside the garden is mostly laid to lawn, on 3 sides of the property and borders directly onto Woodland. The property requires extensive modernisation.

FRONT DOOR

Leading through to:

ENTRANCE HALL 18'11 x 13'1 (5.77m x 3.99m)

Front aspect and side aspect Upvc double glazed leaded light windows, radiator, wood flooring, feature fireplace, stairs leading to first floor landing, understairs storage, further radiator, picture rail, archway to:

SITTING ROOM 13'6 x 14'11 (4.11m x 4.55m)

Rear aspect double glazed window overlooking rear garden, Inglenook fireplace, continue of wood flooring, radiator, power points, picture rail.

DINING ROOM 15'1 x 18' (4.60m x 5.49m)

Side aspect Upvc double glazed doors giving access to garden, rear aspect double glazed windows overlooking garden, Herringbone wood parquet flooring, feature stone fireplace, picture rail, power points.

KITCHEN 11'10 x 16'2 (3.61m x 4.93m)

A range of wall mounted and base level units, Butler style sink, five ring gas hob, integrated oven, space for American style fridge/freezer, breakfast bar, tiled floor, space and plumbing for washing machine, side aspect and front aspect double glazed windows, wall mounted boiler, control panel for central heating and hot water, side aspect double glazed door, door to:

STUDY 9'1 x 11'8 (2.77m x 3.56m)

Rear aspect sliding patio doors, side aspect double glazed window, wood flooring, power points, feature fireplace.

STAIRS LEADING TO HALF LANDING

Front aspect Upvc double glazed leaded light windows, radiator, stairs leading to:

BEDROOM 6 7'3 x 7' (2.21m x 2.13m)

Front aspect double glazed window, radiator.

FAMILY BATHROOM

A white three piece suite comprising low level W.C., wash hand basin, panel enclosed bath with mixer tap and shower attachment, wood flooring, part tiled walls, side aspect double glazed window.

FIRST FLOOR LANDING

Wood flooring, airing cupboard, access to loft via hatch, door to:

MAIN BEDROOM 17'7 x 17'9 (5.36m x 5.41m)

Side aspect and rear aspect double glazed windows, two radiators, feature fireplace, power points, picture rail.

BEDROOM 2 10'8 x 9'3 (3.25m x 2.82m)

Side aspect double glazed window, radiator, power points, feature fireplace, picture rail.

BEDROOM 3 7'11 x 9'8 (2.41m x 2.95m)

Side aspect Upvc double glazed leaded light window, wood flooring, feature fireplace, radiator, power points.

BEDROOM 4 11'3 x 11'2 (3.43m x 3.40m)

Rear aspect double glazed window, radiator, power points, fitted cupboard, feature fireplace, picture rail.

BEDROOM 5 11'10 x 13'2 (3.61m x 4.01m)

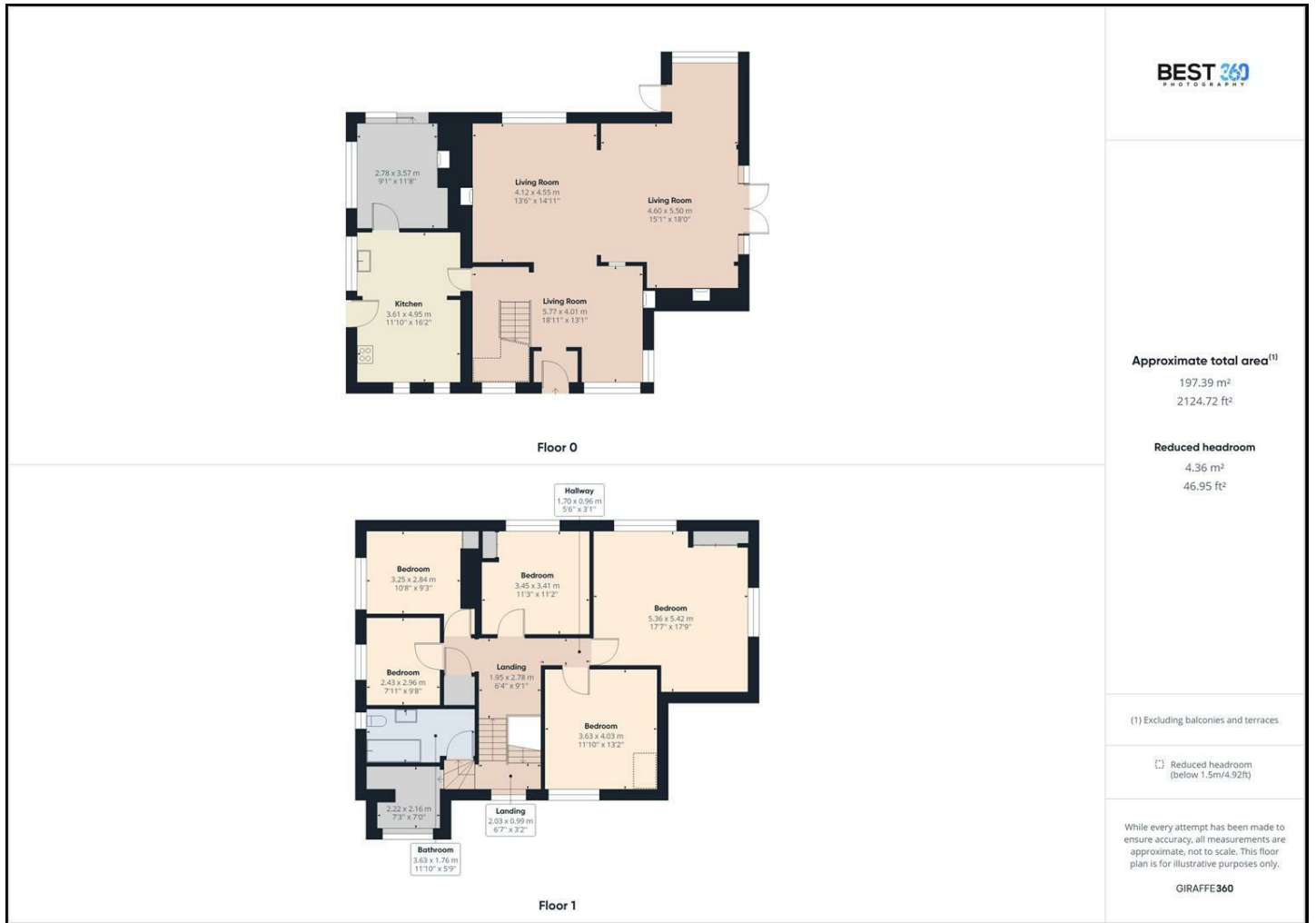
Front aspect double glazed leaded light window, radiator, power points, fitted cupboard, picture rail.

OUTSIDE

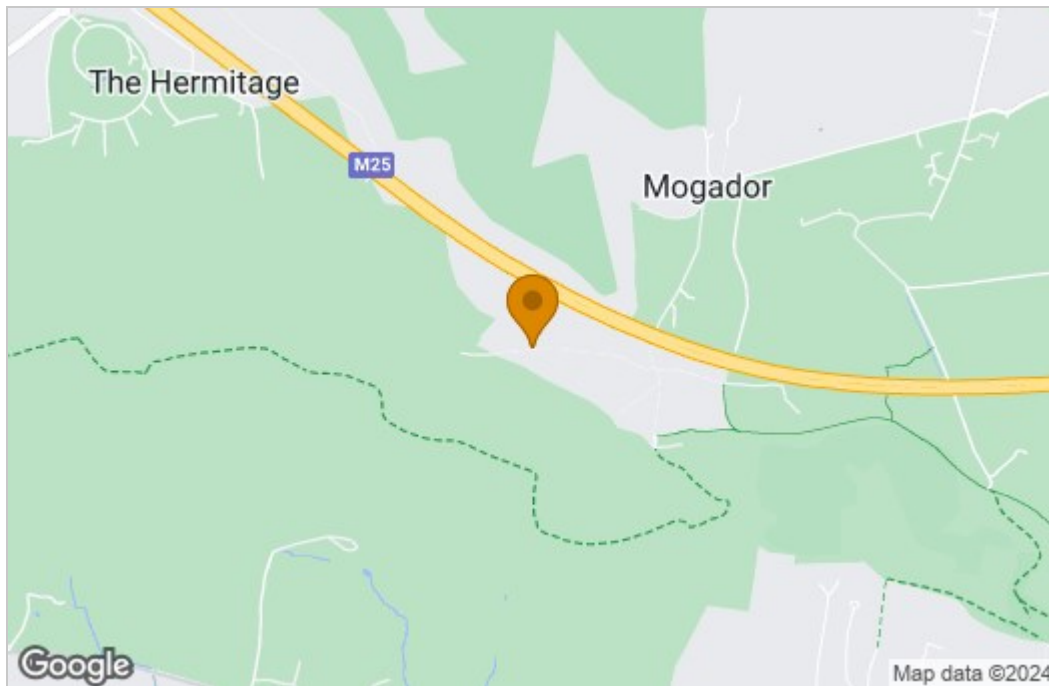
Gardens

PARKING FOR SEVERAL CARS

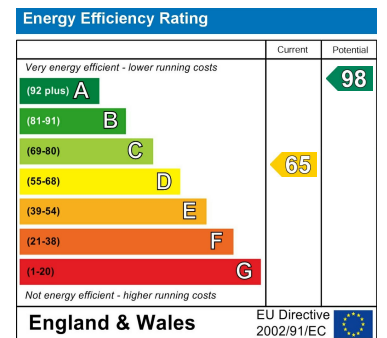
Floor Plan



Area Map



Energy Efficiency Graph



These particulars, whilst believed to be accurate are set out as a general outline only for guidance and do not constitute any part of an offer or contract. Intending purchasers should not rely on them as statements of representation of fact, but must satisfy themselves by inspection or otherwise as to their accuracy. No person in this firm's employment has the authority to make or give any representation or warranty in respect of the property.