

Wessington, Derbyshire

*Washington
View*



The Cressbrook

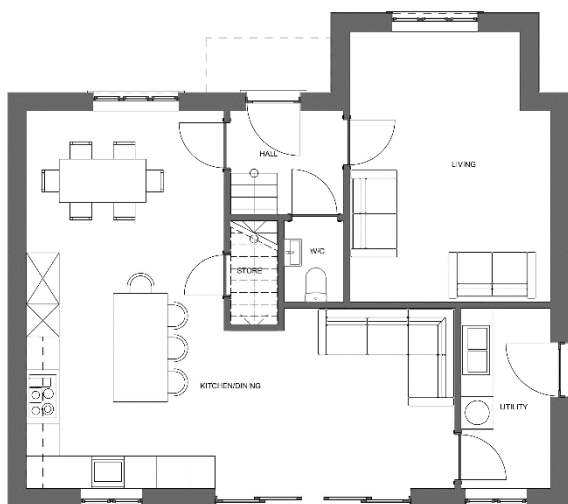
- **PHASE 1 NOW AVAILABLE TO RESERVE**
- * Customisations available for early reservations *
- Exclusive development of just 9 individual family homes from bespoke, independent developer
- Could be the last opportunity to purchase a new property in a sought-after village location
- Fully equipped, high-specification “shaker” style kitchen with your choice of “Farrow & Ball” colour
- Underfloor heating throughout the ground floor
- Huge sliding patio doors opening to a surprisingly large garden
- Garage with remote controlled electric door
- Completion Summer 2025



hannells.co.uk/washington-view

Welcome **home.**

The Cressbrook



Ground Floor

Entrance Hall

Cloakroom/WC

Living Room: 3850 x 5200 (max)

Kitchen Diner: 8300 x 7300 (max)

Utility Room: 1700 x 3500

(in mm)

For more details call:

01332 389 444

First Floor

Landing

Bedroom One: 3850 x 4700 (max)

En Suite

Bedroom Two: 3100 x 4000

En Suite

Bedroom Three: 3800 x 3500

Bedroom Four: 3500 x 3700 (max)

Family Bathroom

DISCLAIMER

All images used are for illustrative purposes only. Individual features such as windows, brick and other materials' colours may vary, as may heating and electrical layouts. The specifications of houses are correct at the date of print but may be subject to change as necessary without notice. Images are indicative of the quality and style of the specification and may not represent wholly the actual fittings and furnishings at the development. Specification is not intended to form any part of any contract or warranty unless specifically incorporated in writing into the contract.

The floorplans depict a typical layout of this house type. They are not intended to be used for carpet sizes, appliance sizes or items of furniture. These floorplans are a guide only and may be subject to change. For exact plot specification, details of external and internal finishes, dimensions and floorplan differences, please consult the Sales Executive. July 2024.