

Floorplans

GLASSHOUSE GARDENS

STRATFORD LONDON

A DEVELOPMENT BY





Contents

Site Map 1

Glasshouse Gardens – East

Ground Floor 2

First Floor 4

Floors 2-5 6

Floors 6-14 8

Floor 15 10

Floor 16 12

Glasshouse Gardens – West

Ground Floor 14

First Floor 16

Floors 2-25 18

Floor 26 20

Floors 27-29 22

Stunning Interiors 24

Apartment Finishes 25

Development Team 27

Contact Details 28

Computer generated imagery.

These images are for illustrative purposes only; please see disclaimer on the back page.

Site Map

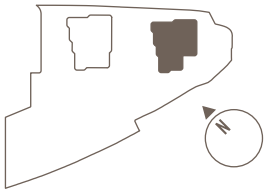


“The horizontal floor strata are a dynamic signature of Glasshouse Gardens, serving to unify the towers and the surrounding landscape. Our designs ensure maximum daylight into the apartments with aspects that take advantage of views across Queen Elizabeth Olympic Park, the City and West End”

Allies and Morrison, Architects

- 01. Main Entrance
- 02. The Courtyard
- 03. The Lawn
- 04. Glasshouse Gardens Park Entry
- 05. Upper Ha Ha
- 06. Active Ha Ha
- 07. Multi Use Amphitheatre
- 08. The Embankment
- 09. Private Terraces
- 10. Car Park & Service Access
- 11. Taxi Drop-Off
- 12. Motorcycle Parking
- 13. Bicycle Storage
- 14. Lobby and Concierge
- 15. Private Residents' Gym
- 16. Chilled Delivery Storage

Glasshouse Gardens – East Ground Floor



- Key**
- Wheelchair Adaptable
 - Studio
 - One Bedroom
 - Two Bedrooms
 - Three Bedrooms
 - Shared Ownership/Equity

- Dimension Indicator
- W Fitted Wardrobe
- W/D Washer Dryer
- HEC Heating & Electrical Controls
- C Coat Cupboard
- OW Opening Window



Apartment Details

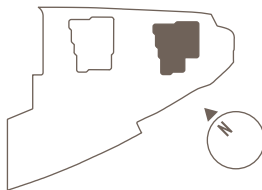
APARTMENT 1		3 Bedrooms
Internal Area	106 sq m	1,141 sq ft
Garden Area	90 sq m	968 sq ft
Living/Dining/Kitchen	6.9 x 4.2m	22'6" x 13'6"
Master Bedroom	5.2 x 3.2m	16'9" x 10'5"
Bedroom 2	4.7 x 2.8m	15' x 9'
Bedroom 3	3.4 x 3.3m	11' x 11'

APARTMENT 2		3 Bedrooms
Internal Area	111 sq m	1,125 sq ft
Garden Area	130 sq m	1,399 sq ft
Living/Dining/Kitchen	6.7 x 5.6m	21'9" x 18'2"
Master Bedroom	5.2 x 3.2m	16'9" x 10'5"
Bedroom 2	5.6 x 3.4m	18' x 11'
Bedroom 3	4.3 x 3.1m	14' x 10'

This image is for illustrative purposes only.
The full legal disclaimer can be found on the back page of the Glasshouse Gardens floor plan booklet.
DECEMBER 2013.

Glasshouse Gardens – East

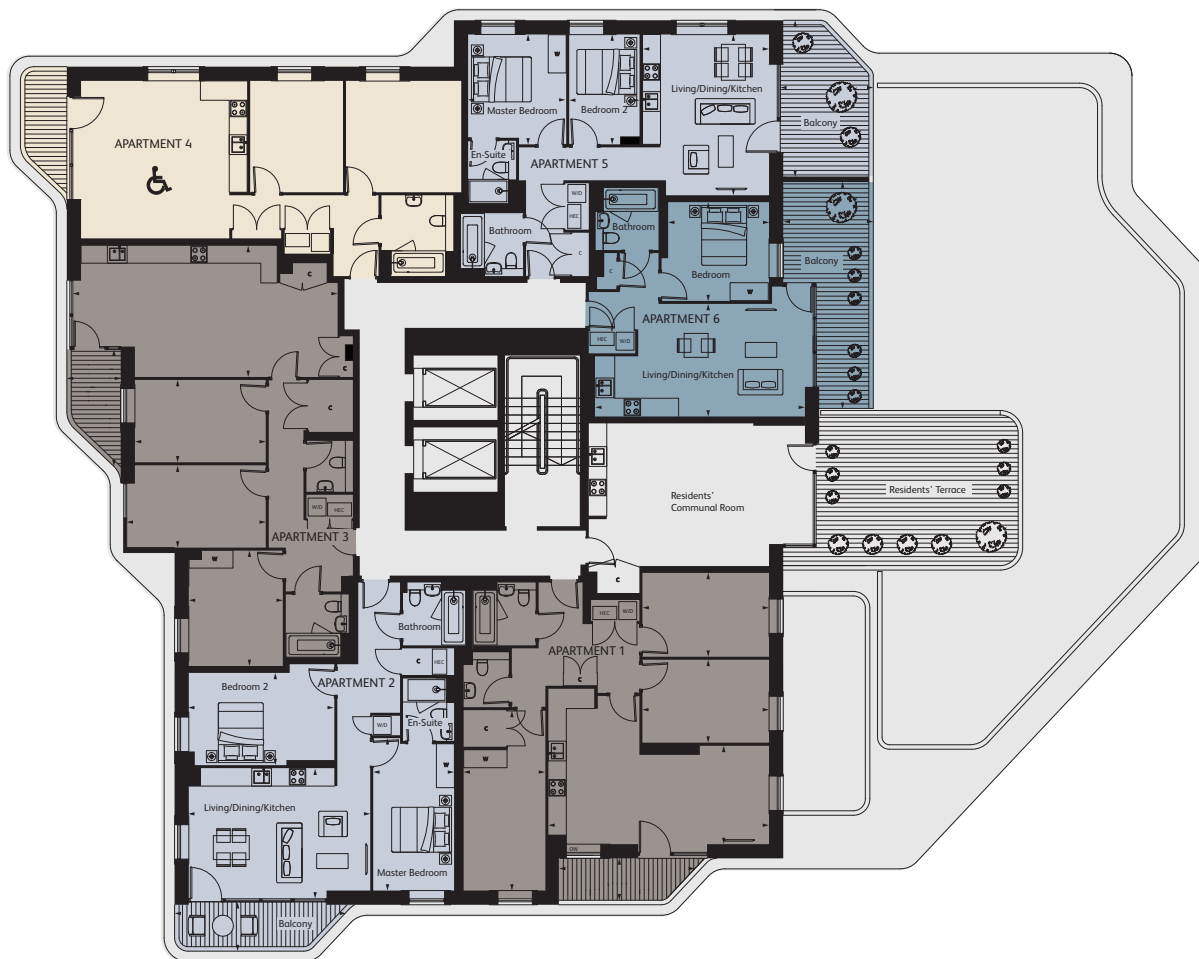
First Floor



Key

- Wheelchair Adaptable
- Studio
- One Bedroom
- Two Bedrooms
- Three Bedrooms
- Shared Ownership/Equity

- Dimension Indicator
- W Fitted Wardrobe
- W/D Washer Dryer
- HEC Heating & Electrical Controls
- C Coat Cupboard
- OW Opening Window



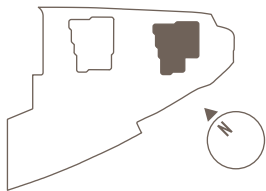
Apartment Details

APARTMENT 1			APARTMENT 4		
3 Bedrooms			2 Bedrooms		
Internal Area	95 sq m	1,023 sq ft	Internal Area	74 sq m	797 sq ft
Balcony Area	6 sq m	65 sq ft	Balcony Area	6 sq m	65 sq ft
Living/Dining/Kitchen	7.4 x 3.3m	24'2" x 10'8"	Living/Dining/Kitchen	5.6 x 5.3m	18'2" x 17'3"
Master Bedroom	4.7 x 2.7m	15'4" x 9'	Master Bedroom	3.9 x 3.7m	12'6" x 12'2"
Bedroom 2	4.2 x 2.8m	14' x 9'	Bedroom 2	3.1 x 3.7m	10' x 12'
Bedroom 3	4.2 x 2.8m	14' x 9'			
APARTMENT 2			APARTMENT 5		
2 Bedrooms			2 Bedrooms		
Internal Area	78 sq m	840 sq ft	Internal Area	66 sq m	710 sq ft
Balcony Area	8 sq m	86 sq ft	Balcony Area	15 sq m	161 sq ft
Living/Dining/Kitchen	6.1 x 4.4m	19'9" x 14'3"	Living/Dining/Kitchen	5.4 x 4.2m	17'6" x 13'9"
Master Bedroom	4.9 x 2.8m	16'1" x 9'	Master Bedroom	3.7 x 3.3m	12' x 10'7"
Bedroom 2	4.9 x 3.1m	16' x 10'	Bedroom 2	3.7 x 2.4m	12' x 8'
APARTMENT 3			APARTMENT 6		
3 Bedrooms			1 Bedroom		
Internal Area	99 sq m	1,066 sq ft	Internal Area	50 sq m	538 sq ft
Balcony Area	6 sq m	65 sq ft	Balcony Area	18 sq m	194 sq ft
Living/Dining/Kitchen	8.6 x 4.4m	28'4" x 14'4"	Living/Dining/Kitchen	6.9 x 3.8m	22'8" x 12'3"
Master Bedroom	3.9 x 3.1m	12'6" x 10'3"	Bedroom	3.4 x 3.3m	11'1" x 10'8"
Bedroom 2	4.4 x 2.8m	14' x 9'			
Bedroom 3	4.4 x 2.8m	14' x 0'			

This image is for illustrative purposes only.
The full legal disclaimer can be found on the back page of the Glasshouse Gardens floor plan booklet.
DECEMBER 2013.

Glasshouse Gardens – East

Floors 2-5



Key

- Wheelchair Adaptable
- Studio
- One Bedroom
- Two Bedrooms
- Three Bedrooms
- Shared Ownership/Equity

- Dimension Indicator
- Fitted Wardrobe
- W/D Washer Dryer
- HEC Heating & Electrical Controls
- C Coat Cupboard
- OW Opening Window

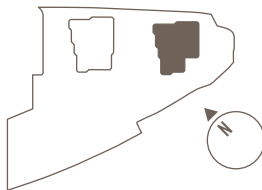


Apartment Details

APARTMENT 1			Studio	APARTMENT 4			3 Bedrooms
Internal Area	39 sq m	420 sq ft		Internal Area	97 sq m	1,044 sq ft	
Balcony Area	2 sq m	22 sq ft		Balcony Area	6 sq m	65 sq ft	
Living/Dining/ Kitchen/Bedroom	5.3 x 5.0m	17'5" x 16'5"		Living/Dining/Kitchen	9.1 x 3.5m	29'8" x 11'6"	
				Master Bedroom	3.9 x 3.1m	12'6" x 10'3"	
				Bedroom 2	4.6 x 2.8m	15' x 9'	
				Bedroom 3	4.4 x 2.8m	14' x 9'	
APARTMENT 2			3 Bedrooms	APARTMENT 5			3 Bedrooms
Internal Area	95 sq m	1,023 sq ft		Internal Area	96 sq m	1,033 sq ft	
Balcony Area	6 sq m	65 sq ft		Balcony Area	6 sq m	65 sq ft	
Living/Dining/Kitchen	7.4 x 3.3m	24'2" x 10'8"		Living/Dining/Kitchen	6.0 x 5.9m	19'5" x 19'2"	
Master Bedroom	4.7 x 2.7m	15'4" x 9'		Master Bedroom	4.5 x 3.2m	14'7" x 10'4"	
Bedroom 2	4.2 x 2.8m	14' x 9'		Bedroom 2	4.3 x 2.8m	14' x 9'	
Bedroom 3	4.2 x 2.8m	14' x 9'		Bedroom 3	4.3 x 2.8m	14' x 9'	
APARTMENT 3			2 Bedrooms	APARTMENT 6			3 Bedrooms
Internal Area	78 sq m	840 sq ft		Internal Area	96 sq m	1,033 sq ft	
Balcony Area	8 sq m	86 sq ft		Balcony Area	6 sq m	65 sq ft	
Living/Dining/Kitchen	6.1 x 4.4m	19'9" x 14'3"		Living/Dining/Kitchen	7.2 x 5.6m	23'7" x 18'5"	
Master Bedroom	4.9 x 2.8m	16'1" x 9'		Master Bedroom	4.9 x 2.8m	16'1" x 9'	
Bedroom 2	4.9 x 3.1m	16' x 10'		Bedroom 2	4.4 x 2.8m	14' x 9'	
				Bedroom 3	3.7 x 3.3m	12' x 11'	

This image is for illustrative purposes only.
The full legal disclaimer can be found on the back page of the Glasshouse Gardens floor plan booklet.
DECEMBER 2013.

Glasshouse Gardens – East Floors 6-14



Key

- Wheelchair Adaptable
- Studio
- One Bedroom
- Two Bedrooms
- Three Bedrooms
- Shared Ownership/Equity

- Dimension Indicator
- Fitted Wardrobe
- Washer Dryer
- Heating & Electrical Controls
- Coat Cupboard
- Opening Window



Download and launch the App.

To view an example one bed apartment on this floor in 3D, hold your smart phone or tablet device over this page.

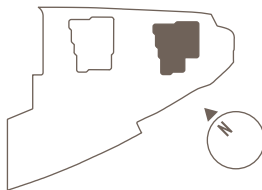


Apartment Details

APARTMENT 1			1 Bedroom			APARTMENT 4			1 Bedroom			APARTMENT 7			2 Bedrooms		
Internal Area	52 sq m	560 sq ft	Internal Area	50 sq m	538 sq ft	Internal Area	66 sq m	710 sq ft	Internal Area	66 sq m	710 sq ft	Internal Area	66 sq m	710 sq ft	Internal Area	66 sq m	710 sq ft
Balcony Area	6 sq m	65 sq ft	Balcony Area	6 sq m	65 sq ft	Balcony Area	6 sq m	65 sq ft	Balcony Area	6 sq m	65 sq ft	Balcony Area	6 sq m	65 sq ft	Balcony Area	6 sq m	65 sq ft
Living/Dining/Kitchen	7.2 x 4.0m	23'7" x 13'3"	Living/Dining/Kitchen	7.3 x 3.6m	23'9" x 11'9"	Living/Dining/Kitchen	5.4 x 4.2m	17'6" x 13'9"	Living/Dining/Kitchen	5.4 x 4.2m	17'6" x 13'9"	Living/Dining/Kitchen	5.4 x 4.2m	17'6" x 13'9"	Living/Dining/Kitchen	5.4 x 4.2m	17'6" x 13'9"
Bedroom	3.7 x 3.5m	12'2" x 11'4"	Bedroom	4.1 x 3.1m	13'5" x 10'3"	Bedroom	3.5 x 3.3m	11'3" x 10'7"	Bedroom	3.5 x 3.3m	11'3" x 10'7"	Bedroom	3.5 x 3.3m	11'3" x 10'7"	Bedroom	3.5 x 3.3m	11'3" x 10'7"
						Bedroom 2	3.7 x 2.4m	12' x 11'	Bedroom 2	3.7 x 2.4m	12' x 11'	Bedroom 2	3.7 x 2.4m	12' x 11'	Bedroom 2	3.7 x 2.4m	12' x 11'
APARTMENT 2			2 Bedrooms			APARTMENT 5			1 Bedroom			APARTMENT 8			1 Bedroom		
Internal Area	79 sq m	850 sq ft	Internal Area	52 sq m	560 sq ft	Internal Area	50 sq m	538 sq ft	Internal Area	50 sq m	538 sq ft	Internal Area	50 sq m	538 sq ft	Internal Area	50 sq m	538 sq ft
Balcony Area	12 sq m	129 sq ft	Balcony Area	6 sq m	65 sq ft	Balcony Area	6 sq m	65 sq ft	Balcony Area	6 sq m	65 sq ft	Balcony Area	6 sq m	65 sq ft	Balcony Area	6 sq m	65 sq ft
Living/Dining/Kitchen	7.4 x 3.1m	24'2" x 10'1"	Living/Dining/Kitchen	6.6 x 3.7m	21'5" x 12'2"	Living/Dining/Kitchen	7.2 x 3.8m	23'7" x 12'3"	Living/Dining/Kitchen	6.6 x 3.7m	21'5" x 12'2"	Living/Dining/Kitchen	7.2 x 3.8m	23'7" x 12'3"	Living/Dining/Kitchen	7.2 x 3.8m	23'7" x 12'3"
Master Bedroom	5.8 x 2.8m	18'9" x 9'	Master Bedroom	5.1 x 2.8m	16'7" x 9'3"	Master Bedroom	3.4 x 3.3m	11'1" x 10'8"	Master Bedroom	5.1 x 2.8m	16'7" x 9'3"	Master Bedroom	3.4 x 3.3m	11'1" x 10'8"	Master Bedroom	5.1 x 2.8m	16'7" x 9'3"
Bedroom 2	5.3 x 2.8m	17' x 9'	Bedroom 2			Bedroom 2			Bedroom 2			Bedroom 2			Bedroom 2		
APARTMENT 3			2 Bedrooms			APARTMENT 6			2 Bedrooms								
Internal Area	76 sq m	818 sq ft	Internal Area	72 sq m	775 sq ft	Internal Area	72 sq m	775 sq ft	Internal Area	72 sq m	775 sq ft	Internal Area	72 sq m	775 sq ft	Internal Area	72 sq m	775 sq ft
Balcony Area	8 sq m	86 sq ft	Balcony Area	6 sq m	65 sq ft	Balcony Area	6 sq m	65 sq ft	Balcony Area	6 sq m	65 sq ft	Balcony Area	6 sq m	65 sq ft	Balcony Area	6 sq m	65 sq ft
Living/Dining/Kitchen	6.1 x 4.4m	19'9" x 14'3"	Living/Dining/Kitchen	5.6 x 4.9m	18'2" x 16'1"	Living/Dining/Kitchen	5.6 x 4.9m	18'2" x 16'1"	Living/Dining/Kitchen	5.6 x 4.9m	18'2" x 16'1"	Living/Dining/Kitchen	5.6 x 4.9m	18'2" x 16'1"	Living/Dining/Kitchen	5.6 x 4.9m	18'2" x 16'1"
Master Bedroom	4.9 x 2.8m	16'1" x 9'	Master Bedroom	3.9 x 3.7m	12'6" x 12'2"	Master Bedroom	3.9 x 3.7m	12'6" x 12'2"	Master Bedroom	3.9 x 3.7m	12'6" x 12'2"	Master Bedroom	3.9 x 3.7m	12'6" x 12'2"	Master Bedroom	3.9 x 3.7m	12'6" x 12'2"
Bedroom 2	4.9 x 2.8m	16' x 9'	Bedroom 2	3.7 x 3.1m	12' x 10'	Bedroom 2	3.7 x 3.1m	12' x 10'	Bedroom 2	3.7 x 3.1m	12' x 10'	Bedroom 2	3.7 x 3.1m	12' x 10'	Bedroom 2	3.7 x 3.1m	12' x 10'

This image is for illustrative purposes only.
The full legal disclaimer can be found on the back page of the Glasshouse Gardens floor plan booklet.
DECEMBER 2013.

Glasshouse Gardens – East Floor 15



Key

- Wheelchair Adaptable
- Studio
- One Bedroom
- Two Bedrooms
- Three Bedrooms
- Shared Ownership/Equity

- Dimension Indicator
- Fitted Wardrobe
- W/D Washer Dryer
- HEC Heating & Electrical Controls
- C Coat Cupboard
- OW Opening Window



Download and launch the App.

To view an example two bed apartment on this floor in 3D, hold your smart phone or tablet device over this page.

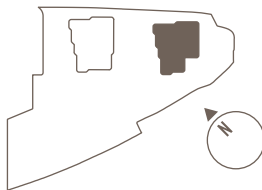


Apartment Details

APARTMENT 1			2 Bedrooms		
Internal Area	78 sq m	840 sq ft	Internal Area	78 sq m	840 sq ft
Terrace Area	36 sq m	387 sq ft	Balcony Area	24 sq m	258 sq ft
Living/Dining/Kitchen	5.5 x 4.8m	17'9" x 15'7"	Living/Dining/Kitchen	6.5 x 4.3m	21'2" x 14'2"
Master Bedroom	7.2 x 2.8m	23'7" x 9'	Master Bedroom	7.0 x 3.2m	23' x 10'3"
Bedroom 2	3.7 x 3.5m	12' x 11'	Bedroom 2	4.0 x 2.9m	13' x 10'
APARTMENT 2			3 Bedrooms		
Internal Area	106 sq m	1,141 sq ft	Internal Area	95 sq m	1,023 sq ft
Terrace Area	46 sq m	495 sq ft	Balcony Area	14 sq m	151 sq ft
Living/Dining/Kitchen	11.9 x 3.3m	39'9" x 10'9"	Living/Dining/Kitchen	8.2 x 4.0m	26'9" x 13'2"
Master Bedroom	4.8 x 3.8m	15'8" x 12'5"	Master Bedroom	5.2 x 2.9m	17'1" x 9'6"
Bedroom 2	5.2 x 2.8m	17' x 9'	Bedroom 2	4.5 x 2.9m	15' x 10'
Bedroom 3	4.0 x 3.0m	13' x 10'	Bedroom 3	4.5 x 2.9m	15' x 9'
APARTMENT 3			2 Bedrooms		
Internal Area	74 sq m	797 sq ft	Internal Area	74 sq m	797 sq ft
Balcony Area	12 sq m	129 sq ft	Balcony Area	12 sq m	129 sq ft
Living/Dining/Kitchen	7.6 x 3.7m	24'8" x 11'1"	Living/Dining/Kitchen	7.6 x 3.7m	24'8" x 11'1"
Master Bedroom	5.4 x 2.8m	17'8" x 9'2"	Master Bedroom	5.4 x 2.8m	17'8" x 9'2"
Bedroom 2	3.5 x 3.2m	12' x 10'	Bedroom 2	3.5 x 3.2m	12' x 10'
APARTMENT 4			2 Bedrooms		
Internal Area	78 sq m	840 sq ft	Internal Area	78 sq m	840 sq ft
Balcony Area	24 sq m	258 sq ft	Balcony Area	24 sq m	258 sq ft
Living/Dining/Kitchen	6.5 x 4.3m	21'2" x 14'2"	Living/Dining/Kitchen	6.5 x 4.3m	21'2" x 14'2"
Master Bedroom	7.0 x 3.2m	23' x 10'3"	Master Bedroom	7.0 x 3.2m	23' x 10'3"
Bedroom 2	4.0 x 2.9m	13' x 10'	Bedroom 2	4.0 x 2.9m	13' x 10'
APARTMENT 5			3 Bedrooms		
Internal Area	95 sq m	1,023 sq ft	Internal Area	95 sq m	1,023 sq ft
Balcony Area	14 sq m	151 sq ft	Balcony Area	14 sq m	151 sq ft
Living/Dining/Kitchen	8.2 x 4.0m	26'9" x 13'2"	Living/Dining/Kitchen	8.2 x 4.0m	26'9" x 13'2"
Master Bedroom	5.2 x 2.9m	17'1" x 9'6"	Master Bedroom	5.2 x 2.9m	17'1" x 9'6"
Bedroom 2	4.5 x 2.9m	15' x 10'	Bedroom 2	4.5 x 2.9m	15' x 10'
Bedroom 3	4.5 x 2.9m	15' x 9'	Bedroom 3	4.5 x 2.9m	15' x 9'

Glasshouse Gardens – East

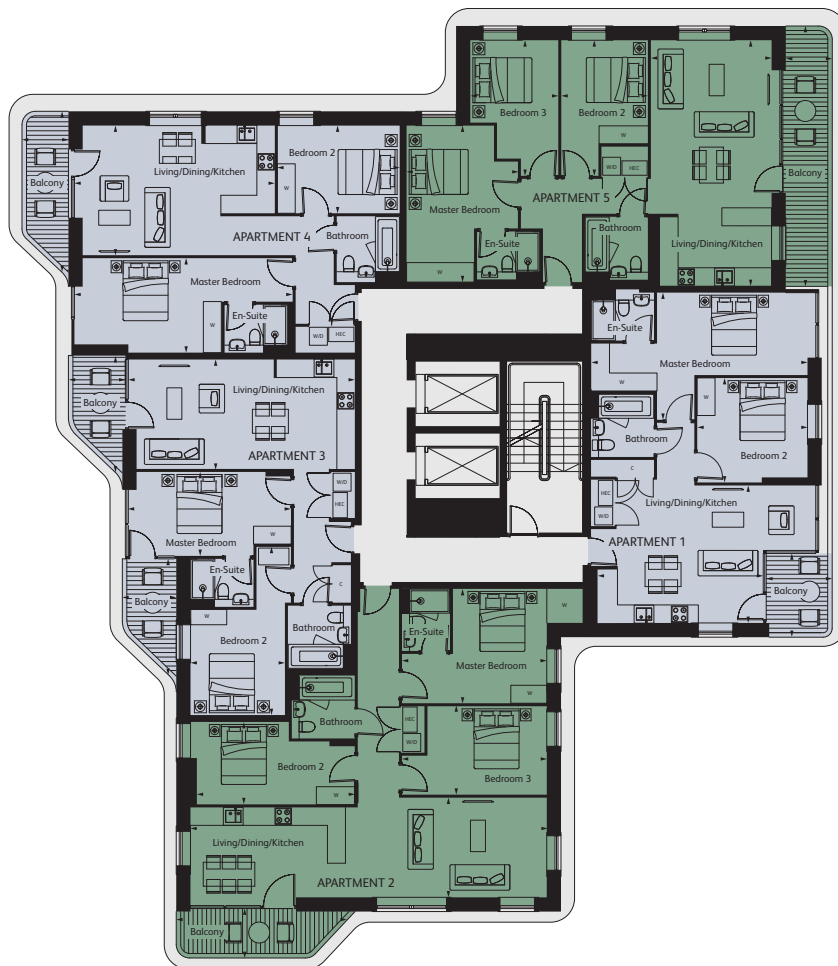
Floor 16



Key

- Wheelchair Adaptable
- Studio
- One Bedroom
- Two Bedrooms
- Three Bedrooms
- Shared Ownership/Equity

- Dimension Indicator
- Fitted Wardrobe
- W/D Washer Dryer
- HEC Heating & Electrical Controls
- C Coat Cupboard
- OW Opening Window



Download and launch the App.

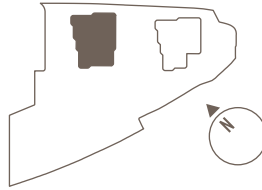
To view an example three bed apartment on this floor in 3D, hold your smart phone or tablet device over this page.



Apartment Details

APARTMENT 1			2 Bedrooms		
Internal Area	78 sq m	840 sq ft	Internal Area	78 sq m	840 sq ft
Balcony Area	6 sq m	65 sq ft	Balcony Area	7 sq m	75 sq ft
Living/Dining/Kitchen	5.5 x 4.8m	17'9" x 15'7"	Living/Dining/Kitchen	6.5 x 4.3m	21'2" x 14'2"
Master Bedroom	7.2 x 2.8m	23'7" x 9'	Master Bedroom	7.0 x 3.2m	23' x 10'3"
Bedroom 2	3.7 x 3.5m	12' x 11'	Bedroom 2	4.0 x 2.9m	13' x 10'
APARTMENT 2			3 Bedrooms		
Internal Area	106 sq m	1,141 sq ft	Internal Area	95 sq m	1,023 sq ft
Balcony Area	8 sq m	86 sq ft	Balcony Area	12 sq m	129 sq ft
Living/Dining/Kitchen	11.9 x 3.3m	39' x 10'9"	Living/Dining/Kitchen	8.2 x 4.0m	26'9" x 13'2"
Master Bedroom	4.8 x 3.8m	15'8" x 12'5"	Master Bedroom	5.2 x 2.9m	17'1" x 9'6"
Bedroom 2	5.2 x 2.8m	17' x 9'	Bedroom 2	4.5 x 2.9m	15' x 10'
Bedroom 3	4.0 x 3.0m	13' x 10'	Bedroom 3	4.5 x 2.9m	15' x 9'
APARTMENT 3			2 Bedrooms		
Internal Area	74 sq m	797 sq ft	Internal Area	74 sq m	797 sq ft
Balcony Area	12 sq m	129 sq ft	Balcony Area	12 sq m	129 sq ft
Living/Dining/Kitchen	7.6 x 3.7m	24'8" x 11'1"	Living/Dining/Kitchen	7.6 x 3.7m	24'8" x 11'1"
Master Bedroom	5.4 x 2.8m	17'8" x 9'2"	Master Bedroom	5.4 x 2.8m	17'8" x 9'2"
Bedroom 2	3.5 x 3.2m	12' x 10'	Bedroom 2	3.5 x 3.2m	12' x 10'
APARTMENT 4			2 Bedrooms		
Internal Area	78 sq m	840 sq ft	Internal Area	78 sq m	840 sq ft
Balcony Area	6 sq m	65 sq ft	Balcony Area	7 sq m	75 sq ft
Living/Dining/Kitchen	5.5 x 4.8m	17'9" x 15'7"	Living/Dining/Kitchen	6.5 x 4.3m	21'2" x 14'2"
Master Bedroom	7.2 x 2.8m	23'7" x 9'	Master Bedroom	7.0 x 3.2m	23' x 10'3"
Bedroom 2	3.7 x 3.5m	12' x 11'	Bedroom 2	4.0 x 2.9m	13' x 10'
APARTMENT 5			3 Bedrooms		
Internal Area	106 sq m	1,141 sq ft	Internal Area	95 sq m	1,023 sq ft
Balcony Area	8 sq m	86 sq ft	Balcony Area	12 sq m	129 sq ft
Living/Dining/Kitchen	11.9 x 3.3m	39' x 10'9"	Living/Dining/Kitchen	8.2 x 4.0m	26'9" x 13'2"
Master Bedroom	4.8 x 3.8m	15'8" x 12'5"	Master Bedroom	5.2 x 2.9m	17'1" x 9'6"
Bedroom 2	5.2 x 2.8m	17' x 9'	Bedroom 2	4.5 x 2.9m	15' x 10'
Bedroom 3	4.0 x 3.0m	13' x 10'	Bedroom 3	4.5 x 2.9m	15' x 9'

Glasshouse Gardens – West Ground Floor



Key

- Wheelchair Adaptable
- Studio
- One Bedroom
- Two Bedrooms
- Three Bedrooms
- Shared Ownership/Equity

- ◀ Dimension Indicator
- W Fitted Wardrobe
- W/D Washer Dryer
- HEC Heating & Electrical Controls
- C Coat Cupboard
- OW Opening Window



Apartment Details

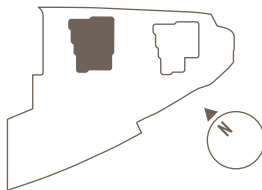
APARTMENT 1		2 Bedrooms
Internal Area	74 sq m	797 sq ft
Garden Area	75 sq m	807 sq ft
Living/Dining/Kitchen	6.3 x 3.8m	20'8" x 12'5"
Master Bedroom	5.0 x 2.8m	16'4" x 9'1"
Bedroom 2	4.5 x 2.8m	15' x 9'

APARTMENT 2		2 Bedrooms
Internal Area	77 sq m	829 sq ft
Garden and Terrace Area	45 sq m	484 sq ft
Living/Dining/Kitchen	6.0 x 4.2m	19'6" x 13'9"
Master Bedroom	5.0 x 3.1m	16'4" x 10'3"
Bedroom 2	3.6 x 3.2m	12' x 11'

This image is for illustrative purposes only.
The full legal disclaimer can be found on the back page of the Glasshouse Gardens floor plan booklet.
DECEMBER 2013.

Glasshouse Gardens – West

First Floor



Key

- Wheelchair Adaptable
- Studio
- One Bedroom
- Two Bedrooms
- Three Bedrooms
- Shared Ownership/Equity

- Dimension Indicator
- W Fitted Wardrobe
- W/D Washer Dryer
- HEC Heating & Electrical Controls
- C Coat Cupboard
- OW Opening Window



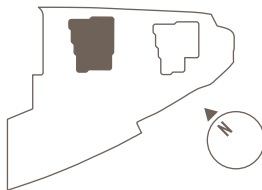
Apartment Details

APARTMENT 1			2 Bedrooms		
Internal Area	73 sq m	786 sq ft	Internal Area	74 sq m	797 sq ft
Balcony Area	20 sq m	215 sq ft	Balcony Area	10 sq m	108 sq ft
Living/Dining/Kitchen	5.4 x 4.8m	17'7" x 15'8"	Living/Dining/Kitchen	6.3 x 3.8m	20'8" x 12'5"
Master Bedroom	3.7 x 2.8m	12'1" x 9'3"	Master Bedroom	5.0 x 2.8m	16'4" x 9'1"
Bedroom 2	4.2 x 3.4m	14' x 11'	Bedroom 2	4.5 x 2.9m	15' x 9'

APARTMENT 2			2 Bedrooms		
Internal Area	66 sq m	710 sq ft	Internal Area	77 sq m	829 sq ft
Balcony Area	12 sq m	129 sq ft	Balcony Area	8 sq m	86 sq ft
Living/Dining/Kitchen	5.3 x 4.6m	17'4" x 15'1"	Living/Dining/Kitchen	6.0 x 4.2m	19'6" x 13'9"
Master Bedroom	5.5 x 2.8m	18' x 9'	Master Bedroom	5.0 x 3.1m	16'4" x 10'3"
Bedroom 2	3.8 x 2.4m	12' x 7'	Bedroom 2	3.6 x 3.2m	12' x 11'

APARTMENT 3			1 Bedroom		
Internal Area	52 sq m	560 sq ft	Internal Area	77 sq m	829 sq ft
Balcony Area	6 sq m	65 sq ft	Balcony Area	8 sq m	86 sq ft
Living/Dining/Kitchen	7.2 x 3.9m	23'5" x 12'7"	Living/Dining/Kitchen	6.0 x 4.2m	19'6" x 13'9"
Bedroom	4.0 x 3.3m	13'2" x 10'8"	Master Bedroom	5.0 x 3.1m	16'4" x 10'3"

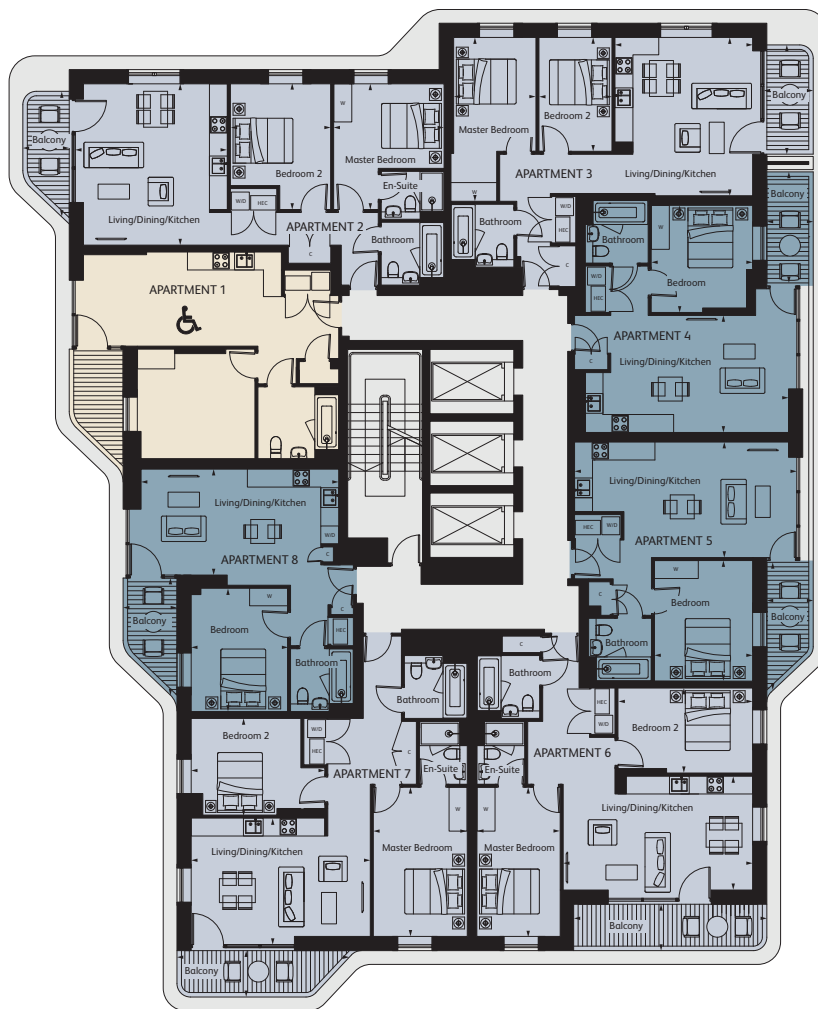
Glasshouse Gardens – West Floors 2-25



Key

- Wheelchair Adaptable
- Studio
- One Bedroom
- Two Bedrooms
- Three Bedrooms
- Shared Ownership/Equity

- Dimension Indicator
- Fitted Wardrobe
- W/D Washer Dryer
- HEC Heating & Electrical Controls
- C Coat Cupboard
- OW Opening Window



Download and launch the App.

To view an example one bed apartment on this floor in 3D, hold your smart phone or tablet device over this page.

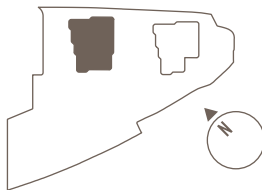


Apartment Details

APARTMENT 1			1 Bedroom	APARTMENT 4			1 Bedroom	APARTMENT 7			2 Bedrooms
Internal Area	51 sq m	549 sq ft		Internal Area	51 sq m	549 sq ft		Internal Area	77 sq m	829 sq ft	
Balcony Area	6 sq m	65 sq ft		Balcony Area	6 sq m	65 sq ft		Balcony Area	8 sq m	86 sq ft	
Living/Dining/Kitchen	6.6 x 3.1m	21'7" x 10'		Living/Dining/Kitchen	6.9 x 3.9m	21'6" x 12'8"		Living/Dining/Kitchen	6.0 x 4.2m	19'6" x 13'9"	
Master Bedroom	3.8 x 3.5m	12'5" x 11'5"		Bedroom	3.6 x 3.4m	11'7" x 11'1"		Master Bedroom	5.0 x 3.1m	16'4" x 10'3"	
								Bedroom 2	3.6 x 3.2m	12' x 11'	
APARTMENT 2			2 Bedrooms	APARTMENT 5			1 Bedroom	APARTMENT 8			1 Bedroom
Internal Area	73 sq m	786 sq ft		Internal Area	52 sq m	560 sq ft		Internal Area	50 sq m	538 sq ft	
Balcony Area	6 sq m	65 sq ft		Balcony Area	6 sq m	65 sq ft		Balcony Area	6 sq m	65 sq ft	
Living/Dining/Kitchen	5.4 x 4.8m	17'7" x 15'8"		Living/Dining/Kitchen	7.2 x 3.9m	23'5" x 12'7"		Living/Dining/Kitchen	6.6 x 3.9m	21'7" x 12'8"	
Master Bedroom	3.7 x 2.8m	12'1" x 9'3"		Bedroom	4.0 x 3.3m	13'2" x 10'8"		Bedroom	4.1 x 3.2m	13'5" x 10'6"	
Bedroom 2	3.4 x 3.4m	11' x 11'									
APARTMENT 3			2 Bedrooms	APARTMENT 6			2 Bedrooms				
Internal Area	66 sq m	710 sq ft		Internal Area	74 sq m	797 sq ft					
Balcony Area	6 sq m	65 sq ft		Balcony Area	10 sq m	108 sq ft					
Living/Dining/Kitchen	5.3 x 4.6m	17'4" x 15'1"		Living/Dining/Kitchen	6.3 x 3.8m	20'8" x 12'5"					
Master Bedroom	5.5 x 2.8m	18' x 9'		Master Bedroom	5.0 x 2.8m	16'4" x 9'1"					
Bedroom 2	3.8 x 2.4m	12' x 8'		Bedroom 2	4.5 x 2.9m	15' x 9'					

This image is for illustrative purposes only.
The full legal disclaimer can be found on the back page of the Glasshouse Gardens floor plan booklet.
DECEMBER 2013.

Glasshouse Gardens – West Floors 26



Key

- Wheelchair Adaptable
- Studio
- One Bedroom
- Two Bedrooms
- Three Bedrooms
- Shared Ownership/Equity

- Dimension Indicator
- Fitted Wardrobe
- W/D Washer Dryer
- HEC Heating & Electrical Controls
- C Coat Cupboard
- OW Opening Window



Download and launch the App.

To view an example two bed apartment on this floor in 3D, hold your smart phone or tablet device over this page.

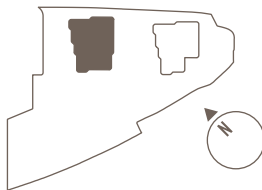


Apartment Details

APARTMENT 1			2 Bedrooms			APARTMENT 4			3 Bedrooms		
Internal Area	76 sq m		818 sq ft			Internal Area	109 sq m		1,173 sq ft		
Balcony Area	25 sq m		269 sq ft			Terrace Area	47 sq m		506 sq ft		
Living/Dining/Kitchen	6.2 x 4.3m		20'2" x 14'2"			Living/Dining/Kitchen	12.3 x 3.5m		40'4" x 11'4"		
Master Bedroom	5.1 x 2.8m		16'8" x 9'1"			Master Bedroom	5.4 x 3.2m		17'6" x 10'5"		
Bedroom 2	4.0 x 3.2m		13' x 11'			Bedroom 2	5.1 x 2.9m		17' x 9'		
						Bedroom 3	5.1 x 2.8m		14' x 9'		
APARTMENT 2			3 Bedrooms			APARTMENT 5			2 Bedrooms		
Internal Area	95 sq m		1,023 sq ft			Internal Area	73 sq m		786 sq ft		
Balcony Area	16 sq m		172 sq ft			Balcony Area	12 sq m		129 sq ft		
Living/Dining/Kitchen	8.3 x 4m		27'2" x 13'2"			Living/Dining/Kitchen	6.7 x 3.5m		22'1" x 11'6"		
Master Bedroom	5.1 x 2.8m		16'7" x 9'0"			Master Bedroom	5.0 x 3.0m		16'3" x 9'7"		
Bedroom 2	4.1 x 2.9m		14' x 9'			Bedroom 2	3.7 x 3.2m		12' x 11'		
Bedroom 3	3.8 x 2.9m		14' x 9'								
APARTMENT 3			2 Bedrooms								
Internal Area	77 sq m		829 sq ft								
Terrace Area	33 sq m		355 sq ft								
Living/Dining/Kitchen	5.6 x 4.3m		18'3" x 14'1"								
Master Bedroom	5.4 x 2.9m		17'6" x 9'5"								
Bedroom 2	3.3 x 3.0m		11' x 10'								

This image is for illustrative purposes only.
The full legal disclaimer can be found on the back page of the Glasshouse Gardens floor plan booklet.
DECEMBER 2013.

Glasshouse Gardens – West Floor 27-29



Key

- Wheelchair Adaptable
- Studio
- One Bedroom
- Two Bedrooms
- Three Bedrooms
- Shared Ownership/Equity

- Dimension Indicator
- Fitted Wardrobe
- W/D Washer Dryer
- HEC Heating & Electrical Controls
- C Coat Cupboard
- OW Opening Window



Download and launch the App.

To view an example three bed apartment on this floor in 3D, hold your smart phone or tablet device over this page.



Apartment Details

APARTMENT 1			2 Bedrooms		
Internal Area	76 sq m	818 sq ft	Internal Area	109 sq m	1,173 sq ft
Balcony Area	6 sq m	65 sq ft	Balcony Area	8 sq m	86 sq ft
Living/Dining/Kitchen	6.2 x 4.3m	20'2" x 14'2"	Living/Dining/Kitchen	12.3 x 3.5m	40'4" x 11'4"
Master Bedroom	5.1 x 2.8m	16'8" x 9'1"	Master Bedroom	5.4 x 3.2m	18'5" x 10'5"
Bedroom 2	4.0 x 3.2m	13' x 11'	Bedroom 2	5.1 x 2.9m	17' x 9'
			Bedroom 3	5.1 x 2.8m	14' x 9'
APARTMENT 2			3 Bedrooms		
Internal Area	95 sq m	1,023 sq ft	Internal Area	73 sq m	786 sq ft
Balcony Area	12 sq m	129 sq ft	Balcony Area	12 sq m	129 sq ft
Living/Dining/Kitchen	8.3 x 4m	27'2" x 13'2"	Living/Dining/Kitchen	6.7 x 3.5m	22'1" x 11'6"
Master Bedroom	5.1 x 2.8m	16'7" x 9'	Master Bedroom	5.0 x 3.0m	16'3" x 9'7"
Bedroom 2	4.1 x 2.9m	14' x 9'	Bedroom 2	3.7 x 3.2m	12' x 11'
Bedroom 3	3.8 x 2.9m	12' x 9'			
APARTMENT 3			2 Bedrooms		
Internal Area	77 sq m	829 sq ft			
Balcony Area	6 sq m	65 sq ft			
Living/Dining/Kitchen	5.6 x 4.3m	18'3" x 14'1"			
Master Bedroom	5.4 x 2.9m	17'6" x 9'5"			
Bedroom 2	3.3 x 3.0m	11' x 10'			
APARTMENT 4			3 Bedrooms		
Internal Area	76 sq m	818 sq ft	Internal Area	109 sq m	1,173 sq ft
Balcony Area	6 sq m	65 sq ft	Balcony Area	8 sq m	86 sq ft
Living/Dining/Kitchen	6.2 x 4.3m	20'2" x 14'2"	Living/Dining/Kitchen	12.3 x 3.5m	40'4" x 11'4"
Master Bedroom	5.1 x 2.8m	16'8" x 9'1"	Master Bedroom	5.4 x 3.2m	18'5" x 10'5"
Bedroom 2	4.0 x 3.2m	13' x 11'	Bedroom 2	5.1 x 2.9m	17' x 9'
			Bedroom 3	5.1 x 2.8m	14' x 9'
APARTMENT 5			2 Bedrooms		
Internal Area	73 sq m	786 sq ft	Internal Area	73 sq m	786 sq ft
Balcony Area	12 sq m	129 sq ft	Balcony Area	12 sq m	129 sq ft
Living/Dining/Kitchen	6.7 x 3.5m	22'1" x 11'6"	Living/Dining/Kitchen	6.7 x 3.5m	22'1" x 11'6"
Master Bedroom	5.0 x 3.0m	16'3" x 9'7"	Master Bedroom	5.0 x 3.0m	16'3" x 9'7"
Bedroom 2	3.7 x 3.2m	12' x 11'	Bedroom 2	3.7 x 3.2m	12' x 11'

Stunning Interiors

Interior Finishes

- Engineered timber flooring to hallway, master bedroom, kitchen and living room
- Two colour palette options available
- Carpet to second and third bedrooms
- Painted plasterboard ceilings
- Painted walls
- Painted solid core doors
- Contemporary high quality ironmongery
- Painted skirtings and architraves
- Built-in utility cupboards
- Built-in coat cupboards (generally as indicated on plan)
- Built-in wardrobe to master bedrooms
- Double glazed windows with casement doors to balconies, terraces and gardens

Kitchens

- Bespoke contemporary kitchen with handle-less doors
- Composite stone worktop
- One and half size under-mounted stainless steel sink with chrome mixer tap
- All appliances Bosch (or similar)
- Stainless steel fronted single oven
- Induction hob with integrated recirculation fan above
- Integrated full-height fridge/freezer
- Integrated stainless steel microwave oven (except in studio apartments)
- Integrated multi-function dishwasher
- Space saving waste and recycling bins

Bathrooms / En-suites

- Sanitary ware generally as indicated on plan
- White bath with bath panel
- White shower tray with glass screen
- Chrome thermostatic bath/shower mixer with shower head

- White semi-recessed basin with chrome monoblock mixer tap
- White dual flush floor mounted WC with concealed cistern
- Large format contemporary wall and floor tiling
- Fitted storage cabinet with mirrored door and side shelves above composite stone shelf
- Chrome towel rail to bathrooms and en-suites

Balconies / Terraces

- Well-proportioned balconies and terraces with glass and metal balustrades
- Decking finish on terraces and balconies
- External light to balconies and terraces

Gardens

(Ground Floor Apartments Only)

- Well-proportioned front gardens with paving
- External light and water point to gardens
- Planted hedge to front gardens

Heating

- Combined Heat and Power system providing individually metered heat and hot water to each home
- Underfloor heating to living rooms, bathrooms and bedrooms
- Individual thermostatic temperature controls in all main rooms

Building Fabric

- Reinforced concrete frame and slabs on piled foundations
- Architectural cladding with high performance window system

- Soundproofing of walls and floors separating homes to outperform current Building Regulations
- Environmentally friendly 'Green' roofs

Electrical Fittings

- Energy efficient recessed ceiling downlighters throughout
- 5amp lighting circuit in living area and master bedroom
- Television (terrestrial and Sky+) points to living room and master bedroom
- Superfast fibre to the home broadband
- Condensing washer/dryer in utility cupboard (except apartments East Tower, floors 2-14, apartment 3)
- Contemporary white switch plates and sockets
- Mechanical ventilation to outside with heat recovery
- Task lighting to underside of kitchen wall units
- Task lighting to underside and top of bathroom cabinets
- Shaver socket integrated in bathroom cabinets

Management and Security

- Development designed in consultation with 'Secure by Design' officer
- 24hr Central Concierge service on completion of both towers
- Electronic access to internal communal areas and each floor
- CCTV system in public realm and building entrances
- Multi-locking point locking system to front door to each home
- Audio visual door entry system to each home

- Interconnected mains supply smoke/heat detection system with battery back-up to each home
- 10 year NHBC warranty to each home

Communal Areas

- Main lobby with feature finishes
- Residents gym
- Residents communal room with kitchenette and communal terrace
- Passenger lifts and stair access from all levels
- Carpeted floors and painted or wallpapered walls to upper level communal corridors
- Ground floor refuse /recycling store
- Ground floor post room, chilled stored room for grocery deliveries

External Communal Areas

- Landscaped gardens including new play area and host space for events
- Landscaped entrance and central courtyard
- First floor communal terrace

Transport

- Cycle space for every home in lockable communal areas
- Car and motorcycle parking spaces available to purchase with selected homes
- Electric vehicle charging points
- Car club facilities available

Apartment Finishes



Computer generated imagery.

For a more luxurious home our premium interiors include:*

Premium Interior Finishes

- Three colour palette options
- Built in wardrobes to Master and second bedrooms

Premium Kitchens

- Stainless steel wine fridge
- All appliances Siemens (or similar)

Premium Bathrooms/En-suites

- All walls fully tiled with large format tiles

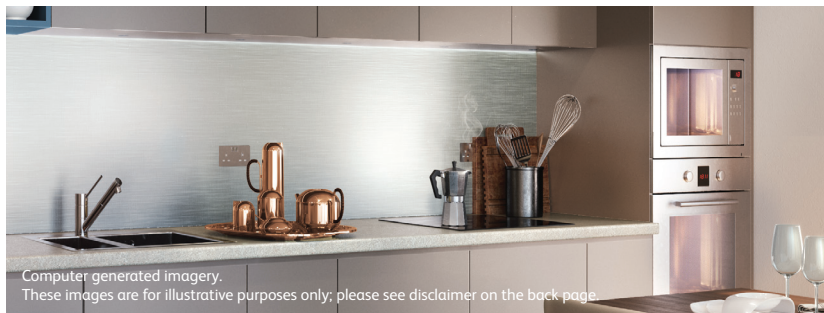
Premium Heating & Cooling

- Comfort cooling to principle rooms (floors 26 -29)

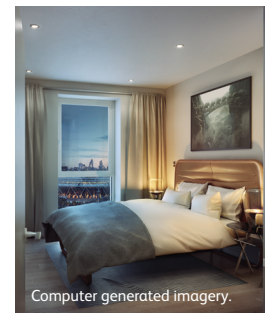
*Premium levels 15-16 in East Tower and 26-29 in West Tower



Computer generated imagery.



Computer generated imagery.
These images are for illustrative purposes only; please see disclaimer on the back page.



Computer generated imagery.



Computer generated imagery.
These images are for illustrative purposes only; please see disclaimer on the back page.

Development Team

Lend Lease

At Lend Lease, our vision is ‘to create the best places’.

Lend Lease has an unparalleled track record in creating sustainable new neighbourhoods. We also have a reputation for successfully turning areas in need of investment and regeneration into flourishing urban quarters around the world.

We work with communities, clients and partners to create positive legacies – from funding projects right through to developing and constructing state-of-the-art buildings and infrastructure, including large scale health facilities, street networks, roads and bridges.

We also have a strong track record in creating lively, sustainable residential communities, productive workplaces and retail destinations. In short, places where people want to live, work and visit.

Our commitment to sustainability is shown in projects such as the East Village in London, and JemTM in Singapore, both of which won recognition for their sustainable design and innovative construction.

It’s about creating healthier environments, exceptional design, stronger communities, a sense of belonging and an improved way.

LCR

LCR is a UK Government-owned company whose primary focus is the important regeneration projects at King’s Cross, in partnership with Argent and DHL, and The International Quarter, Stratford London in partnership with Lend Lease, and a range of other property interests alongside the award-winning High Speed 1 (HS1) route.

The King’s Cross and Stratford schemes represent over 100 acres of development on strategically important brown field land, delivering thriving new office districts, homes and £billions of investment to the capital.

In 2010, LCR sold HS1 with its 30 year concession for the track and stations to a consortium comprising Borealis Infrastructure and the Ontario Teachers’ Pension Plan for £2.1 billion. LCR retains a 40% stake in Eurostar International Ltd.



Find out more

Whether you're looking for a new home to live in or invest in, or both, for more information about Glasshouse Gardens, please contact:

Phone: 020 3002 6787

Email: ghgstratford@lendlease.com

***Please register your interest at:
ghgstratford.com***



Disclaimer

The information in this document is indicative and is intended to act as a guide only as to the finished product. All images and animations used are for illustrative purposes only. Furniture and landscaping are also shown for illustrative purposes only. Detail design of facades and landscaping are subject to planning agreement and it is anticipated that there will be changes in landscape design. Individual features such as windows, brick and other materials' colours may vary, as may heating and electrical layouts. The information in this brochure should not be relied upon as accurately describing any of the specific matters under the Property Misdescriptions Act 1991. This information including images, animations and dimensions is not intended to form part of or constitute a contract or warranty. All dimensions given on plans are approximate and subject to variations and should not be relied on particularly for carpet sizes, appliance sizes or items of furniture. The information provided in this document is as at December 2013 and is subject to change.

ghgstratford.com

A DEVELOPMENT BY

