



Park Road, Lowestoft NR32 1SP

welcome to

Park Road, Lowestoft

A spacious and well-presented two-bedroom home in North Lowestoft, offering a large lounge, extensive kitchen, ground-floor bathroom and low-maintenance rear garden. Ideal for first-time buyers or investors, and situated close to shops, schools and transport links.

Lounge

20' 5" x 9' 7" (6.22m x 2.92m)

Double glazed front door. Double glazed window to front and side. Carpet flooring. Built in electrics cupboard. Radiator. Tv and power points.

Low maintenance garden with patio and stones surrounding. Side gate with fencing surround.

Kitchen

11' 9" x 9' 1" (3.58m x 2.77m)

Double glazed window to side. Hallway to bathroom. Tiled flooring and part tiled walls. Fitted units and worktops. Sink and drainer. Plumbing for washing machine. Space for 50/50 fridge freezer. Power points. Radiator.

Landing

Carpeted landing and stairs. Loft hatch. Access to bedroom one and dressing room.

Bedroom 1

10' 4" x 9' 9" (3.15m x 2.97m)

Double glazed window to front. Carpet flooring. Radiator. Power points. Double bedroom.

Bedroom 2

11' 2" x 9' 1" (3.40m x 2.77m)

Double glazed window to rear. Carpet flooring. Radiator. Power points. Double bedroom.

Dressing Room

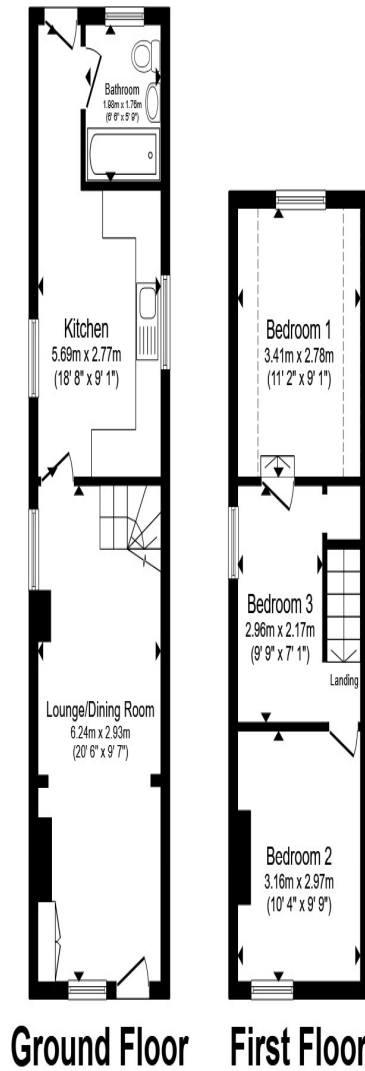
9' 9" x 7' 11" (2.97m x 2.41m)

Double glazed window to side. Carpet flooring. Radiator. Power points.

Bathroom

Double glazed window to rear. Laminate wood effect flooring. Part tiled walls. Wc and washbasin. Bathtub with overhead shower. Radiator.

Rear Garden



Total floor area 63.8 m² (686 sq.ft.) approx

This floor plan is for illustrative purposes only. It is not drawn to scale. Any measurements, floor areas (including any total floor area), openings and orientation are approximate. No details are guaranteed, they cannot be relied upon for any purpose and they do not form part of any agreement. No liability is taken for any error, omission or misstatement. A party must rely upon its own inspection(s). Powered by www.propertybox.io



welcome to
Park Road,
Lowestoft

- IMPRESSIVE 20FT LOUNGE
- BRIGHT KITCHEN WITH EXCELLENT STORAGE AND WORKSPACE
- WELL-PROPORTIONED BEDROOMS ACROSS THE FIRST FLOOR
- STYLISH GROUND-FLOOR BATHROOM
- ENCLOSED REAR COURTYARD GARDEN WITH GATED ACCESS

Tenure: Freehold EPC Rating: D
Council Tax Band: A

£120,000



view this property online williamhbrown.co.uk/Property/LOW109498



Property Ref:
LOW109498 - 0004

1. MONEY LAUNDERING REGULATIONS Intending purchasers will be asked to produce identification documentation at a later stage and we would ask for your co-operation in order that there is no delay in agreeing the sale. 2. These particulars do not constitute part or all of an offer or contract. 3. The measurements indicated are supplied for guidance only and as such must be considered incorrect. Potential buyers are advised to recheck measurements before committing to any expense. 4. We have not tested any apparatus, equipment, fixtures or services and it is in the buyers interest to check the working condition of any appliances. 5. Where an EPC, or a Home Report (Scotland only) is held for this property, it is available for inspection at the branch by appointment. If you require a printed version of a Home Report, you will need to pay a reasonable production charge reflecting printing and other costs. 6. We are not able to offer an opinion either written or verbal on the content of these reports and this must be obtained from your legal representative. 7. Whilst we take care in preparing these reports, a buyer should ensure that his/her legal representative confirms as soon as possible all matters relating to title including the extent and boundaries of the property and other important matters before exchange of contracts.

William H Brown is a trading name of Sequence (UK) Limited which is registered in England and Wales under company number 4268443, Registered Office is Cumbria House, 16-20 Hockliffe Street, Leighton Buzzard, Bedfordshire, LU7 1GN. VAT Registration Number is 500 2481 05.



william h brown



01502 585998



Lowestoft@williamhbrown.co.uk



138 London Road North, LOWESTOFT, Suffolk,
NR32 1HB



williamhbrown.co.uk