



5 Saw Mills, Flixton Hall Estate Bungay NR35 1NP

welcome to

5 Saw Mills, Flixton Hall Estate Bungay

We are delighted to present this charming FOUR bedroom Link-Detached Family home. The property is situated in a delightful rural setting, with front garden views and spacious living throughout. Boasting a country style Kitchen, Lounge/diner and Separate snug - viewings highly recommended!

Accommodation

Ground Floor

Entrance Hall

Access to Reception rooms and Downstairs WC, Coat storage, Tiled flooring.

Downstairs Wc

Partially tiled walls, Toilet, Wash hand basin, Extractor fan, Tiled flooring.

Lounge/ Diner

28' 5" x 16' 4" (8.66m x 4.98m)

Double glazed window to Front and Side aspects, Double glazed Patio doors leading out to Rear and Side Gardens, Open plan Lounge/Diner with Dual aspect fireplace with Log Burner, Stairs leading to First floor landing, Wall lights, Two radiators, Power points, Servers Hatch, Laminate wood effect flooring.

Snug

13' 2" x 9' (4.01m x 2.74m)

Door leading to Utility room, Built in storage, Radiator, Power points, Laminate wood effect flooring.

Kitchen

12' 4" x 11' 3" (3.76m x 3.43m)

Double glazed window to Rear aspect, Fitted Kitchen wall and base units, Partially tiled walls, Mixture of Wooden and Quartz work surfaces, Built in Breakfast bar with integrated Wine wrack, Butlers sink, Servers hatch to Lounge/Diner, Space for Double Gas Oven,

Integrated Fridge/Freezer and dishwasher, Spotlights, Fashion Radiator, Power points, Tiled flooring.

Utility Room

7' 7" x 7' 4" (2.31m x 2.24m)

Double doors to Driveway, Fitted units and work tops with space for appliances.





First Floor

Landing

Access to all bedrooms and family bathroom, Built in airing cupboard, Loft hatch, Radiator, Carpeted stairs and landing area.

Bedroom 1

15' 1" x 12' 5" (4.60m x 3.78m)
Two double glazed Velux windows, Double bedroom, Access to En Suite, Fitted wardrobes, Radiator, Power points, Carpet flooring.

En Suite

Original window to Side aspect, Jack and Jill doors to landing, Partially tiled walls, Toilet, Wash hand basin, Bath tub with over head rainfall shower, Lino tile effect flooring.

Bedroom 2

13' 6" x 10' 7" (4.11m x 3.23m)
Two double glazed Velux windows to Rear aspect, Double bedroom, Power points, Radiator, Carpet flooring.

Bedroom 3

11' 8" x 7' 7" (3.56m x 2.31m)
Two double glazed Velux windows, Double bedroom, Built in wardrobe, Power points, Radiator, Carpet flooring.

Bedroom 4

12' 7" x 9' 2" (3.84m x 2.79m)
Double glazed Velux window, Double bedroom, Built in Wardrobe/Storage, Power points, Radiator, Carpet flooring.

Bathroom

Jack and Jill doors to Bedroom, Toilet, Wash hand basin, Walk in shower with rainfall shower head, Shaving point, Towel radiator, Lino tile effect flooring.

Outside

Front Garden

Gated access to gravel driveway with fencing, Grass to side aspect, Shrubbery surround, Field Views to the Front aspect.

Rear Garden

Concrete patio for outdoor seating with shrubbery to Side aspect, Timber shed to Rear with wood storage area, Gated access to Front garden.

Council Tax Band: D

Agents Note

"Under the terms of the Estate Agency Act 1979 (section 21) please note that the Vendor of this property is a relative of a staff member of the Connells Group".



view this property online williamhbrown.co.uk/Property/LOW108221



welcome to

5 Saw Mills, Flixton Hall Estate Bungay

- Four Bedroom Link Detached Family Home
- Gravel Driveway For Multiple Vehicles
- ** Open House on Sunday 19th May by appointment only
- **
- Country Style Kitchen with Butler Sink and Breakfast Bar
- Spacious Open Plan Lounge/Diner with Dual Aspect Fireplace
- Downstairs WC, Snug and Utility Room
- Master En Suite and Separate Family Bathroom
- Rear Courtyard Garden and Front Garden with Field Views

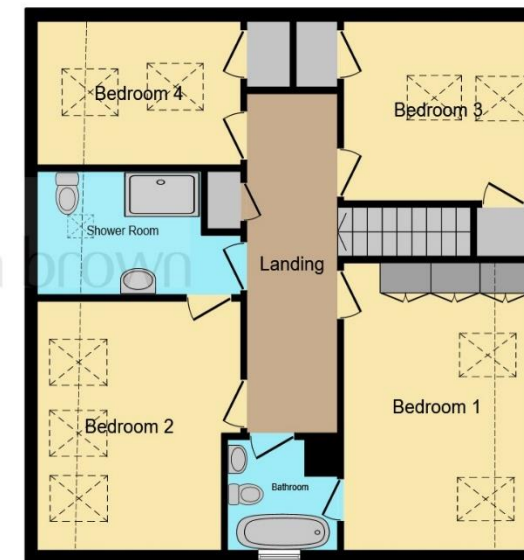
Tenure: Freehold EPC Rating: Awaited

offers in the region of

£465.000



Ground Floor



First Floor

This floor plan is for illustrative purposes only. It is not drawn to scale. Any measurements, floor areas (including any total floor area), openings and orientation are approximate. No details are guaranteed, they cannot be relied upon for any purpose and they do not form part of any agreement. No liability is taken for any error, omission or misstatement. A party must rely upon its own inspection(s). Powered by www.focalagent.com

view this property online williamhbrown.co.uk/Property/LOW108221



Property Ref:
LOW108221 - 0005

1. MONEY LAUNDERING REGULATIONS Intending purchasers will be asked to produce identification documentation at a later stage and we would ask for your co-operation in order that there is no delay in agreeing the sale. 2. These particulars do not constitute part or all of an offer or contract. 3. The measurements indicated are supplied for guidance only and as such must be considered incorrect. Potential buyers are advised to recheck measurements before committing to any expense. 4. We have not tested any apparatus, equipment, fixtures or services and it is in the buyers interest to check the working condition of any appliances. 5. Where an EPC, or a Home Report (Scotland only) is held for this property, it is available for inspection at the branch by appointment. If you require a printed version of a Home Report, you will need to pay a reasonable production charge reflecting printing and other costs. 6. We are not able to offer an opinion either written or verbal on the content of these reports and this must be obtained from your legal representative. 7. Whilst we take care in preparing these reports, a buyer should ensure that his/her legal representative confirms as soon as possible all matters relating to title including the extent and boundaries of the property and other important matters before exchange of contracts.

William H Brown is a trading name of Sequence (UK) Limited which is registered in England and Wales under company number 4268443, Registered Office is Cumbria House, 16-20 Hockliffe Street, Leighton Buzzard, Bedfordshire, LU7 1GN. VAT Registration Number is 500 2481 05.


william h brown



01502 585998



Lowestoft@williamhbrown.co.uk



138 London Road North, LOWESTOFT, Suffolk,
NR32 1HB



williamhbrown.co.uk