



25 Margesson Drive, Barnt Green, B45 8LR

£575,000

🛏 4 🚿 2 🛋 1



Description

From the moment you step through the door, you are greeted with an impressive sense of space and light, complemented by sleek black glazed internal doors, setting the tone for the modern sophistication that flows throughout the property. A key feature of the entrance hall is the bespoke built-in understairs storage cupboards, providing a seamless and elegant solution for keeping the space organised and clutter-free. Off the hallway, you'll find a guest WC as well as a utility room with a roof window.

The state of the art kitchen boasts high quality BOSCH appliances (including an electric hob with downdraft extractor), Belfast sink, elegant quartz countertops and breakfast bar, making it as functional as it is beautiful.

The adjoining open plan living/dining room features views of the garden and a set of French doors to the patio.

The accommodation boasts a cleverly designed layout that cohesively links, offering a sense of continuity and ease of movement throughout the ground floor (which is equipped with wet underfloor heating).

The highlight is the master bedroom, which now boasts the addition of a contemporary en suite shower room with premium fittings. Alongside the master suite are three additional well-proportioned bedrooms, each offering ample space and flexibility to suit a variety of needs, from guest rooms to home offices or children's bedrooms. Completing the first floor is an impressive family bathroom, designed with both functionality and luxury in mind.

While the entire home has been refurbished throughout, the upstairs flooring has been left unfinished, allowing the new owner to select and install their preferred flooring.





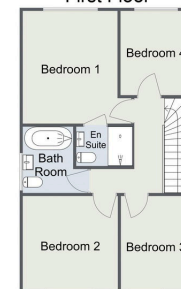
- Meticulously Refurbished to an Exceptional Standard
- Open Plan Living/Dining Room with Garden Views
- Master Bedroom with En Suite
- Impressive Family Bathroom
- Driveway and Storage
- State of the Art Breakfast Kitchen
- Guest WC and Utility
- Three Additional Well Proportioned Bedrooms
- South Westerly Rear Garden
- Within Walking Distance to Barnt Green Amenities



Margesson Drive, Barnt Green
Ground Floor



First Floor



Total Approximate Area: 114.8 sq m (1,235.69 sq. ft)
For illustrative purposes only. Decorative finishes, fixtures & fittings do not represent the current state of the property. Measurements are approximate & not to scale. Floor Plans made using RoomSketcher.

For more information on this house or to arrange a viewing please call the office on:

0121 447 8300

Alternatively, you can scan the QR to view all of the details of this property online.



arden
ESTATE AGENTS