



**Price**  
**£360,000**

**Freehold**

3x  2x  1x 

**Cranworth Road,  
Worthing, West Sussex,  
BN11**

**OVER 60?**

You could get up to  
**59% off** the price!\*



**Video Tour available**

**cubitt&west**  
Helping you move forwards





## Main features

- Extended older style terraced house situated close to the town centre and seafront
- Wide selection of Primary and Secondary schools within 1 mile
- Cloakroom
- Utility room/home office
- Bedroom with an En-suite and Juliette balcony

## Accommodation

### GROUND FLOOR

#### Hallway

**Lounge/Diner:** 23'9 x 9'9 (7.24m x 2.97m)

**Kitchen:** 13'1 x 7'4 (3.99m x 2.24m)

**Utility Room/Study:** 8'9 x 4'8 (2.67m x 1.42m)

**Downstairs WC**

### FIRST FLOOR

#### Landing

**Bedroom 1:** 13'2 x 11'8 (4.02m x 3.56m)

**Bedroom 2:** 11'7 x 8'3 (3.53m x 2.52m)

**Family Bathroom**

### SECOND FLOOR

#### Landing

**Bedroom 3:** 19'2 x 8'4 (5.85m x 2.54m)

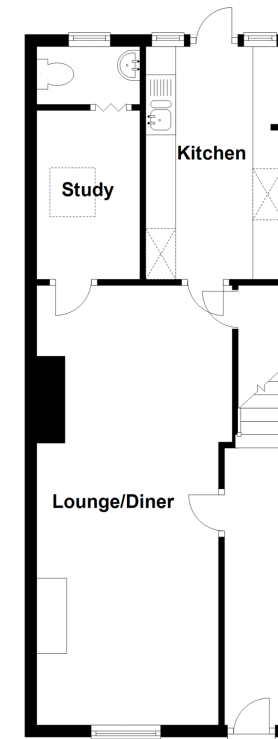
**En-Suite Shower Room**

### OUTSIDE

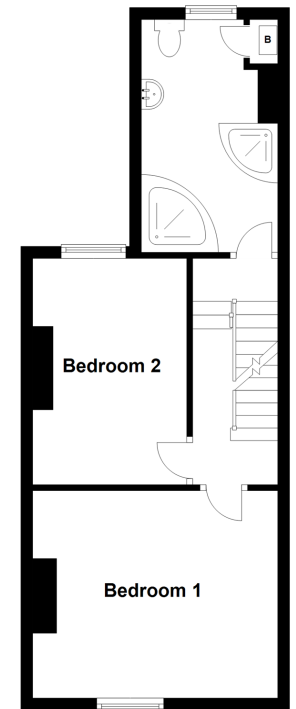
**Enclosed Rear Garden**

**Private Front Garden**

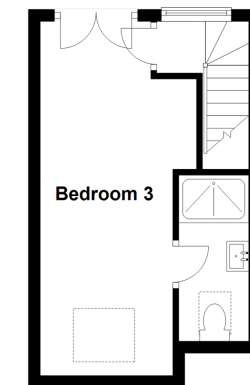
**Ground Floor**  
Approx. 46.5 sq. metres (501.0 sq. feet)



**Split Level First Floor**  
Approx. 39.3 sq. metres (422.7 sq. feet)



**Second Floor**  
Approx. 19.9 sq. metres (214.7 sq. feet)



**Call West Worthing - 01903 700657 ■ [cubittandwest.co.uk](http://cubittandwest.co.uk)**

- Legal advice should be taken to verify fixtures/fittings, planning, alterations and/or lease details
- Appliances & services are untested, dimensions are approximate and floor plans are not to scale
- Our Homewise partnership offer a 'Home for Life' plan to buyers over 60, granting a lifetime lease for your protection and reducing the purchase price by up to 59%



40902667/20210602/SB/JS