



**Modern  
Auction**

**£180,000  
Leasehold**

2x  1x  1x 

**Dorchester Gardens,  
Worthing, West Sussex,  
BN11**

**cubitt&west**  
Helping you move forwards





## Main features

- A purpose built ground floor flat
- For sale by Modern Auction
- T&C's apply
- Subject to an undisclosed reserve price
- Buyers fees apply
- Great area for transport links and local amenities
- No chain

## Accommodation

### GROUND FLOOR

Hallway

Lounge: 17'8 x 11'9 (5.39m x 3.58m)

Door To Patio Area

Kitchen : 14'1 x 7'0 (4.30m x 2.14m)

Bedroom 1: 11'9 x 11'9 (3.58m x 3.58m)

Bedroom 2: 11'8 x 9'3 (3.56m x 2.82m)

Bathroom

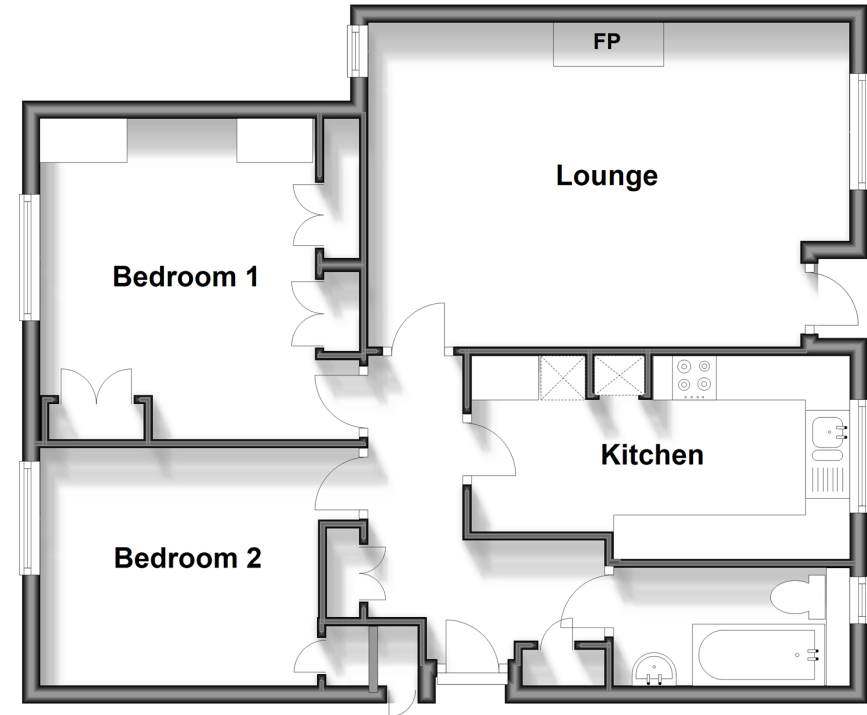
### OUTSIDE

Communal Gardens

Garage In Compound

## Ground Floor

Approx. 64.0 sq. metres (688.8 sq. feet)



**Call West Worthing - 01903 700657 ■ [cubittandwest.co.uk](http://cubittandwest.co.uk)**

- A private rental licensing scheme applies to some properties in this area, please contact us before proceeding
- Legal advice should be taken to verify fixtures/fittings, planning, alterations and/or lease details
- Appliances & services are untested, dimensions are approximate and floor plans are not to scale



40903471/20250221/LB/JS