



**Guide Price**  
**£285,000**

**Leasehold**

3x  1x  1x 

**Gloucester Court,  
George V Avenue,  
Worthing, West Sussex,  
BN11**

**cubitt & west**  
Helping you move forwards





## Main features

- Fantastic apartment with sea views
- Close to West Worthing Shopping Parade
- Light and spacious accommodation
- Benefits by having lovely communal gardens and a garage
- Sunny Balcony

## Accommodation

### FIRST FLOOR

Entrance Hallway

Lounge/Dining Room: 17'9 x 15'9 (5.41m x 4.80m)

Sun Balcony

Kitchen : 10'6 x 7'5 (3.20m x 2.26m)

Bedroom 1: 16'0 up to fitted wardrobes x 11'9 (4.88m x 3.58m)

Bedroom 2: 11'2 x 8'9 (3.41m x 2.67m)

Bedroom 3: 13'6 x 8'9 (4.12m x 2.67m)

Bathroom

Separate WC

### OUTSIDE

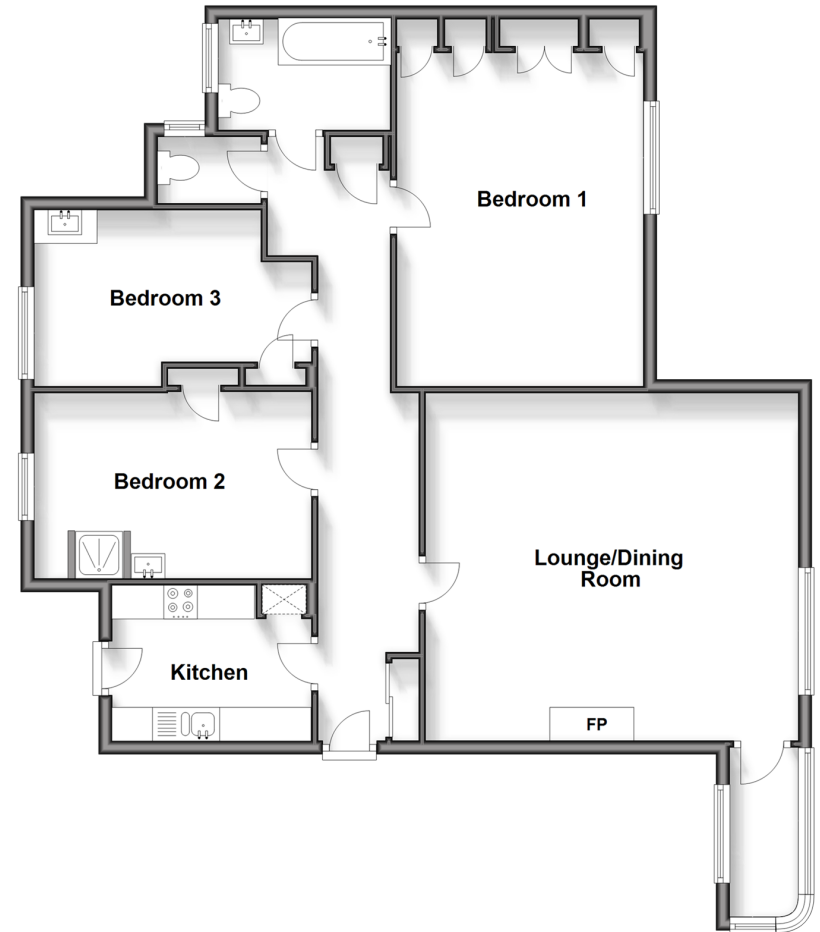
Communal Gardens

Garage

Call West Worthing - 01903 700657 ■ [cubittandwest.co.uk](http://cubittandwest.co.uk)

- Legal advice should be taken to verify fixtures/fittings, planning, alterations and/or lease details
- Appliances & services are untested, dimensions are approximate and floor plans are not to scale

**First Floor**  
Approx. 102.4 sq. metres (1102.0 sq. feet)



40903420/20240916/TD/JS