



Price
£425,000

Freehold

3x  1x  1x 

**South Farm Road,
Worthing, West Sussex,
BN14**

cubitt & west
Helping you move forwards



Main features

- Older style home with charm and character
- Light and spacious rooms
- Good decorative order throughout
- Modern bathroom
- Enclosed rear garden
- Double garage
- Great transport links nearby both bus and rail

Accommodation

GROUND FLOOR

Hallway

Lounge : 12'1 x 11'8 (3.69m x 3.56m)

Dining Area : 12'4 x 10'4 (3.76m x 3.15m)

Kitchen : 16'7 x 7'8 (5.06m x 2.34m)

FIRST FLOOR

Landing

Bedroom 1 : 12'1 x 11'8 (3.69m x 3.56m)

Bedroom 2 : 12'0 x 10'4 (3.66m x 3.15m)

Bedroom 3 : 8'4 x 6'2 (2.54m x 1.88m)

Bathroom

OUTSIDE

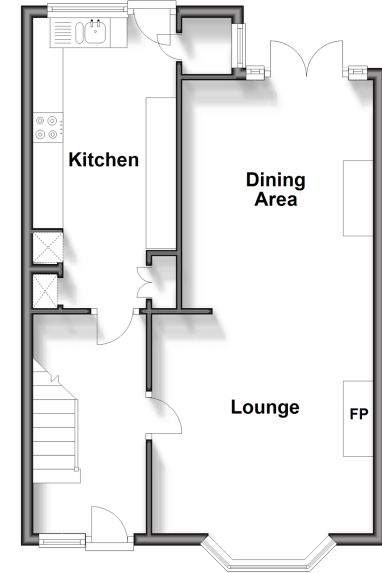
Enclosed Rear Garden

Front Garden

Service Road To Double Garage: 20'3 x 17'8
(6.18m x 5.39m)

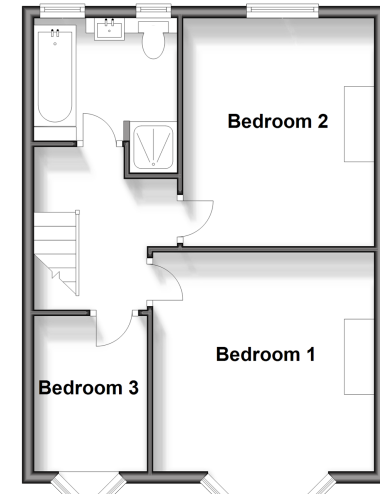
Ground Floor

Approx. 46.3 sq. metres (498.4 sq. feet)



First Floor

Approx. 42.9 sq. metres (462.2 sq. feet)



Call West Worthing - 01903 700657 ■ cubittandwest.co.uk

- Legal advice should be taken to verify fixtures/fittings, planning, alterations and/or lease details
- Appliances & services are untested, dimensions are approximate and floor plans are not to scale



40903405/20240605/JS/JS