



Price
£550,000

Freehold

4x  1x  2x 

**Sea Close,
Goring-By-Sea,
Worthing, West Sussex,
BN12**

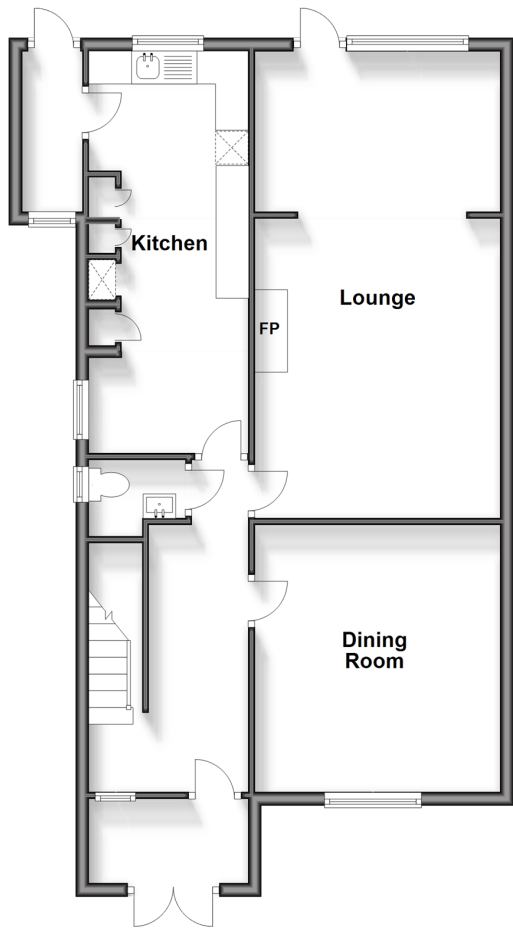
OVER 60?

Secure this property
for up to **59% less!**

cubitt & west
Helping you move forwards

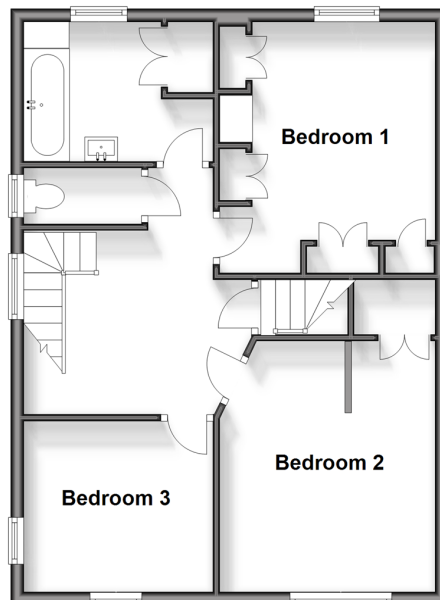
Ground Floor

Approx. 76.6 sq. metres (824.6 sq. feet)



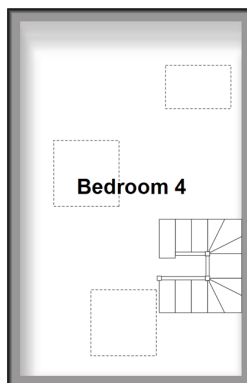
First Floor

Approx. 54.5 sq. metres (586.2 sq. feet)



Second Floor

Approx. 18.2 sq. metres (196.0 sq. feet)



Accommodation

GROUND FLOOR

Lounge: 24'0 x 12'2 (7.32m x 3.71m)
Dining Room: 13'1 x 12'1 (3.99m x 3.69m)
Kitchen: 18'10 x 7'10 (5.74m x 2.39m)
Utility Room
WC

FIRST FLOOR

Landing
Bedroom 1: 14'5 x 12'0 (4.40m x 3.66m)
Bedroom 2: 13'0 x 12'1 (3.97m x 3.69m)
Bedroom 3: 9'9 x 8'5 (2.97m x 2.57m)
Bathroom
WC

SECOND FLOOR

Bedroom 4: 17'0 x 11'1 (5.19m x 3.38m)

OUTSIDE

Front & Rear Gardens
Driveway & Off Road Parking



Main features

- Light and spacious property set in a lovely quiet cul-de-sac
- Good decorative order throughout
- Sunny rear garden
- Close to shops and cafes
- Good school catchment area
- Excellent transport links nearby including bus and rail



Nearest Schools

Primary Schools: West Park CofE First and Middle (Controlled) 0.3 miles, The Orchards Community Middle School 0.7 miles, English Martyrs Catholic Primary, Worthing 1.0 miles.



Transport Information

Train Stations: Durrington-on-Sea 0.4 miles, West Worthing 0.7 miles, Goring-by-Sea 1.2 miles



Address

Sea Close, Goring-By-Sea, Worthing, West Sussex, BN12



Directions

For directions to this property please contact us.



cubitt&west
Helping you move forwards

Call West Worthing Branch 01903 700657 ■ cubittandwest.co.uk



- Legal advice should be taken to verify fixtures/fittings, planning, alterations and/or lease details
- Appliances & services are untested, dimensions are approximate and floor plans are not to scale
- Through a Homewise Home For Life Plan people aged 60+ can secure this property for up to 59% less, by purchasing a Lifetime Lease.



40903168/20240624/JS/JS