



Price
£350,000

Freehold

3x  1x  1x 

**Mill Road, Waterlooville,
Hampshire, PO7**

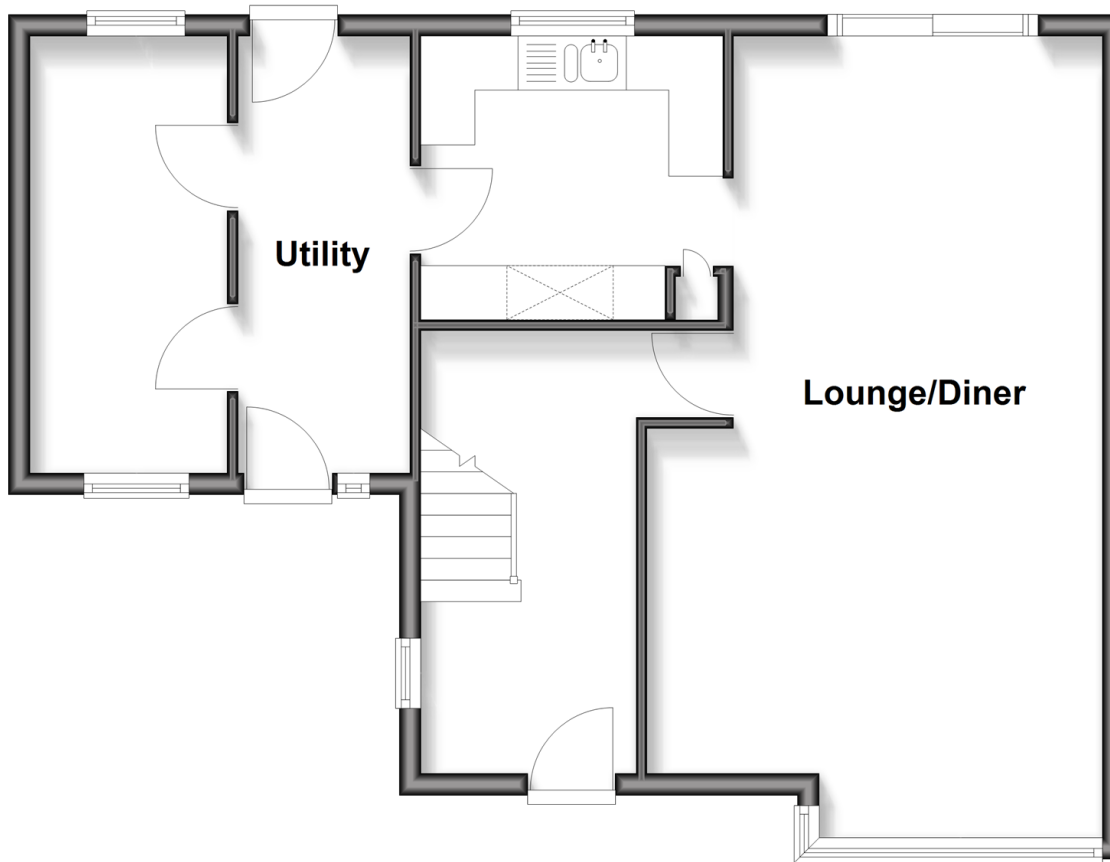
OVER 60?

Secure this property
for up to **59% less!**

cubitt&west
Helping you move forwards

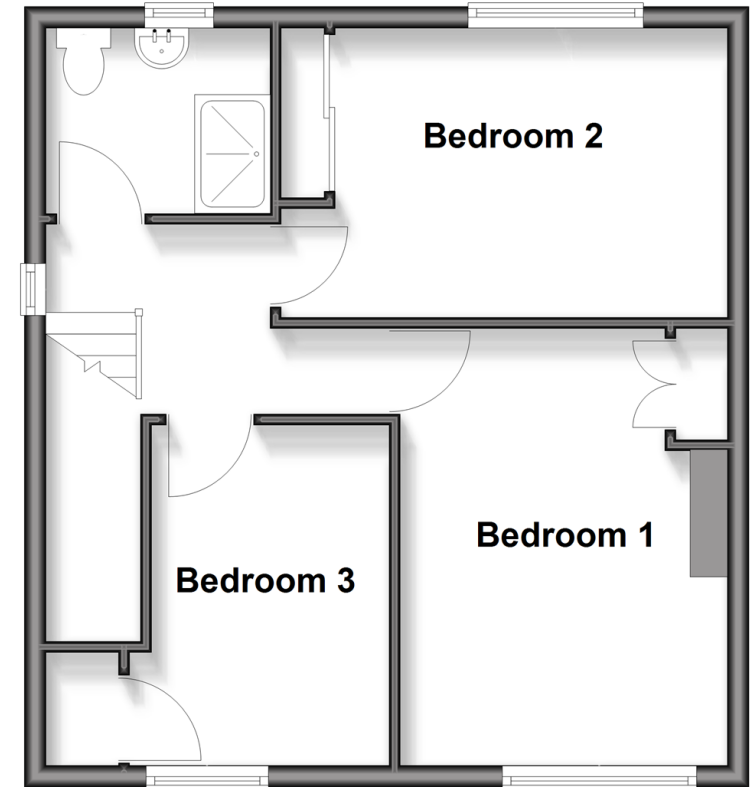
Ground Floor

Approx. 59.1 sq. metres (636.5 sq. feet)



First Floor

Approx. 43.0 sq. metres (462.8 sq. feet)



Accommodation

GROUND FLOOR

Entrance Hall

Lounge/Diner: 22'4 x 13'11 (6.81m x 4.24m)

Kitchen: 8'9 x 8'5 (2.67m x 2.57m)

Utility Room: 13'2 x 5'10 (4.02m x 1.78m)

Workshop/Office: 13'0 x 5'10 (3.97m x 1.78m)

FIRST FLOOR

Landing

Bedroom 1: 13'4 x 9'0 (4.07m x 2.75m)

Bedroom 2: 13'9 x 8'8 (4.19m x 2.64m)

Bedroom 3: 10'4 x 7'0 (3.15m x 2.14m)

Bathroom

OUTSIDE

Rear Garden

Off Road Parking



Main features

- Generous corner plot
- 2 outbuildings
- Open plan lounge/dining area
- Close to shops, schools and transport links
- Potential to extend with planning permission



Nearest Schools

Primary Schools: Waite End Primary 0.0 miles, Purbrook Junior School 0.3 miles, Hulbert Junior School 0.5 miles

Secondary Schools: Crookhorn College of Technology 0.6 miles, Oaklands Catholic School 0.7 miles, Purbrook Park



Transport Information

Train Stations: Bedhampton 2.1 miles, Cosham 2.5 miles, Havant 2.7 miles



Address

Mill Road, Waterlooville, Hampshire, PO7



Directions

For directions to this property please contact us.



cubitt&west
Helping you move forwards

Call Waterlooville Branch 02392 267244 ■ cubittandwest.co.uk



- Legal advice should be taken to verify fixtures/fittings, planning, alterations and/or lease details
- Appliances & services are untested, dimensions are approximate and floor plans are not to scale
- Through a Homewise Home For Life Plan people aged 60+ can secure this property for up to 50% less, by purchasing a Lifetime Lease



42410966/20251215/EH/NJ21