



Price
£260,000

Freehold

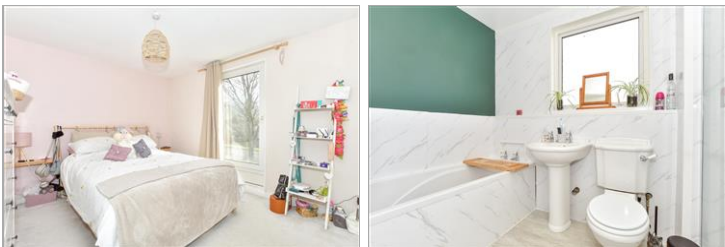
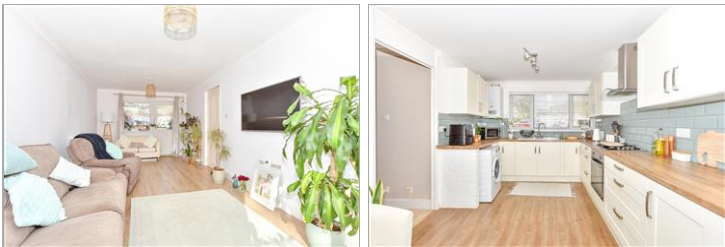
4x  1x  1x 

**Chaffinch Green,
Waterlooville,
Hampshire, PO8**

OVER 60?

Secure this property
for up to **59% less!**

cubitt&west
Helping you move forwards



Main features

- Well-proportioned home, ideal for investors and first-time buyers
- Modern kitchen space
- Four piece bathroom suite with downstairs cloakroom
- Enclosed rear garden
- Central location with easy access in/out of town

Accommodation

GROUND FLOOR

Entrance Hall

Cloakroom

Lounge: 21'7 x 10'6 (6.58m x 3.20m)

Kitchen: 21'9 x 9'8 (6.63m x 2.95m)

FIRST FLOOR

Landing

Bedroom 1: 13'10 x 10'10 (4.22m x 3.30m)

Bedroom 2: 12'8 x 10'8 (3.86m x 3.25m)

Bedroom 3: 10'8 x 9'8 (3.25m x 2.95m)

Bedroom 4: 8'9 x 7'2 (2.67m x 2.19m)

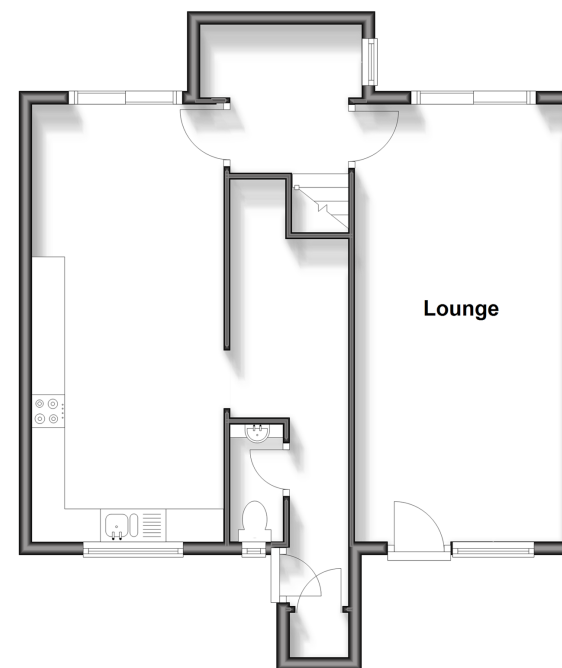
Bathroom

OUTSIDE

Rear Garden

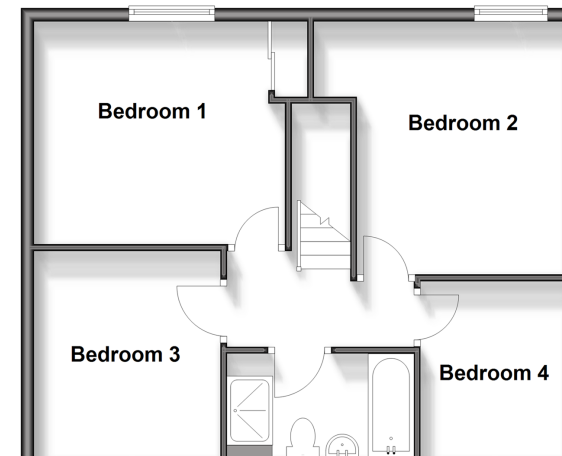
Ground Floor

Approx. 58.5 sq. metres (629.2 sq. feet)



First Floor

Approx. 53.9 sq. metres (580.0 sq. feet)



Call Waterloo - 02392 267244 ■ cubittandwest.co.uk

- Legal advice should be taken to verify fixtures/fittings, planning, alterations and/or lease details
- Appliances & services are untested, dimensions are approximate and floor plans are not to scale
- Through a Homewise Home For Life Plan people aged 60+ can secure this property for up to 59% less, by purchasing a Lifetime Lease.



42410714/20250405/EH/EC