



Price
£415,000

Freehold

4x  2x  1x 

**Cornbrook Grove,
Waterlooville,
Hampshire, PO7**

OVER 60?

Secure this property
for up to **59% less!**

cubitt&west
Helping you move forwards



Main features

- Offered with no forward chain
- Quiet cul-de-sac location close to travel links
- Neutrally decorated throughout giving this home a light and airy feel
- Enclosed sunny aspect rear garden
- Close to local shops, schools and woods

Accommodation

GROUND FLOOR

Entrance Hall

Cloakroom

Lounge: 14'10 x 12'0 (4.52m x 3.66m)

Kitchen: 14'11 x 8'11 (4.55m x 2.72m)

Dining Area: 12'0 x 8'11 (3.66m x 2.72m)

Lean-To: 9'7 x 9'0 (2.92m x 2.75m)

FIRST FLOOR

Landing

Bedroom 1: 20'8 maximum x 9'2 maximum (6.30m x 2.80m)

En-Suite Shower Room

Bedroom 2: 12'0 x 8'8 (3.66m x 2.64m)

Bedroom 3: 10'6 x 8'1 (3.20m x 2.47m)

Bedroom 4: 7'4 x 7'2 (2.24m x 2.19m)

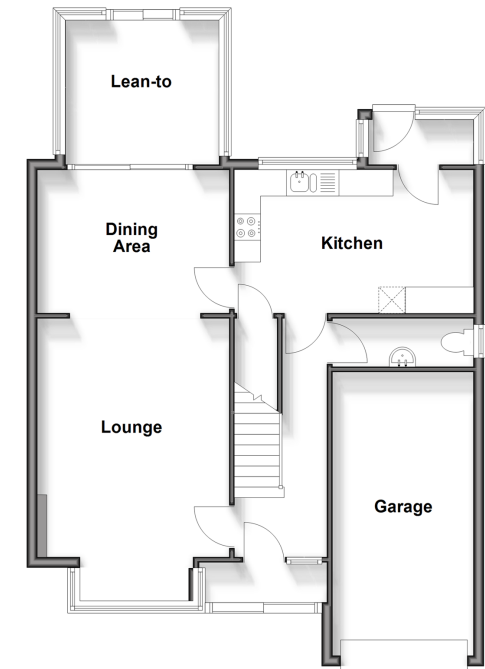
Bathroom

OUTSIDE

Front and Rear Gardens

Garage and Off Road Parking

Ground Floor
Approx. 79.4 sq. metres (854.8 sq. feet)



First Floor
Approx. 55.2 sq. metres (594.6 sq. feet)



Call Waterloo - 02392 267244 ■ cubittandwest.co.uk

- Legal advice should be taken to verify fixtures/fittings, planning, alterations and/or lease details
- Appliances & services are untested, dimensions are approximate and floor plans are not to scale
- Through a Homewise Home For Life Plan people aged 60+ can secure this property for up to 59% less, by purchasing a Lifetime Lease.



42409976/20250610/EH/EC