



Price
£325,000

Freehold

3x  1x  1x 

**London Road,
Waterlooville,
Hampshire, PO7**

OVER 60?

Secure this property
for up to **59% less!**

cubitt&west
Helping you move forwards



Main features

- Beautiful period property with ample living space
- Original fireplaces
- In need of modernisation
- Sunny aspect rear garden
- Offered with no forward chain

Accommodation

GROUND FLOOR

Entrance Hall

Lounge: 12'1 x 11'11 (3.69m x 3.63m)

Kitchen: 8'6 x 6'6 (2.59m x 1.98m)

Dining Area: 12'2 x 12'1 (3.71m x 3.69m)

FIRST FLOOR

Landing

Bedroom 1: 12'1 x 12'0 (3.69m x 3.66m)

Bedroom 2: 12'0 x 12'0 (3.66m x 3.66m)

Bedroom 3: 8'6 x 7'6 (2.59m x 2.29m)

Bathroom

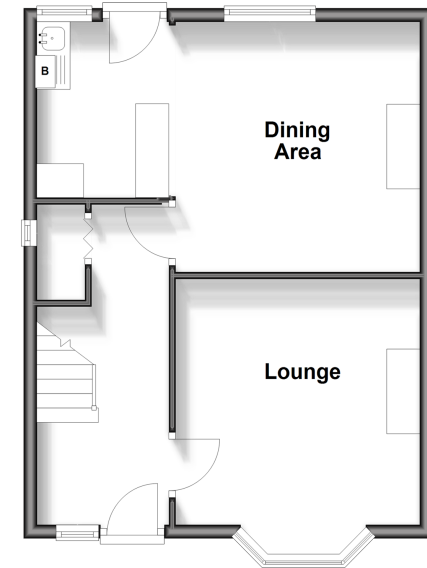
OUTSIDE

Rear Garden

Off Road Parking

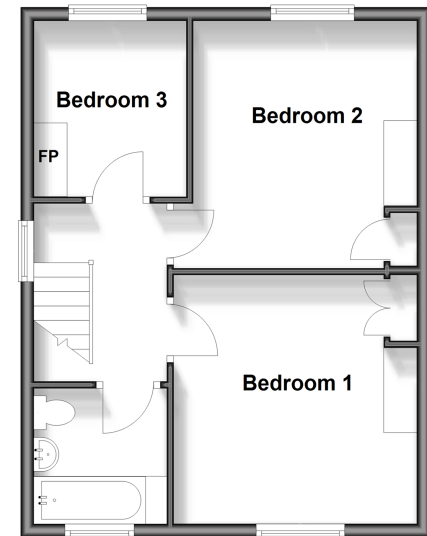
Ground Floor

Approx. 43.0 sq. metres (462.9 sq. feet)



First Floor

Approx. 42.8 sq. metres (460.4 sq. feet)



Call Waterlooille - 02392 267244 ■ cubittandwest.co.uk

- Legal advice should be taken to verify fixtures/fittings, planning, alterations and/or lease details
- Appliances & services are untested, dimensions are approximate and floor plans are not to scale
- Through a Homewise Home For Life Plan people aged 60+ can secure this property for up to 59% less, by purchasing a Lifetime Lease.



42410751/20250310/EH/EC