



Price

£435,000

Freehold

3x  2x  2x 

**Hart Plain Lodge,
London Road,
Waterlooville,
Hampshire, PO7**

OVER 60?

Secure this property
for up to **59% less!**

cubitt&west
Helping you move forwards



Main features

- Beautifully presented period cottage
- Flint fronted style, giving this home plenty of character
- Garage to the rear
- Located on the ever popular London Road
- Offered with no forward chain

Accommodation

GROUND FLOOR

Lounge: 23'5 x 14'1 (7.14m x 4.30m)
 Kitchen: 13'5 x 9'7 (4.09m x 2.92m)
 Utility Room: 7'4 x 6'1 (2.24m x 1.86m)
 Dining Room: 11'9 x 10'0 (3.58m x 3.05m)
 Conservatory: 10'0 x 9'7 (3.05m x 2.92m)
 Wet Room

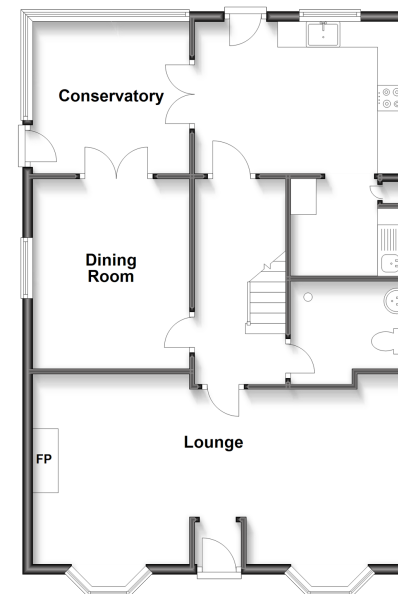
FIRST FLOOR

Landing
 Bedroom 1: 13'5 x 12'10 (4.09m x 3.91m)
 Bedroom 2: 12'10 x 10'0 (3.91m x 3.05m)
 Bedroom 3: 11'9 x 10'0 (3.58m x 3.05m)
 Bathroom

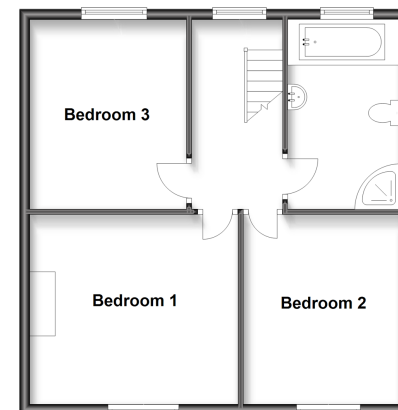
OUTSIDE

Rear Garden
 Garage

Ground Floor
 Approx. 77.2 sq. metres (830.8 sq. feet)



First Floor
 Approx. 54.6 sq. metres (588.0 sq. feet)



Call WaterlooVille - 02392 267244 ■ cubittandwest.co.uk

- Legal advice should be taken to verify fixtures/fittings, planning, alterations and/or lease details
- Appliances & services are untested, dimensions are approximate and floor plans are not to scale
- Through a Homewise Home For Life Plan people aged 60+ can secure this property for up to 59% less, by purchasing a Lifetime Lease.



42410682/20250218/EH/EC