



Price

£220,000

Leasehold

2x  2x  1x 

**Beech Court,
Blendworth Lane,
Waterlooville,
Hampshire, PO8**

OVER 60?

Secure this property
for up to **59% less!**

cubitt&west
Helping you move forwards



Main features

- First floor apartment with allocated parking
- Fully fitted kitchen with integrated Bosch appliances
- Built 4 years ago with remainder of NHBC
- High specification finish throughout
- Located close to the town centre and A3

Accommodation

FIRST FLOOR

Entrance Hall

Lounge: 18'6 x 10'9 (5.64m x 3.28m)

Kitchen: 10'9 x 5'4 (3.28m x 1.63m)

Bedroom 1: 12'10 x 8'5 (3.91m x 2.57m)

En-Suite Shower Room

Bedroom 2: 9'1 x 7'6 (2.77m x 2.29m)

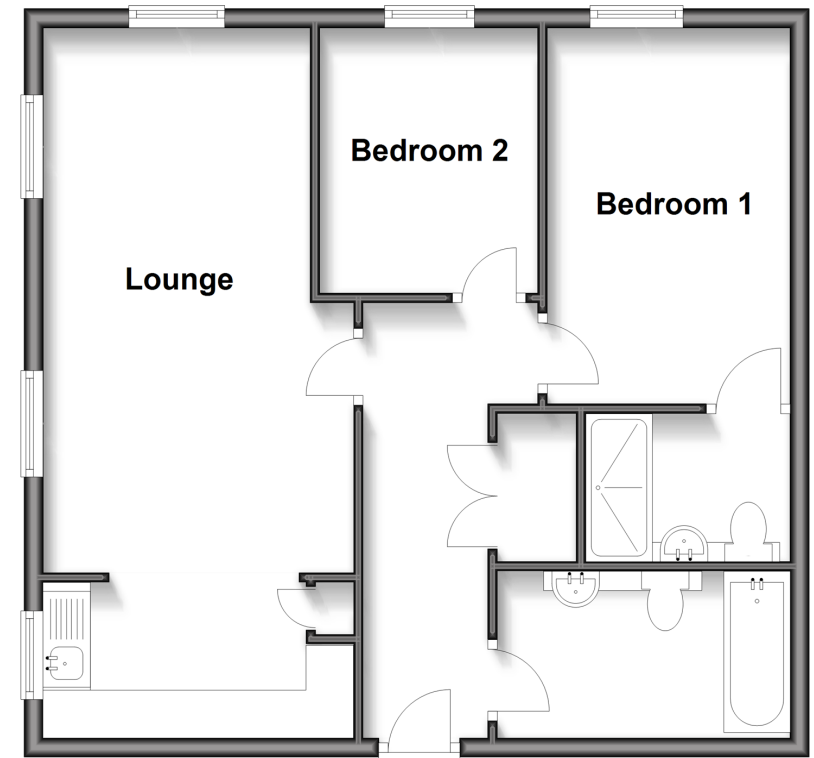
Bathroom

OUTSIDE

Allocated Parking

First Floor

Approx. 58.3 sq. metres (627.3 sq. feet)



Call WaterlooVille - 02392 267244 ■ cubittandwest.co.uk

- Legal advice should be taken to verify fixtures/fittings, planning, alterations and/or lease details
- Appliances & services are untested, dimensions are approximate and floor plans are not to scale
- Through a Homewise Home For Life Plan people aged 60+ can secure this property for up to 59% less, by purchasing a Lifetime Lease.



48071351/20250317/EH/EC