



OVER 60?

Secure this property
for up to **59% less!**

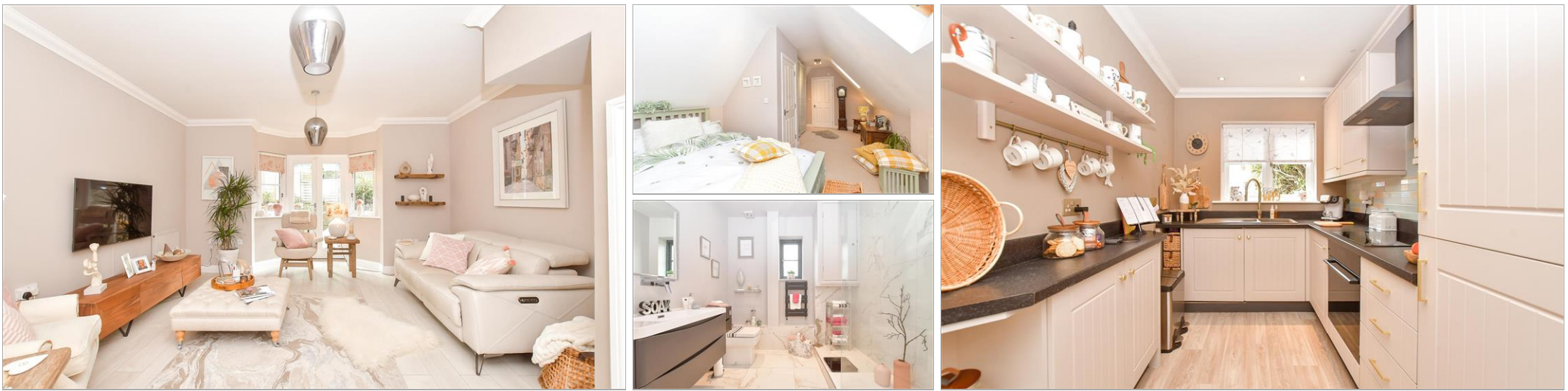
Price
£340,000

Freehold

3x  1x  1x 

**Castle Mews,
Waterlooville,
Hampshire, PO8**

cubitt&west
Helping you move forwards



Main features

- A modern property in a gated estate offered
- Immaculately presented throughout
- Allocated parking for two cars
- Sought after location in Horndean
- Close to shops, bus stops and motorway access

Accommodation

GROUND FLOOR

Entrance Hall
Cloakroom
Kitchen: 9'0 x 8'2 (2.75m x 2.49m)
Lounge: 18'9 x 15'2 (5.72m x 4.63m)

FIRST FLOOR

Landing
Bedroom 2: 13'11 x 9'1 (4.24m x 2.77m)
Bedroom 3: 13'10 x 8'3 (4.22m x 2.52m)
Shower Room

SECOND FLOOR

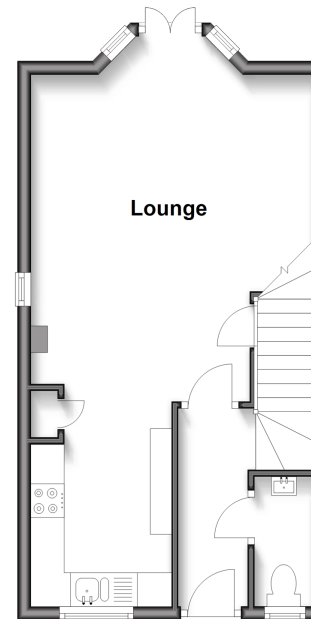
Bedroom 1: 19'2 x 10'4 (5.85m x 3.15m)
Store Room: 10'4 x 6'3 (3.15m x 1.91m)

OUTSIDE

Rear Garden
Allocated Parking

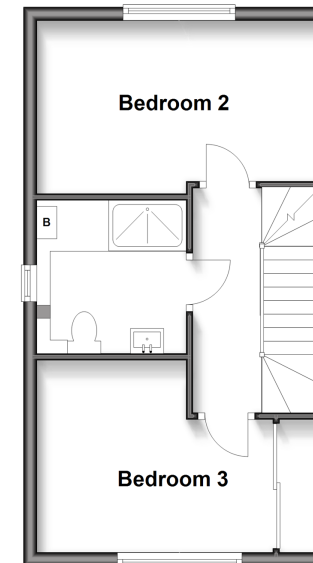
Ground Floor

Approx. 34.2 sq. metres (368.0 sq. feet)



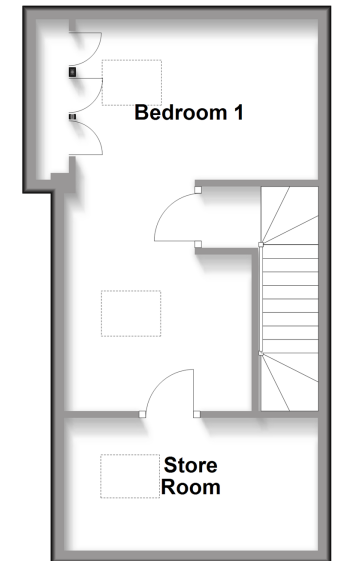
First Floor

Approx. 33.3 sq. metres (358.3 sq. feet)



Second Floor

Approx. 31.0 sq. metres (333.4 sq. feet)



Call Waterlooville - 02392 267244 ■ cubittandwest.co.uk

■ Legal advice should be taken to verify fixtures/fittings, planning, alterations and/or lease details
■ Through a Homewise Home For Life Plan people aged 60+ can secure this property for up to 59% less, by purchasing a Lifetime Lease.

■ Appliances & services are untested, dimensions are approximate and floor plans are not to scale



42410731/20250205/EH/EC