



**Price**

**£109,995**

**Leasehold**

1x  1x  1x 

**Swallow Court, East  
Meon Road,  
Waterlooville,  
Hampshire, PO8**

**cubitt & west**  
Helping you move forwards



## Main features

- Recently refurbished first floor flat
- Highly sought after over 55's retirement complex
- Village location
- Beautiful rural views
- Good transport links and close to the A3

## Accommodation

### FIRST FLOOR

Entrance Hall

Kitchen: 8'10 x 8'2 (2.69m x 2.49m)

Lounge: 13'6 x 11'2 (4.12m x 3.41m)

Bedroom: 13'6 x 9'2 (4.12m x 2.80m)

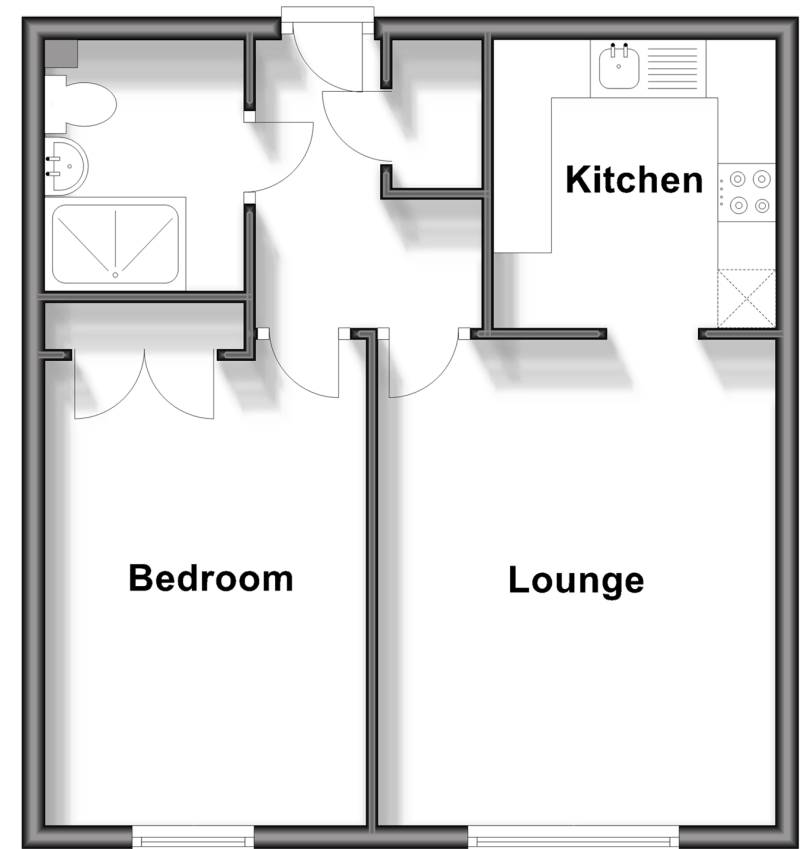
Shower Room

### OUTSIDE

Communal Garden

## First Floor

Approx. 42.7 sq. metres (459.8 sq. feet)



**Call Waterloo - 02392 267244 ■ [cubittandwest.co.uk](http://cubittandwest.co.uk)**

- Legal advice should be taken to verify fixtures/fittings, planning, alterations and/or lease details
- Appliances & services are untested, dimensions are approximate and floor plans are not to scale



42410603/20240919/EH/YH