



**Price**  
**£532,500**

**Freehold**

3x  2x  2x 

**Cavendish Drive,  
Waterlooville,  
Hampshire, PO7**

**OVER 60?**

Secure this property  
for up to **59% less!**

**cubitt & west**  
Helping you move forwards





## Main features

- Beautifully presented property throughout
- Stunning landscaped private garden with green house
- Downstairs and upstairs bathroom
- Fantastic quiet location close to local shops, bus links and schools
- Air conditioning in a majority of the rooms and solar panels

## Accommodation

### GROUND FLOOR

Entrance Hall

Kitchen: 14'7 x 10'2 (4.45m x 3.10m)

Lounge: 14'5 x 12'1 (4.40m x 3.69m)

Dining Area: 11'4 x 8'5 (3.46m x 2.57m)

Conservatory: 18'1 x 10'2 (5.52m x 3.10m)

Bedroom 3: 10'6 x 10'0 (3.20m x 3.05m)

Bathroom

Cloakroom

### FIRST FLOOR

Landing

Bedroom 1: 15'0 x 13'8 (4.58m x 4.17m)

Bedroom 2: 12'9 x 9'9 (3.89m x 2.97m)

Bathroom

### OUTSIDE

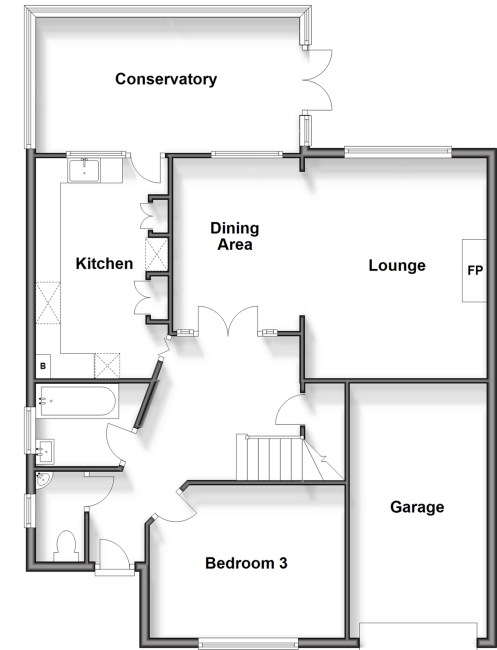
Rear Garden

Garage and Off Road Parking

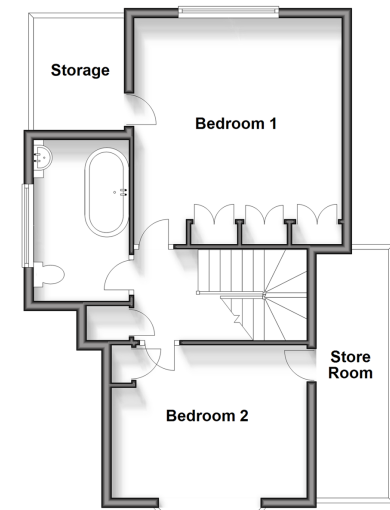
**Call Waterlooville - 02392 267244 ■ [cubittandwest.co.uk](http://cubittandwest.co.uk)**

- Legal advice should be taken to verify fixtures/fittings, planning, alterations and/or lease details
- Appliances & services are untested, dimensions are approximate and floor plans are not to scale
- Through a Homewise Home For Life Plan people aged 60+ can secure this property for up to 59% less, by purchasing a Lifetime Lease.

**Ground Floor**  
Approx. 99.0 sq. metres (1065.3 sq. feet)



**First Floor**  
Approx. 45.8 sq. metres (492.7 sq. feet)



42410607/20241017/EH/MO