



Price
£300,000

Freehold

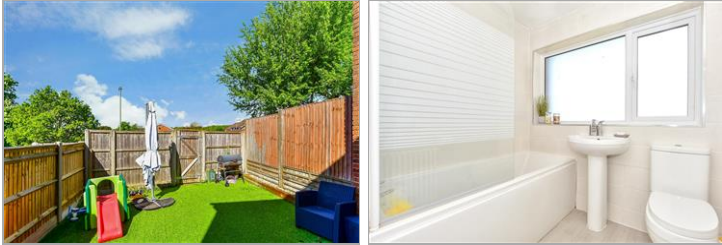
3x  1x  1x 

**Cypress Crescent,
Waterlooville,
Hampshire, PO8**

OVER 60?

Secure this property
for up to **59% less!**

cubitt & west
Helping you move forwards



Main features

- Beautiful open plan new modern kitchen/diner
- Downstairs cloakroom
- Sought after location close to shops and schools
- Perfect for first time buyers
- Sunny aspect rear garden
- Garage and off road parking

Accommodation

GROUND FLOOR

Entrance Hall
 Cloakroom
 Lounge: 17'0 x 16'0 (5.19m x 4.88m)
 Kitchen/Diner: 16'0 x 11'0 (4.88m x 3.36m)

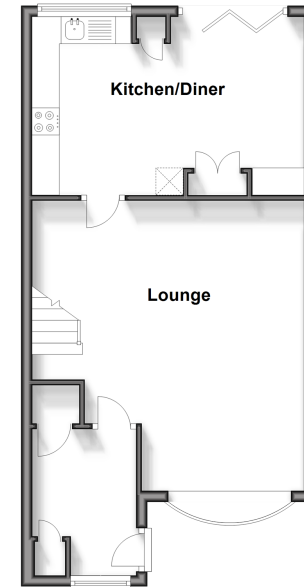
FIRST FLOOR

Landing
 Bedroom 1: 14'0 x 9'0 (4.27m x 2.75m)
 Bedroom 2: 11'1 x 9'0 (3.38m x 2.75m)
 Bedroom 3: 10'0 x 6'0 (3.05m x 1.83m)
 Bathroom

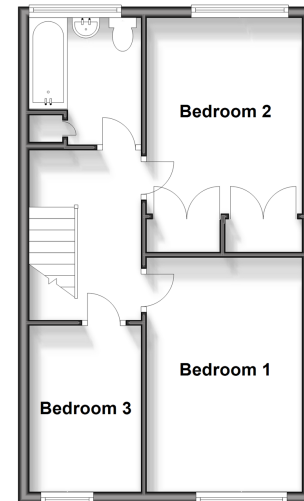
OUTSIDE

Rear Garden
 Garage
 Off Road Parking

Ground Floor
 Approx. 46.8 sq. metres (504.1 sq. feet)



First Floor
 Approx. 43.5 sq. metres (468.7 sq. feet)



Call Waterlooville - 02392 267244 ■ cubittandwest.co.uk

- Legal advice should be taken to verify fixtures/fittings, planning, alterations and/or lease details
- Appliances & services are untested, dimensions are approximate and floor plans are not to scale
- Through a Homewise Home For Life Plan people aged 60+ can secure this property for up to 59% less, by purchasing a Lifetime Lease.



42410537/20240530/DG1/MO