



Price
£325,000

Freehold

3x  2x  1x 

**Lincoln Place,
Waterlooville,
Hampshire, PO7**

cubitt & west
Helping you move forwards



Main features

- Quiet cul-de-sac location
- New in 2017 and still under NHBC warranty
- En-suite to bedroom 1
- Modern, bright and spacious throughout
- Requested location and close to all amenities and lots of green space

Accommodation

GROUND FLOOR

Entrance Hall

Lounge: 15'0 x 12'1 (4.58m x 3.69m)

Kitchen: 12'0 x 10'0 (3.66m x 3.05m)

W.C.

FIRST FLOOR

Landing

Bedroom 1: 11'0 x 9'0 (3.36m x 2.75m)

En-suite Shower Room

Bedroom 2: 11'0 x 8'0 (3.36m x 2.44m)

Bedroom 3: 12'0 x 6'0 (3.66m x 1.83m)

Family Bathroom

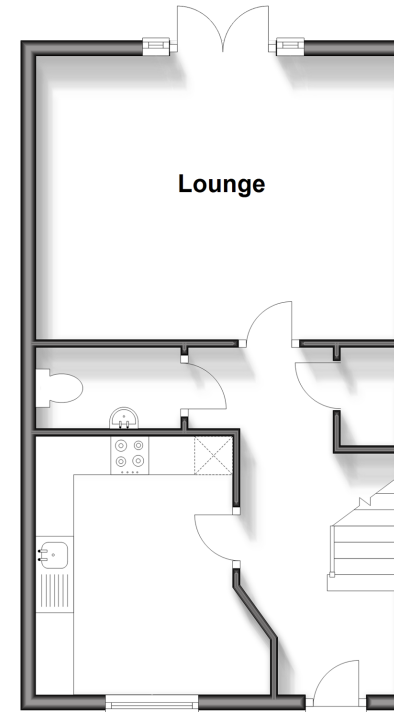
OUTSIDE

Rear Garden

Garage and Off Road Parking

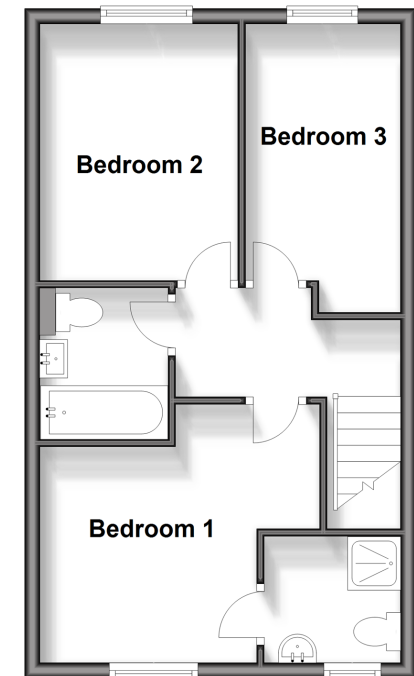
Ground Floor

Approx. 39.7 sq. metres (427.7 sq. feet)



First Floor

Approx. 39.7 sq. metres (427.7 sq. feet)



Call Waterlooville - 02392 267244 ■ cubittandwest.co.uk

- Legal advice should be taken to verify fixtures/fittings, planning, alterations and/or lease details
- Appliances & services are untested, dimensions are approximate and floor plans are not to scale



42410503/20240312/JT/MO