



Price
£315,000

Freehold

3x  1x  2x 

**Bell Crescent,
Waterlooville,
Hampshire, PO7**

OVER 60?

Secure this property
for up to **59% less!**

cubitt & west
Helping you move forwards



Main features

- Open plan lounge/dining area
- Modern kitchen with fitted appliances
- Large conservatory with patio doors onto the private rear garden
- Upstairs shower room and downstairs cloakroom
- Close to local transport and shops

Accommodation

GROUND FLOOR

Entrance Hall

Lounge/Dining Area: 22'8 x 13'9 (6.91m x 4.19m)

Kitchen: 19'0 x 11'0 (5.80m x 3.36m)

Conservatory: 9'0 x 8'0 (2.75m x 2.44m)

Cloakroom

FIRST FLOOR

Landing

Bedroom 1: 13'0 x 10'0 (3.97m x 3.05m)

Bedroom 2: 13'0 x 8'0 (3.97m x 2.44m)

Bedroom 3: 10'0 x 7'0 (3.05m x 2.14m)

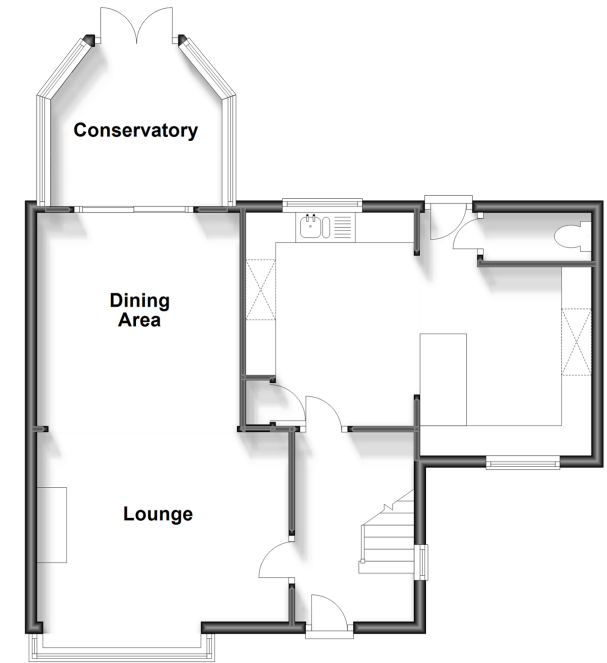
Shower Room

OUTSIDE

Front and Rear Gardens

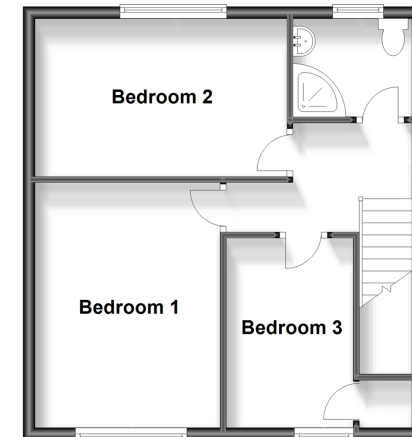
Ground Floor

Approx. 63.0 sq. metres (677.8 sq. feet)



First Floor

Approx. 43.1 sq. metres (463.5 sq. feet)



Call Waterlooville - 02392 267244 ■ cubittandwest.co.uk

- Legal advice should be taken to verify fixtures/fittings, planning, alterations and/or lease details
- Appliances & services are untested, dimensions are approximate and floor plans are not to scale
- Through a Homewise Home For Life Plan people aged 60+ can secure this property for up to 59% less, by purchasing a Lifetime Lease.



42410409/20240305/JT/MO