



Price

£475,000

Freehold

4x  2x  1x 

**Murray Road,
Waterlooville,
Hampshire, PO8**

OVER 60?

Secure this property
for up to **59% less!**

cubitt&west
Helping you move forwards



Main features

- Immaculately presented home with flexible accommodation
- Bright and airy with character features
- Spacious kitchen and separate utility room
- Extensive sunny aspect rear garden
- In a prime location near to good schools and amenities

Accommodation

GROUND FLOOR

Entrance Hall

Lounge: 15'0 x 11'5 (4.58m x 3.48m)

Kitchen: 21'0 x 10'5 (6.41m x 3.18m)

Utility Room: 9'0 x 6'0 (2.75m x 1.83m)

Cloakroom

FIRST FLOOR

Landing

Bedroom 1: 15'0 x 8'8 (4.58m x 2.64m)

En-Suite Shower Room

Bedroom 2

Bedroom 3: 11'8 x 9'2 (3.56m x 2.80m)

Bedroom 4: 8'8 x 8'2 (2.64m x 2.49m)

Bathroom

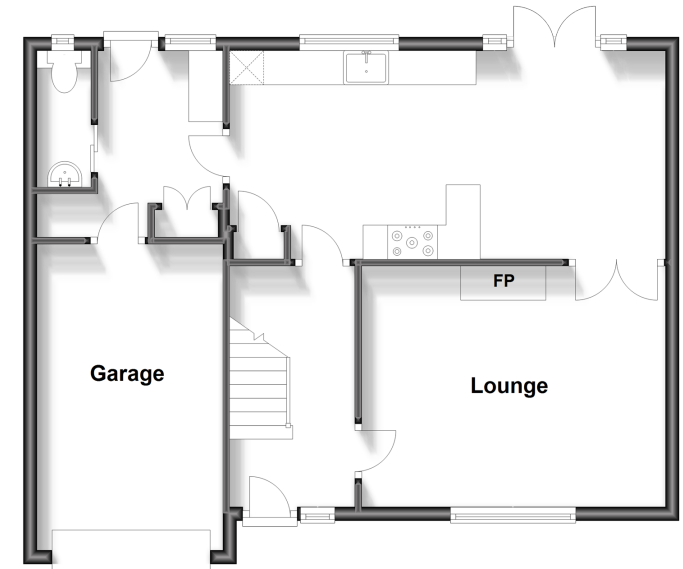
OUTSIDE

Front and Rear Gardens

Garage and Off Road Parking

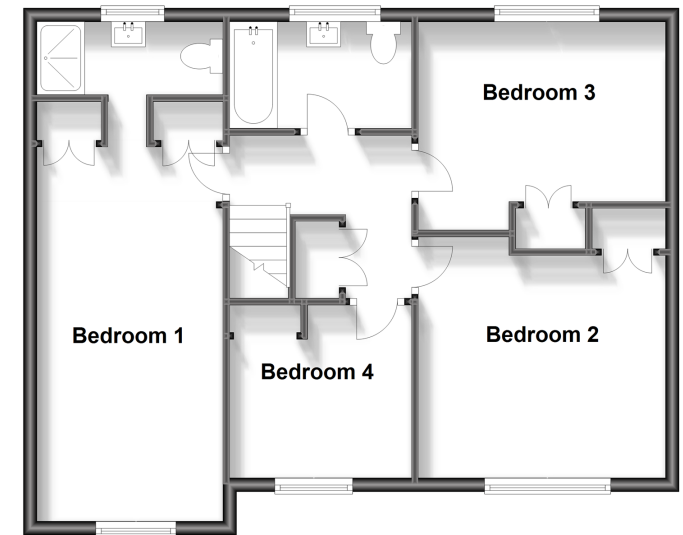
Ground Floor

Approx. 63.4 sq. metres (682.9 sq. feet)



First Floor

Approx. 63.4 sq. metres (682.9 sq. feet)



Call Waterloo - 02392 267244 ■ cubittandwest.co.uk

- Legal advice should be taken to verify fixtures/fittings, planning, alterations and/or lease details
- Appliances & services are untested, dimensions are approximate and floor plans are not to scale
- Through a Homewise Home For Life Plan people aged 60+ can secure this property for up to 59% less, by purchasing a Lifetime Lease.



42410381/20231018/EH/RH