



Price
£323,750

Freehold

3x  1x  1x 

**Tanner's Ridge,
Waterlooville,
Hampshire, PO7**

OVER 60?

Secure this property
for up to **59% less!**

cubitt & west
Helping you move forwards



Main features

- Offered with no forward chain
- Open plan living and a large conservatory
- Spacious bedrooms and an upstairs bathroom
- Sunny aspect garden with a garage at the rear of the property and two allocated parking spaces
- Perfect for first time buyers

Accommodation

GROUND FLOOR

Porch

Lounge: 18'5 x 11'10 (5.62m x 3.61m)

Dining Area: 9'7 x 9'3 (2.92m x 2.82m)

Kitchen: 9'0 x 8'0 (2.75m x 2.44m)

Conservatory: 13'0 x 9'0 (3.97m x 2.75m)

FIRST FLOOR

Landing

Bedroom 1: 13'0 x 9'0 (3.97m x 2.75m)

Bedroom 2: 11'0 x 8'0 (3.36m x 2.44m)

Bedroom 3: 9'1 x 8'0 (2.77m x 2.44m)

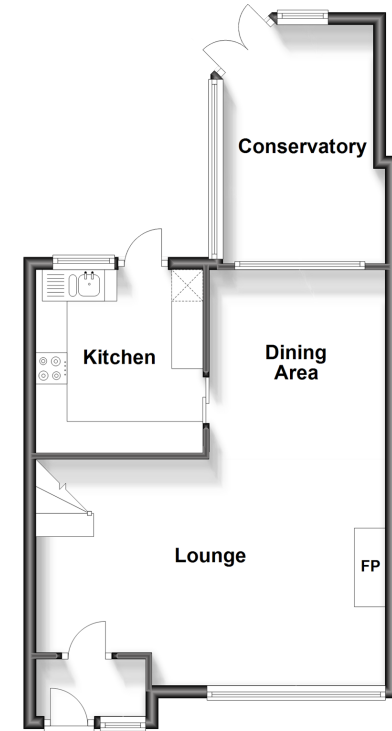
Bathroom

OUTSIDE

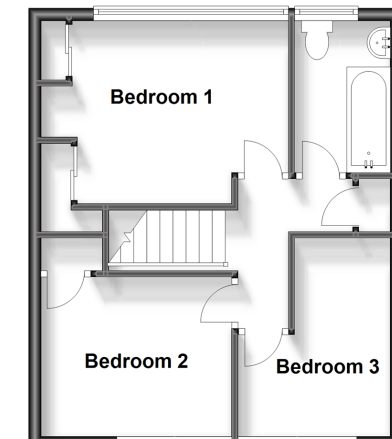
Front and Rear Gardens

Garage and Allocated Parking

Ground Floor
Approx. 47.3 sq. metres (508.8 sq. feet)



First Floor
Approx. 37.1 sq. metres (399.2 sq. feet)



Call Waterlooville - 02392 267244 ■ cubittandwest.co.uk

- Legal advice should be taken to verify fixtures/fittings, planning, alterations and/or lease details
- Appliances & services are untested, dimensions are approximate and floor plans are not to scale
- Through a Homewise Home For Life Plan people aged 60+ can secure this property for up to 59% less, by purchasing a Lifetime Lease.



42410329/20240115/MO/MO