



Price
£279,000

Freehold

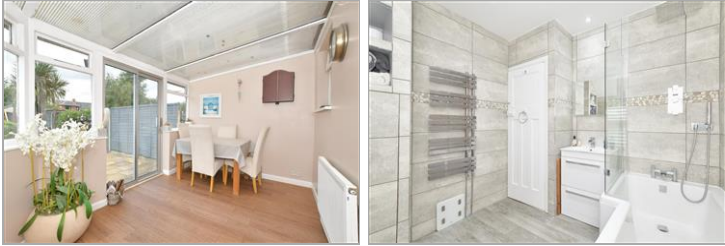
2x  1x  2x 

**Queens Grove,
Waterlooville,
Hampshire, PO7**

OVER 60?

Secure this property
for up to **59% less!**

cubitt & west
Helping you move forwards



Main features

- Open plan living areas
- Modern kitchen
- Conservatory and a downstairs cloakroom
- Good sized bedrooms with an upstairs bathroom
- Large sunny aspect garden with a shed

Accommodation

GROUND FLOOR

Entrance Hall

Lounge: 14'0 x 11'0 (4.27m x 3.36m)

Kitchen: 17'0 x 8'0 (5.19m x 2.44m)

Conservatory: 12'1 x 8'0 (3.69m x 2.44m)

Cloakroom

FIRST FLOOR

Landing

Bedroom 1: 14'0 x 9'1 (4.27m x 2.77m)

Bedroom 2: 9'0 x 8'1 (2.75m x 2.47m)

Bathroom

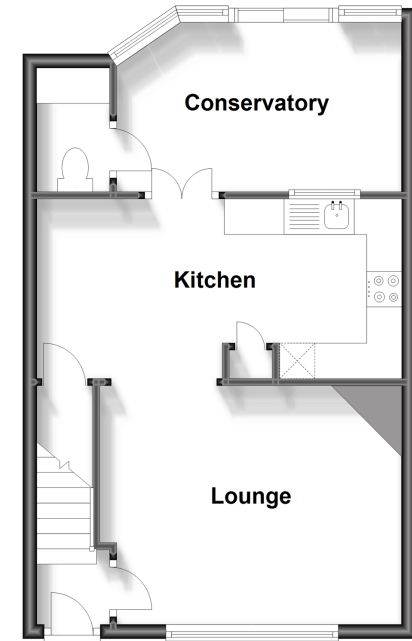
OUTSIDE

Rear Garden

Off Road Parking

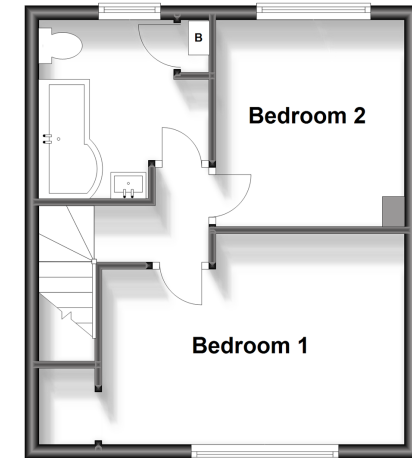
Ground Floor

Approx. 43.1 sq. metres (464.0 sq. feet)



First Floor

Approx. 31.1 sq. metres (335.0 sq. feet)



Call Waterlooville - 02392 267244 ■ cubittandwest.co.uk

- Legal advice should be taken to verify fixtures/fittings, planning, alterations and/or lease details
- Appliances & services are untested, dimensions are approximate and floor plans are not to scale
- Through a Homewise Home For Life Plan people aged 60+ can secure this property for up to 59% less, by purchasing a Lifetime Lease.



42410355/20240618/NJ21/MO