

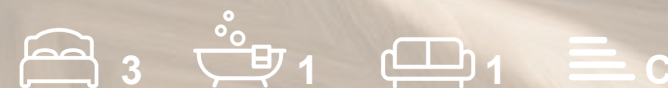


RESIDE
—
MANCHESTER



3.07 Lower Downs Court
18a The Downs, Altrincham, WA14 2PU

Asking Price £445,000



3.07 Lower Downs Court
18a The Downs, Altrincham, WA14
2PU

Last Remaining 3-Bedroom Apartment!

Welcome to The Downs Quarter, a highly anticipated development perfectly positioned in the heart of Altrincham town centre. This prime location places you within easy reach of outstanding schools, popular restaurants, scenic parks, excellent transport links, and a wide range of local amenities.

The Place at The Downs Quarter is an exclusive collection of just six apartments within a landmark building. Offering a selection of elegant two- and three-bedroom homes, the building features contemporary brickwork, striking angular glass windows, and distinctive timber-clad framing—creating a truly eye-catching architectural statement.

This final available three-bedroom apartment is located on the top floor of The Place and features impressive ceiling heights in most rooms. The home comprises three well-proportioned bedrooms, a sleek modern bathroom, and includes high-quality flooring throughout. An undercroft parking space is also included for added convenience.

The Location

Altrincham is an affluent market town. It boasts a thriving community, offering a selection of award-winning retail, dining, drinking and leisure facilities, as well as several outstanding primary and secondary schools. It's location close to both the cosmopolitan city of Manchester and charming Cheshire countryside adds to its appeal, with Altrincham included in The Sunday Times Best Places to Live 2022. It is not the first time the town has received this much coveted accolade, meaning its popularity remains year on year.

"a melting pot of culture for everyone to enjoy"
www.visitaltrincham.com

The Downs Quarters

35 contemporary one, two and three bedroom apartments, as well as 4 stunning three bedroom townhouses. Undercroft car parking.

A total of 39 properties will be built and 46 car parking spaces available, providing a rare opportunity to purchase a high quality, new build home in this much sought-after modern market town.

In addition to the residential properties, The Downs Quarter will offer one stand-alone commercial unit, plus four live/work houses, creating a vibrant development to work and live in one of the UK's most desirable town centres.





About McGoff / Villafont Homes

The McGoff Group is an Altrincham-based, multi award-winning company with an impressive heritage spanning 48 years. Privately owned, the Group incorporates a multi-faceted collection of like-minded businesses, with construction retained at the core, and offers a holistic range of services; acquire, design, build, operate and maintain.

Villafont Homes is the residential arm of the McGoff Group.

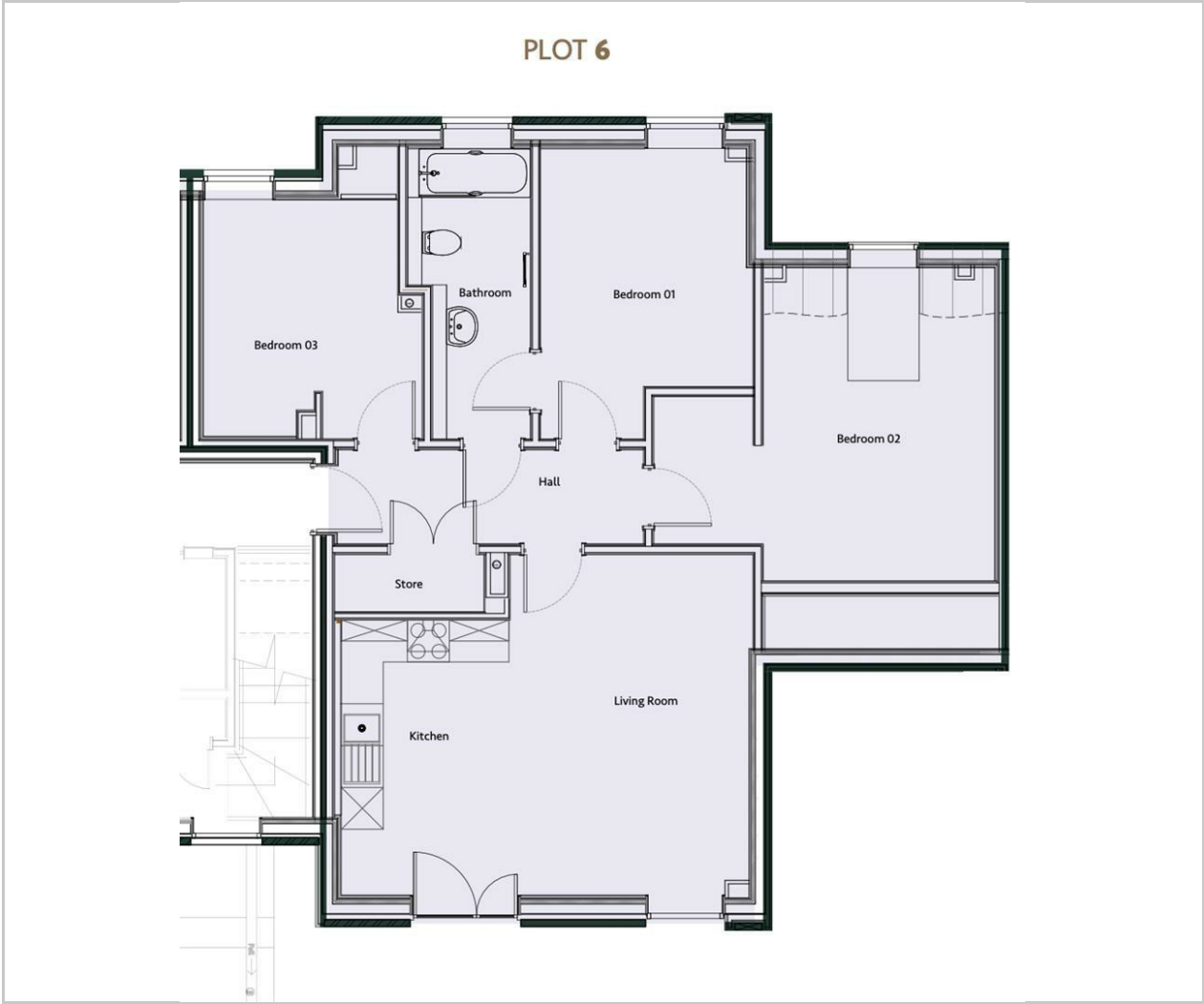
A leading North West developer, Villafont is renowned for its design, quality, style and superior specification. The company is committed to delivering sophisticated homes, priding itself on its high build standards and immaculate finishes. Each and every Villafont home is bespoke, built with care, boasts luxurious touches and located in a desirable residential location.

Disclaimer

Villafont give notice that these details are produced for general promotion of The Downs Quarter development only and for no other purpose. Particulars are set out as a general outline only for the guidance of intending purchasers and do not constitute part of an offer or contract. All descriptions, CGIs and references to conditions and necessary conditions for use and occupation and other details are given in good faith and are believed to be correct as at date of publication, but any intending purchasers should not rely on them as statements or representations of fact. Details may be subject to variation and intending purchasers must satisfy themselves by inspection or otherwise as to the correctness of each item.

- Final 3-bedroom apartment remaining
- Prime location in the heart of Altrincham town centre
- Surrounded by top-rated schools, parks, restaurants, and shops
- Excellent transport links and access to local amenities
- Located within The Place, an exclusive building of just 6 luxury apartments
- Situated on the top floor with impressive ceiling heights in most rooms
- Undercroft parking space included for secure, convenient parking
- High-quality flooring throughout the apartment, ready to move in
- EPC Rating C
- Viewings now available

Floor Plan

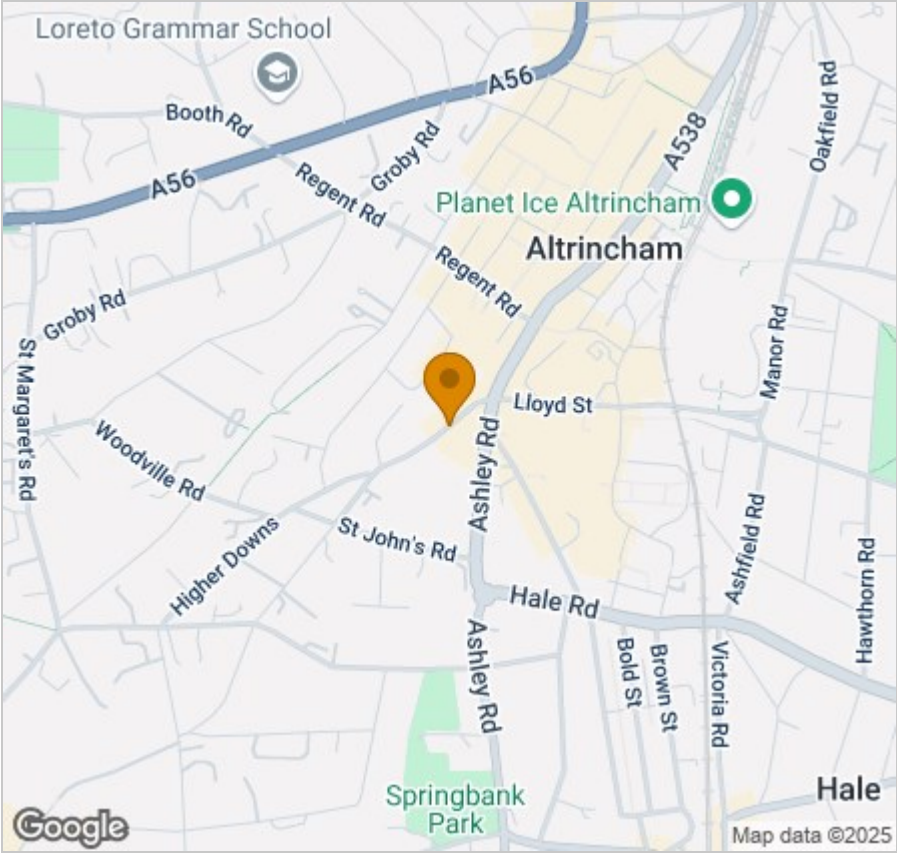


Viewing

Please contact our Reside Manchester Office on 0161 837 2840 if you wish to arrange a viewing appointment for this property or require further information.

These particulars, whilst believed to be accurate are set out as a general outline only for guidance and do not constitute any part of an offer or contract. Intending purchasers should not rely on them as statements of representation of fact, but must satisfy themselves by inspection or otherwise as to their accuracy. No person in this firms employment has the authority to make or give any representation or warranty in respect of the property.

Area Map



Energy Efficiency Graph

