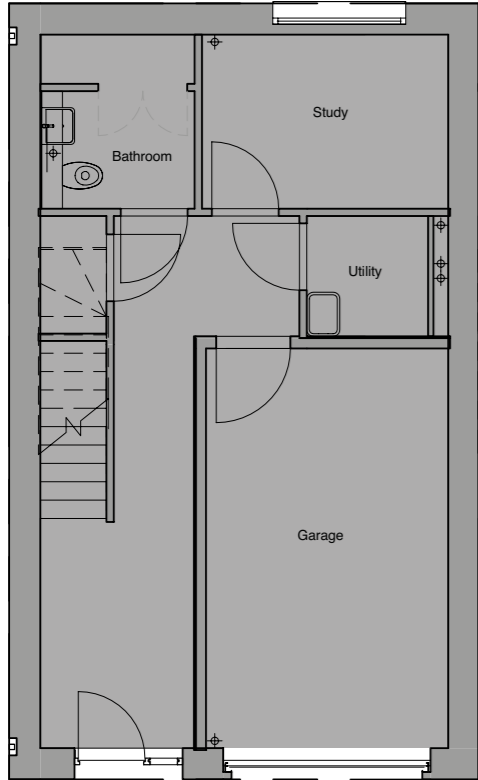
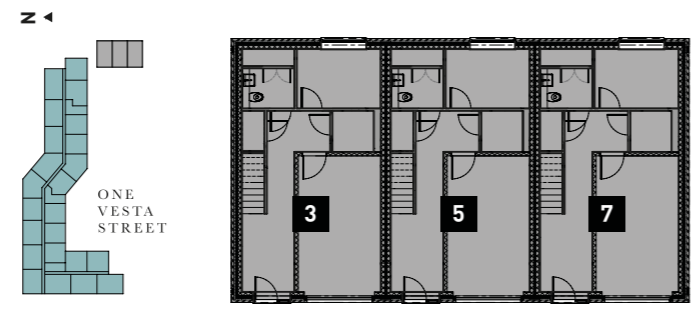


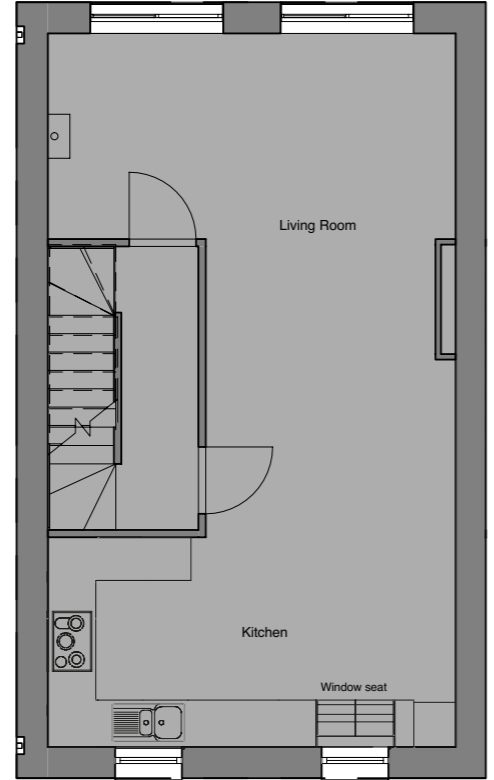
ONE VESTA STREET

THE
TOWNHOUSE
COLLECTION

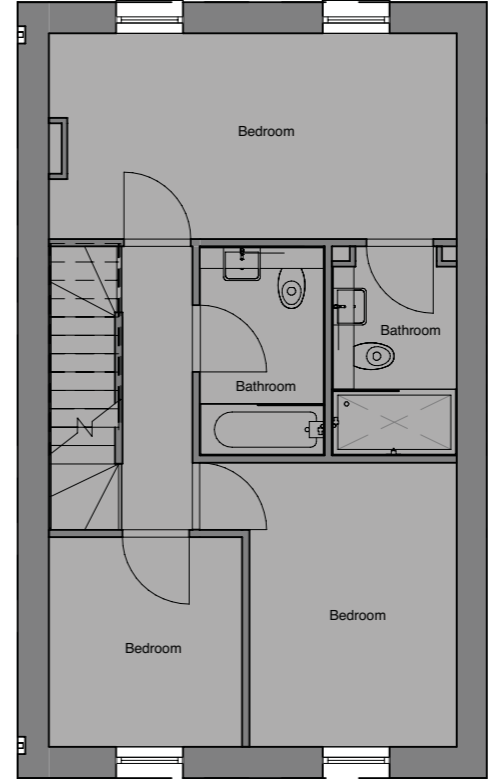
4 BED TOWNHOUSE



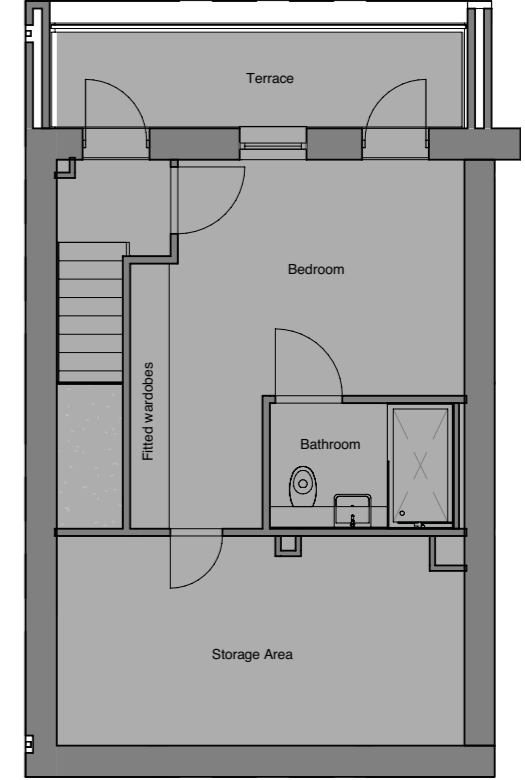
GROUND FLOOR



1ST FLOOR



2ND FLOOR



3RD FLOOR

THE SPECIFICATION

FLOORING:

- 18mm engineered Oak flooring to living areas and kitchen.
- Carpets to bedrooms.
- Grey porcelain tiled flooring to bathrooms.

KITCHENS BY OMEGA:

- Incorporating gloss Limestone base and wall units and Silestone work surfaces in blanco.
- Omega stainless steel sink with chrome mixer tap.
- Brushed chrome switch plates, with under wall unit lighting.

APPLIANCES:

- Neff stainless steel electric double oven and Neff black glass hob with glass splashback, with chimney style extractor hood.
- Integrated CDA fridge/freezer.
- Integrated CDA dishwasher.
- 60cm wine cooler

BATHROOMS:

- White three-piece suite with thermostatic shower and Villeroy & Boch sanitaryware.
- Glass mirror and chrome heated towel rail.

MASTER BEDROOM:

- Monarch fitted bedroom wardrobes incorporating modular shelving, shoe tray, tie rack and internal mirror.

GENERAL:

- Secured By Design solid core front door with architrave painted in Portland.
- Security video doorbell addressable via App.
- Stainless Steel Ironmongery.
- Walls and ceilings painted off white with woodwork painted in Portland.
- White plastic switchplates.
- Networked Wi-Fi receivers on every floor.
- Heating is provided via white flat panel Dimplex Monterey radiators.
- Remotely addressable Wi-Fi enabled heating and hot water controls via App.

LIGHTING:

- Mixture of LED downlights, spotlights and pendant lighting. The lighting uses the Ansell OCTO wirelessly controllable lighting solution. Using Casambi technology OCTO delivers the following features:
 - Turn on/off, or dim up/down.
 - Timer functionality with built in sunrise and sunset app setting.
 - Holiday/Security mode.
 - Energy Saving.
 - Scene setting.
 - Motion detection with a network of sensor and smart switch options.
 - Control from anywhere depending on Wi-Fi connection.

WEBSITE:
ONEVESTASTREET.COM

CONTACT RESIDE MANCHESTER ON:
0161 837 2840

Floorplans shown for the apartments and Townhouses at Vesta are for approximate measurement only. Exact layout and sizes may vary. All measurements may vary within a tolerance of 5%. Floorplans have been sized to fit the page, as a result this plan may not be the same scale as plans on other pages.

