



RESIDE

MANCHESTER



6 The Lightwell 12 St. Anns Square
, Manchester, M2 7HW

£1,450 PCM



6 The Lightwell 12 St. Anns

, Manchester, M2 7HW

A beautifully presented two-bedroom apartment located in The Lightwell, St Ann's Square – one of Manchester's most sought-after addresses.

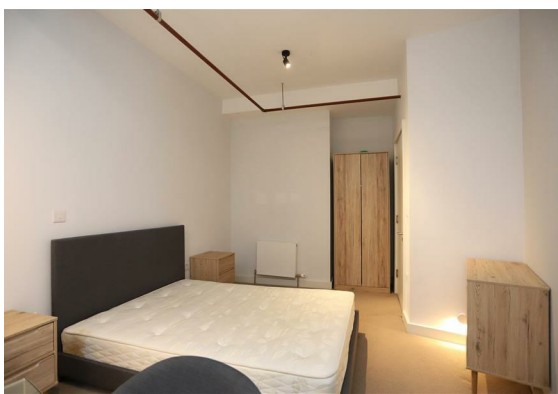
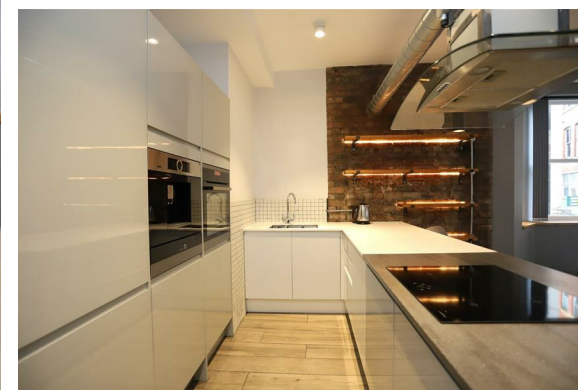
This stylish apartment offers a perfect blend of contemporary design and high-quality finishes throughout. The bright and spacious open-plan living area features large windows that fill the space with natural light, alongside a modern fitted kitchen with integrated appliances.

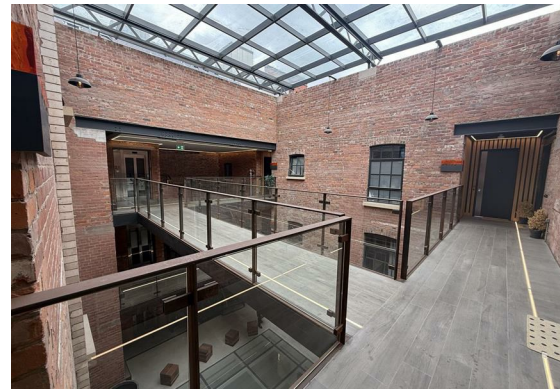
Situated in the heart of the city centre, The Lightwell is just moments from Deansgate, the Royal Exchange Theatre, and Manchester Arndale, placing the very best of shopping, dining, and entertainment right on your doorstep.

Residents can also enjoy access to a beautifully landscaped internal courtyard, secure entry system, and lift access throughout the development.

Available fully furnished and ready to move in immediately.

- Two Double Bedrooms
- One Bathroom
- Exposed Brickwork & Beams
- Furnished Throughout
- Available Immediately
- EPC Rating C
- Prime, Central Location
- High Ceilings and Spacious Rooms
- Located on St Ann's Square





Floor Plan

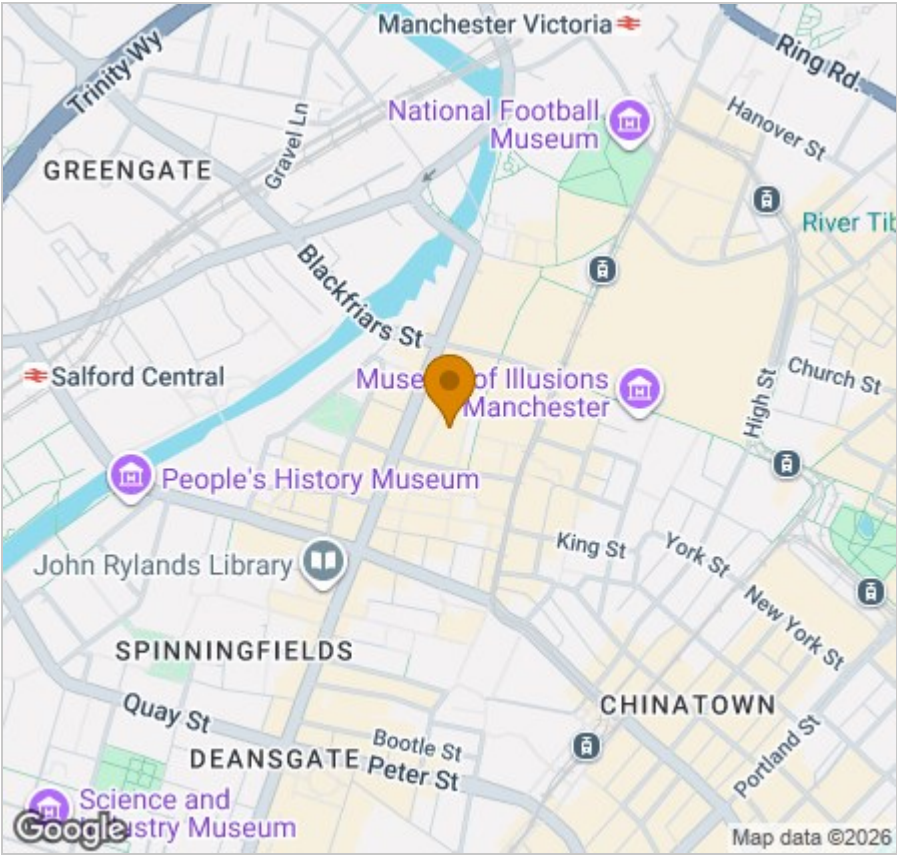


Viewing

Please contact our Reside Manchester Office on 0161 837 2840 if you wish to arrange a viewing appointment for this property or require further information.

These particulars, whilst believed to be accurate are set out as a general outline only for guidance and do not constitute any part of an offer or contract. Intending purchasers should not rely on them as statements of representation of fact, but must satisfy themselves by inspection or otherwise as to their accuracy. No person in this firms employment has the authority to make or give any representation or warranty in respect of the property.

Area Map



Energy Efficiency Graph

