



RESIDE

MANCHESTER

219 The Hacienda 11-15 Whitworth Street West
, Manchester, M1 5DB

Asking Price £265,000



219 The Hacienda 11-15
Whitehall Street, Manchester, M1 5DB

Welcome to this charming 2-bedroom apartment located in the sought-after Hacienda Apartments. This residence offers 2 double bedrooms, spacious living areas, secure parking, and amenities like 24-hour concierge services.

Combining modern living with a serene environment, this apartment is ideal for those seeking both comfort and convenience.

Residents also enjoy the proximity to Manchester's vibrant city center, making it a prime choice for professionals and anyone seeking a blend of cultural heritage and modern convenience.

This property is chain free - open to owner occupiers and investors.

The Tour

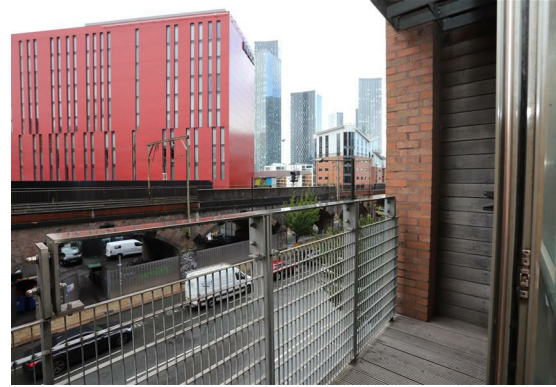
Entering the apartment, you are greeted by a spacious hallway, fitted with natural wood strip flooring which stretches through to the living area, creating a warm and inviting ambience. The large living area leads out onto the balcony, offering an outdoor space to relax or entertain.

The kitchen boasts ceramic floor tiles, complemented by premium fitted units by Dada. It features an inset double bowl sink with a waste disposal unit, a chrome mixer tap, and laminated worktops with a matching splashback. You'll also find an integrated electric oven, newly fitted microwave, CDA dishwasher, CDA fridge, and freezer, with a ceramic hob and stainless steel recirculating extractor hood, all designed to make meal preparation a breeze. A washer dryer is conveniently tucked away in a dedicated storage cupboard.

Both spacious bedrooms are fitted with carpets and large windows, flooding the both rooms with natural light. The primary bedroom benefits from an ensuite, housing a large shower, whilst the main bathroom features a stylish three-piece suite, with ceramic tiles extending into both bathroom and ensuite.

The apartment is equipped with new radiators that can be controlled via WiFi for easy temperature management, as well as a new hot water storage cylinder, ensuring modern convenience and energy efficiency throughout. Three storage cupboards throughout the apartment maximise the space. This apartment seamlessly combines style and function, offering everything you need for modern living.





The Area

The Hacienda Apartments, located on Whitworth Street, hold a special place in the city's cultural and architectural history. Originally, the site was home to the legendary Hacienda nightclub, which played a pivotal role in shaping Manchester's music scene during the 1980s and 1990s. The club was a cornerstone of the "Madchester" movement, influencing artists and music lovers from around the world.

After the club's closure, the site was redeveloped into modern residential apartments, known today as the Hacienda Apartments. These stylish apartments maintain the building's iconic legacy while offering contemporary urban living in the heart of Manchester. Situated close to Deansgate, Oxford Road, and Manchester Piccadilly, the apartments provide easy access to transport links, shops, restaurants, and nightlife.

Lease Information

Lease Length: 125 years from 2003 (104 years remaining)

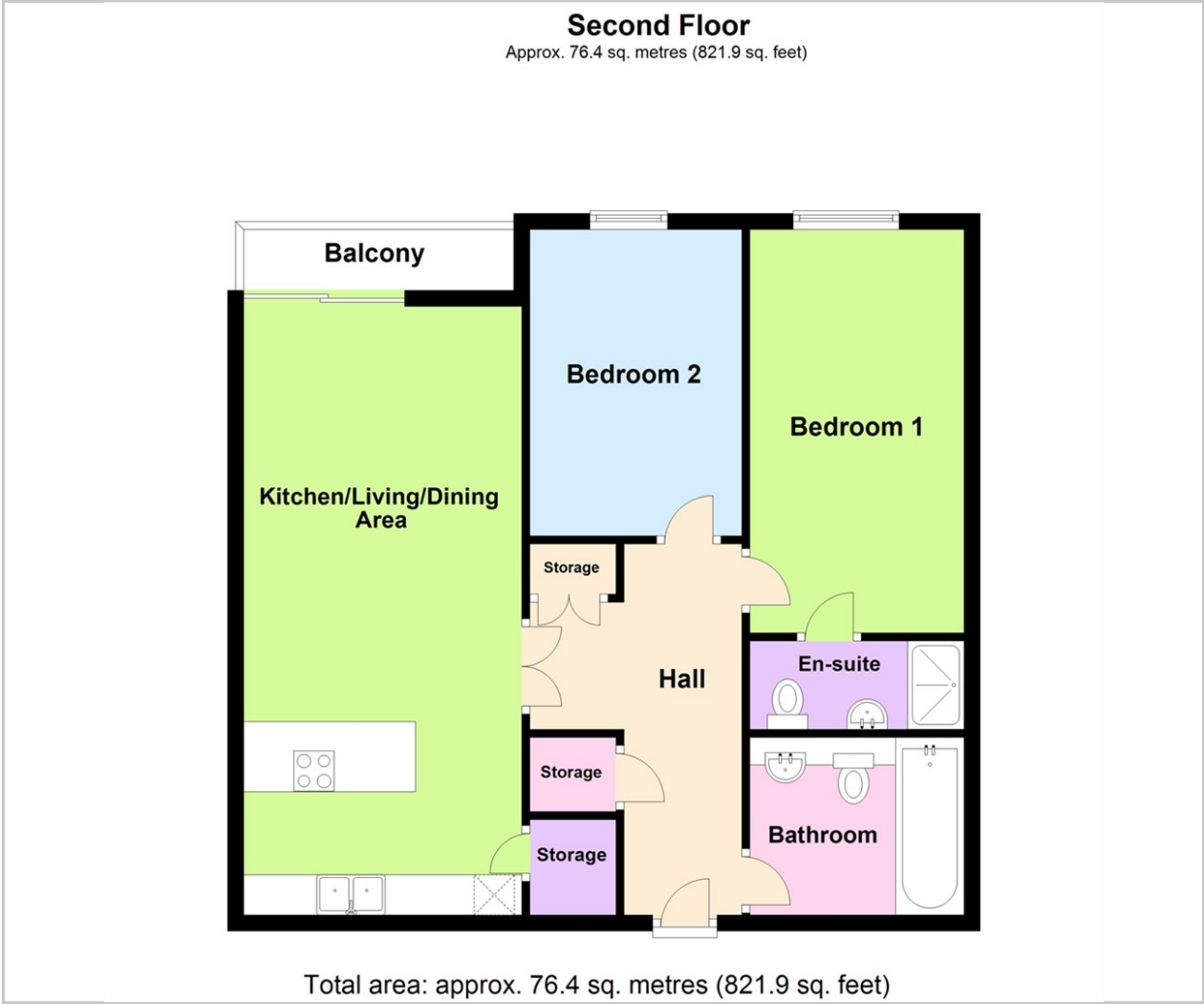
Service Charge: £3933.44 per annum.

Ground Rent: £250 per annum.

- 2 Double Bedrooms
- Balcony with Castlefield Views
- Parking Included
- 24 Hour Concierge
- Central Location
- EPC Rating C
- Easy Access to Transport Links
- No Chain



Floor Plan



Viewing

Please contact our Reside Manchester Office on 0161 837 2840 if you wish to arrange a viewing appointment for this property or require further information.

These particulars, whilst believed to be accurate are set out as a general outline only for guidance and do not constitute any part of an offer or contract. Intending purchasers should not rely on them as statements of representation of fact, but must satisfy themselves by inspection or otherwise as to their accuracy. No person in this firms employment has the authority to make or give any representation or warranty in respect of the property.

Area Map



Energy Efficiency Graph

