

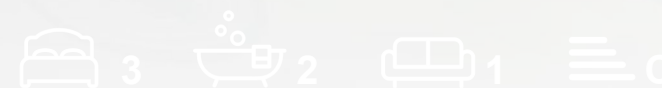


RESIDE  
MANCHESTER



5006 Silvercroft Street  
Manchester, M15 4ZU

**Asking Price £1,240,000**





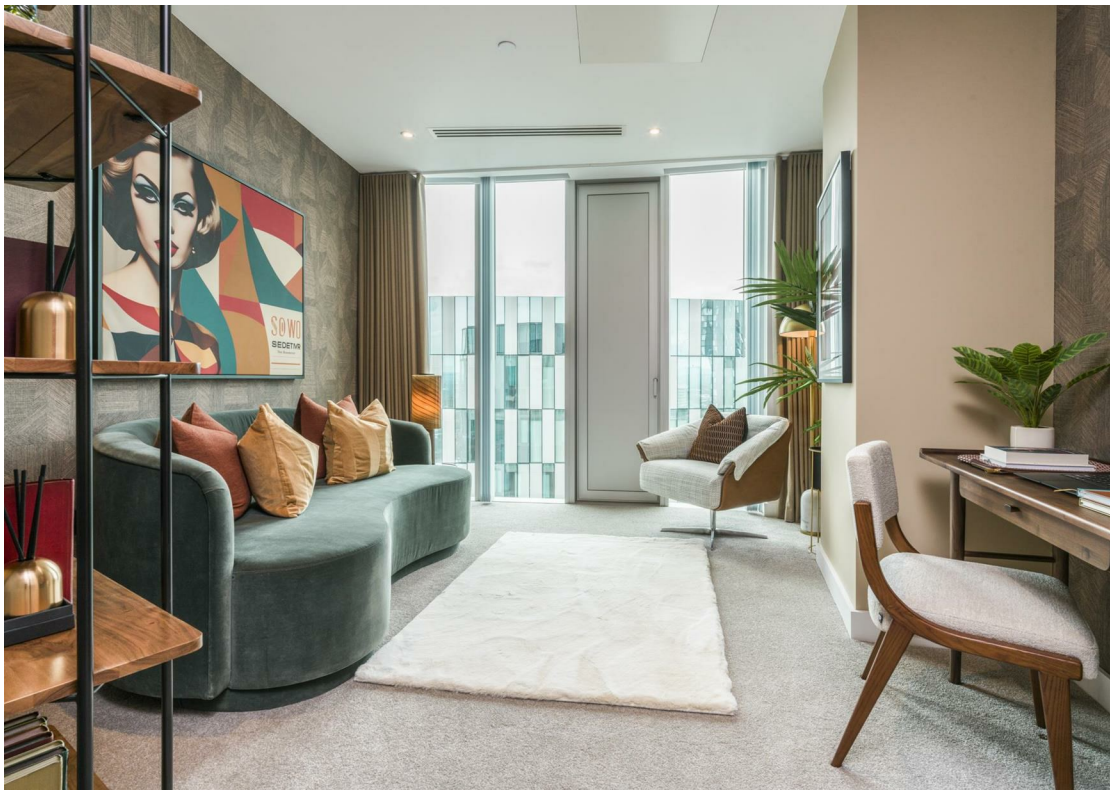
**5006 Silvercroft Street**  
, Manchester, M15 4ZU

Developed by Renaker and masterfully designed by acclaimed architects SimpsonHaugh, Three60 is Manchester's first-ever cylindrical skyscraper — a striking and distinctive addition to the city's skyline. Situated in New Jackson, a premier high-rise district at the southern gateway to Manchester city centre, this landmark development is truly one of a kind.

Occupying the uppermost floors, this impressive duplex penthouse offers breathtaking panoramic views. Spanning over 1,700sq ft, the residence features three spacious double bedrooms, two bathrooms, an expansive open-plan living and kitchen area, and a separate guest WC. Air conditioning is installed in both the living areas and bedrooms, while vertical blackout blinds and Sardinia Oak herringbone laminate flooring enhance the space with style and functionality. The penthouse has been finished to an exceptional standard throughout.

Residents of Three60 enjoy exclusive access to a superb range of private amenities focused on health, wellbeing, and lifestyle. These include a 24-hour concierge service, co-working areas with private booths, a Peloton spin studio, fully equipped gym, yoga studio, residents' lounge, rooftop terrace, and a versatile private suite for multi-purpose use.

\*Please note that these pictures are taken from the show apartment plot 4904







### Specification

The kitchen features Oolong Oak tall, base, and wall units paired with a sleek black quartz splashback. It is equipped with a Quooker Fusion 3-in-1 hot water tap, an integrated Siemens venting induction hob, oven, combination microwave, extractor fan, and warming drawer. Additional appliances include a Siemens full-height larder fridge freezer, an integrated dishwasher, a 600mm wine cooler, and a Siemens washer and dryer.

The bathroom offers both a revitalising rainhead shower and a versatile handheld option, complemented by a sleek glass shower screen and chrome Hansgrohe brassware. It features a wall-mounted wash basin and WC with a concealed cistern and soft-close seat. Customised storage units with mirrored doors and shelving provide ample space, along with integrated shaver sockets and lighting.

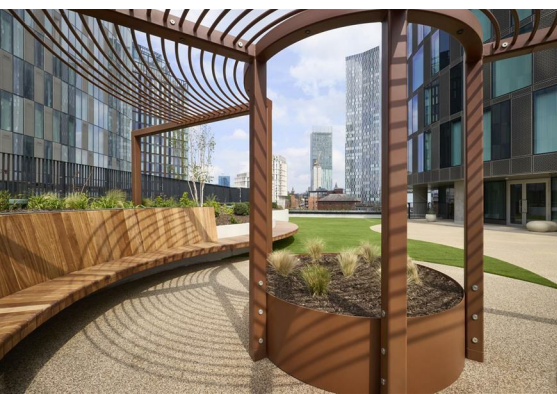
Herringbone Sardinia Oak laminate wood flooring runs throughout the kitchen, living area, and hallway, while the bedrooms are fitted with plush carpets for added comfort.

### The Location

New Jackson is set to become a thriving new community within the city. Once completed, New Jackson will comprise more than 6400 homes, public spaces, educational and medical facilities and several new sustainable travel routes, with a total value of more than £25 million.

Externally, New Jackson Park is one of a series of distinctive and interconnected new public spaces at the heart of the New Jackson neighbourhood in which Three60 is situated. Whilst linking to each other, these spaces also seek to reinforce connections between the wider city centre, more local amenities such as the Castlefield Basin and Hulme Park, and the immediate area's new residential buildings, Crown Street Primary School and New Jackson Medical Centre, all of which support the neighbourhood's growing residential community.

- Stunning duplex penthouse
- Three generous double bedrooms
- Exceptional residents' amenities
- Spacious layout
- High-spec finish
- Comfortable year-round climate control
- Open-plan kitchen and living area
- Lifestyle-focused features
- Ready to view
- EPC Rating C





Floor Plan

