



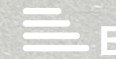
# RESIDE

MANCHESTER



30 Laystall Street  
Piccadilly, Manchester, M1 2JZ

**Offers In The Region Of £920,000**





## 30 Laystall Street

Piccadilly, Manchester, M1 2JZ

Brand new development just a few minutes walk from Piccadilly Station.

The development comprises of 4 x 1 bed apartments, one apartment per level.

Ideally situated in a modern building just moments from excellent transport links, shops, gyms, and everyday amenities.

Finished to a high standard throughout, the apartment features a bright open-plan living area with a sleek fitted kitchen, spacious double bedroom, and a contemporary bathroom. Large windows flood the space with natural light, while modern fixtures and fittings add a touch of luxury to everyday living.

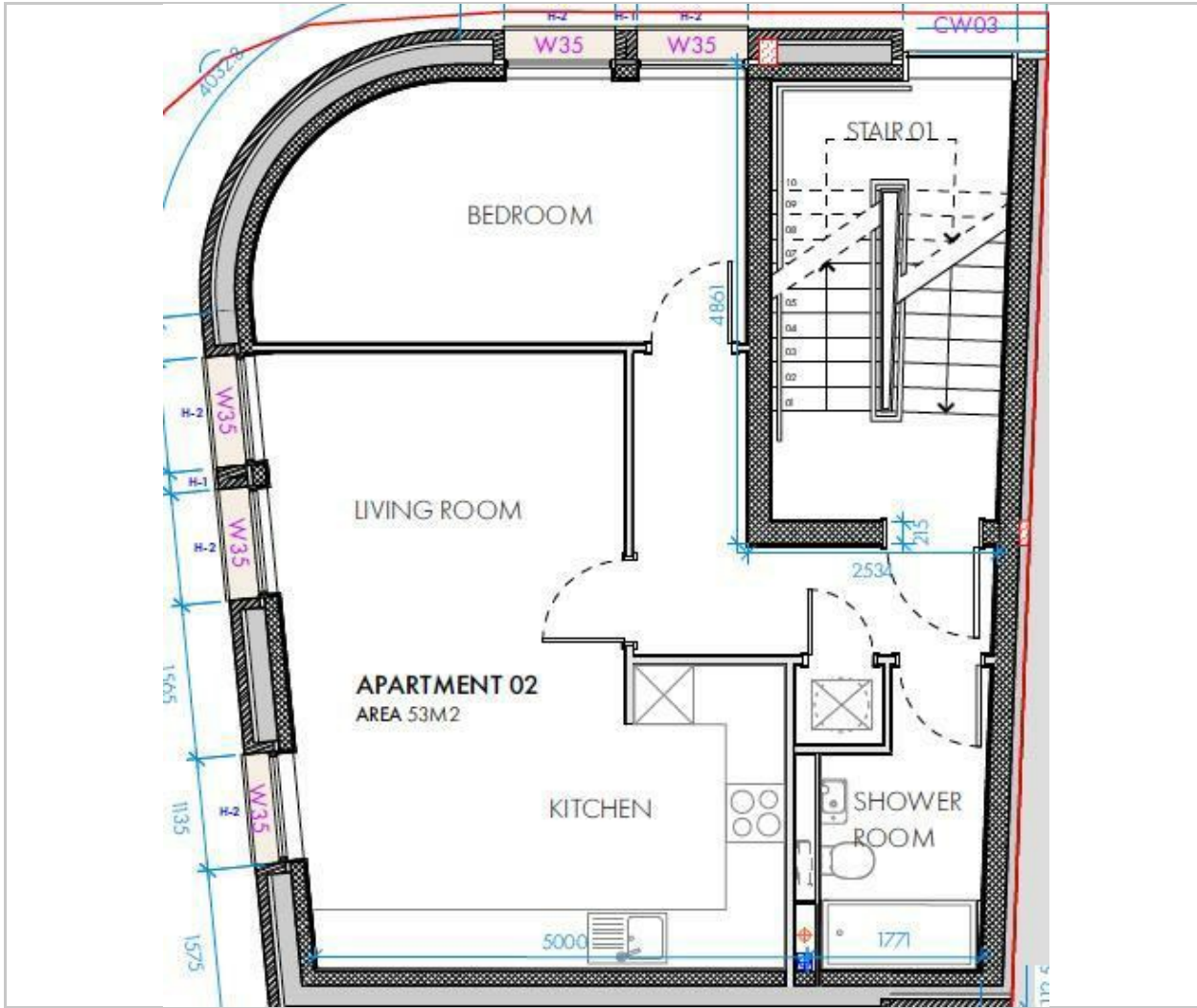
- New Development
- 4 x One Bedroom Apartments
- Freehold Opportunity
- Completed June 2025
- Superb Location
- EPC Rating B
- Great Specification Throughout
- 999 year lease
- Minimal Service Charge
- No Ground Rent



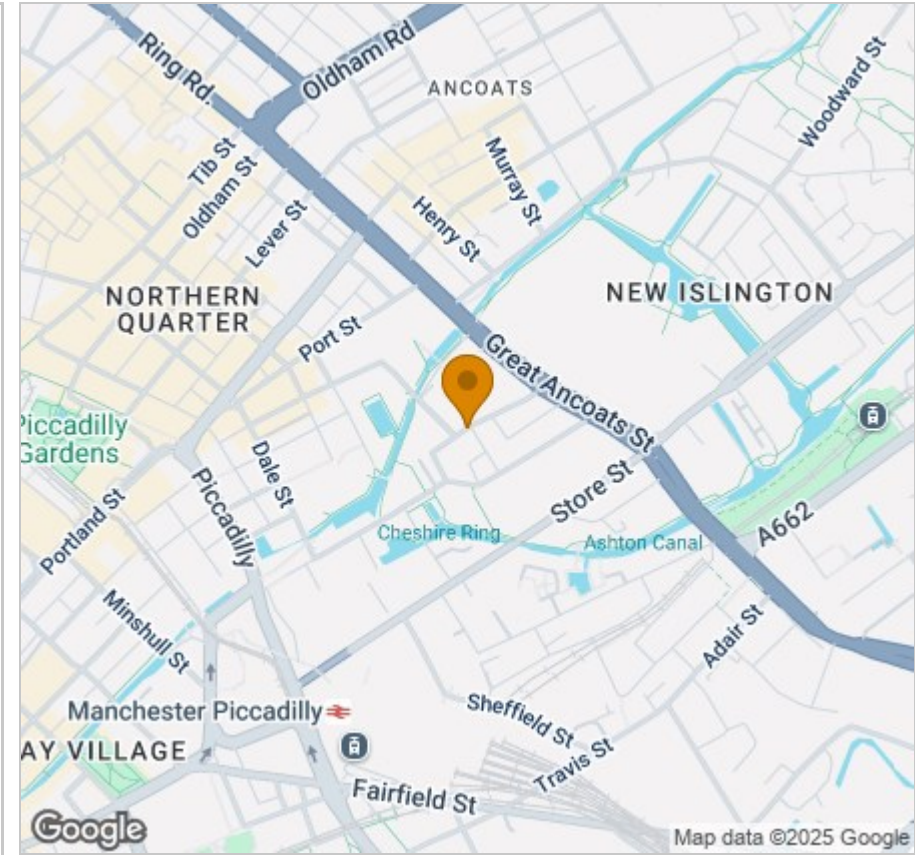




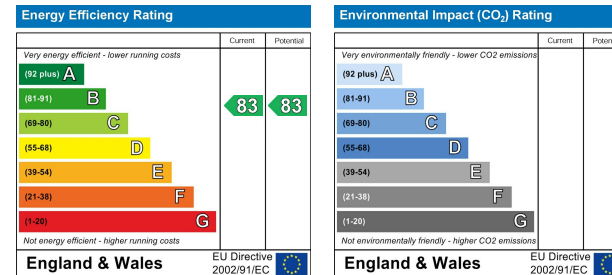
# Floor Plan



# Area Map



# Energy Efficiency Graph



# Viewing

Please contact our Reside Manchester Office on 0161 837 2840 if you wish to arrange a viewing appointment for this property or require further information.

These particulars, whilst believed to be accurate are set out as a general outline only for guidance and do not constitute any part of an offer or contract. Intending purchasers should not rely on them as statements of representation of fact, but must satisfy themselves by inspection or otherwise as to their accuracy. No person in this firm's employment has the authority to make or give any representation or warranty in respect of the property.