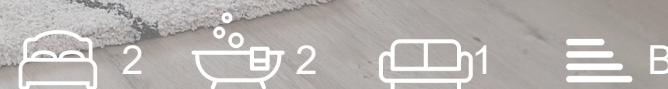


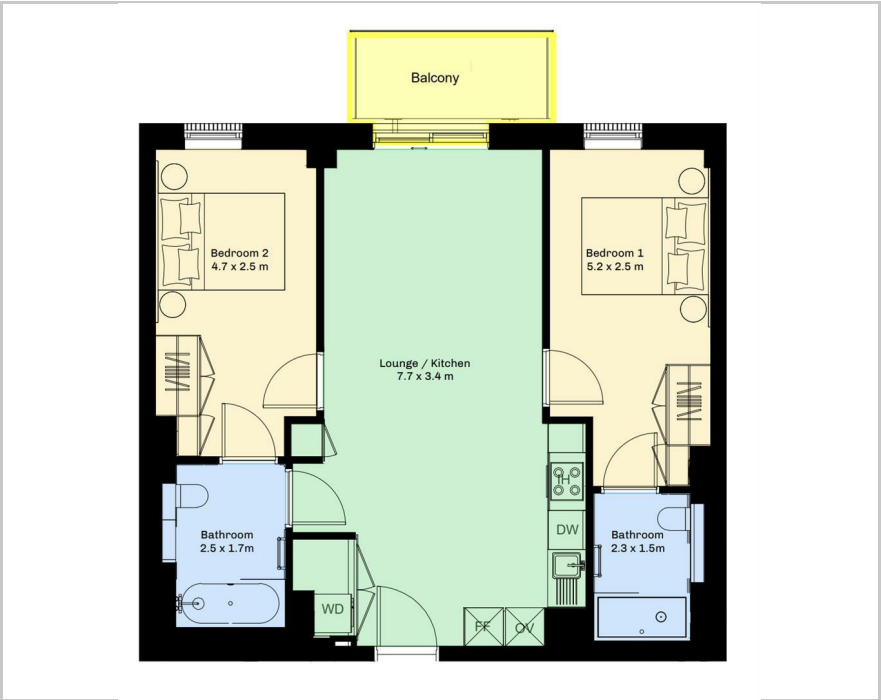


RESIDE
—
MANCHESTER

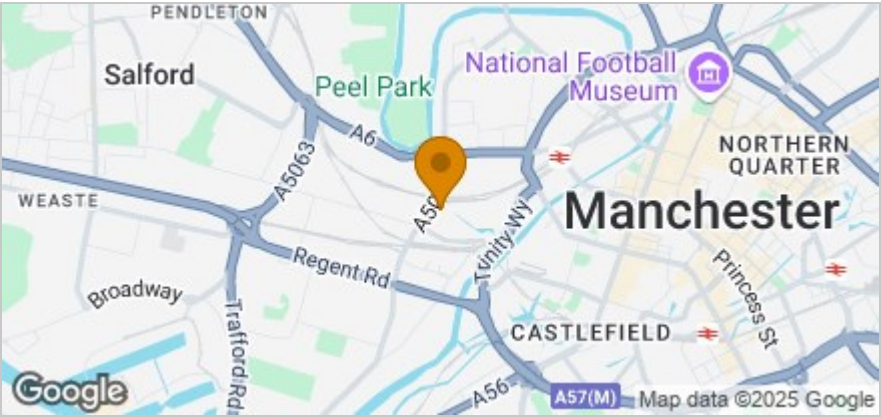
3 Lockside Lane, Salford, M5 4SJ
£1,495 PCM



Floor Plan



Area Map



These particulars, whilst believed to be accurate are set out as a general outline only for guidance and do not constitute any part of an offer or contract. Intending purchasers should not rely on them as statements of representation of fact, but must satisfy themselves by inspection or otherwise as to their accuracy. No person in this firm's employment has the authority to make or give any representation or warranty in respect of the property.

Accommodation

- Two Double Bedrooms, Two Bathrooms
- Spacious Balcony
- Furnished Throughout
- Available Immediately
- Hyperoptic Included In The Rent
- EPC Rating B
- Club Room, Co-Working Space, Parcel Room & Communal Courtyard
- 24 Hour Security
- Pet Friendly - Free Of Charge
- Residents Events

Viewing

Please contact our Reside Manchester Office on 0161 837 2840 if you wish to arrange a viewing appointment for this property or require further information.

Energy Efficiency Graph

