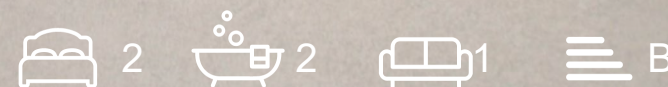




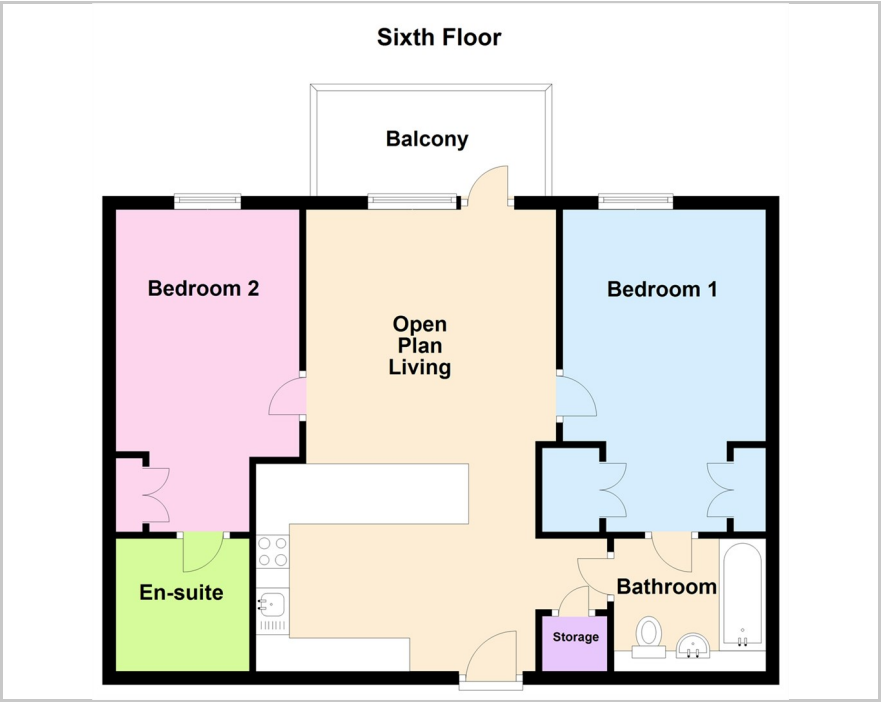
RESIDE  
—  
MANCHESTER

54 Bury Street, Salford, M3 7FW  
£1,400 PCM

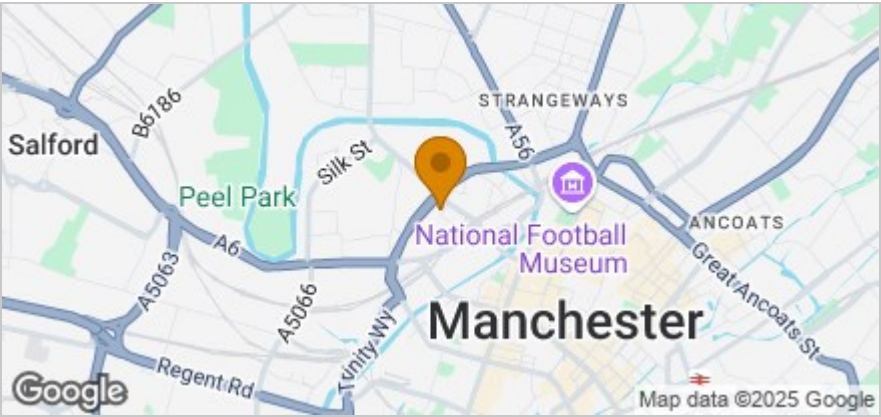




Floor Plan



Area Map



These particulars, whilst believed to be accurate are set out as a general outline only for guidance and do not constitute any part of an offer or contract. Intending purchasers should not rely on them as statements of representation of fact, but must satisfy themselves by inspection or otherwise as to their accuracy. No person in this firm's employment has the authority to make or give any representation or warranty in respect of the property.

Accommodation

- Two Double Bedrooms
- Two Bathrooms
- Furnished Throughout
- 24 Hour Concierge
- Available 25th June 2025
- EPC Rating B
- Private Balcony
- Short walk to Manchester City Centre
- Modern Specification Throughout
- Onsite Gym, Cinema Room, Yoga Studio

Viewing

Please contact our Reside Manchester Office on 0161 837 2840 if you wish to arrange a viewing appointment for this property or require further information.

Energy Efficiency Graph

