



RESIDE
MANCHESTER

366 Castle Irwell Cromwell Road
Salford, M6 6DA

Asking Price £360,000



3



2



1



366 Castle Irwell Cromwell Road
Salford, M6 6DA

Final three bedroom home within the this brand new development in Salford.

Forming part of this new community, the houses offer contemporary and modern design throughout. This house is a semi detached 3 bedroom, two bathroom home with a large open living/kitchen area, spacious north facing rear garden, W/C and car parking included.

With each home, this is a fantastic opportunity to become part of a strong local community with fantastic local amenities and great transport links into Manchester City Centre.

Please contact our sales team on 0161 837 2840 to with any further question or to arrange a viewing.

Castle Irwell
Homes at Castle Irwell benefit from contemporary and modern design connected with the beauty of a riverside setting. Castle Irwell's riverside setting means you're never too far away from wildlife. The area offers landscaped grounds and organic play areas.

- Located on the historic former Manchester Racecourse site.

Freehold
Estate Charge £36 per month (for maintenance of the car parks, parks and grounds and bins).
10 year new build warranty.

Location
One of Castle Irwell's most attractive attributes is that it offers all the benefits of out of town living, yet it is only a 10 minute car journey into Manchester city centre.





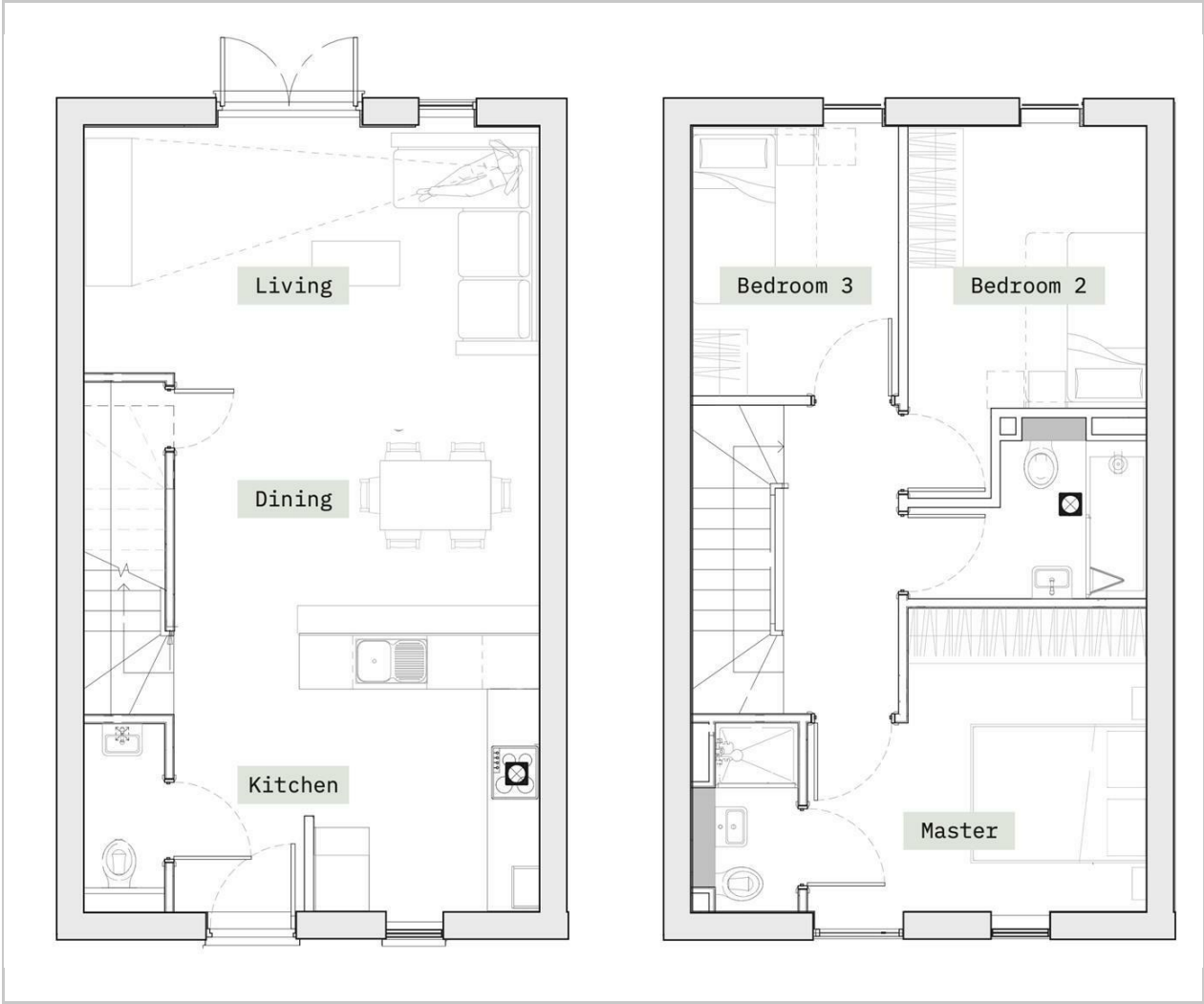
There are numerous public transport offers within walking distance including four bus stops which surround the development. And with the A6 and M602 only minutes away, access to the wider North West region is easy.

Salford Crescent train station is a 25 minute walk with links directly to Blackpool, Preston, Wigan, Rochdale and Leeds.

- Last Remaining Home In Castle Irwell
- Three Bedroom House
- Completed Development
- Owner Occupiers & Investors Welcome
- Located On The Banks Of River Irwell
- Car Parking Included
- Surrounded By Green Space
- Great Location For Families



Floor Plan

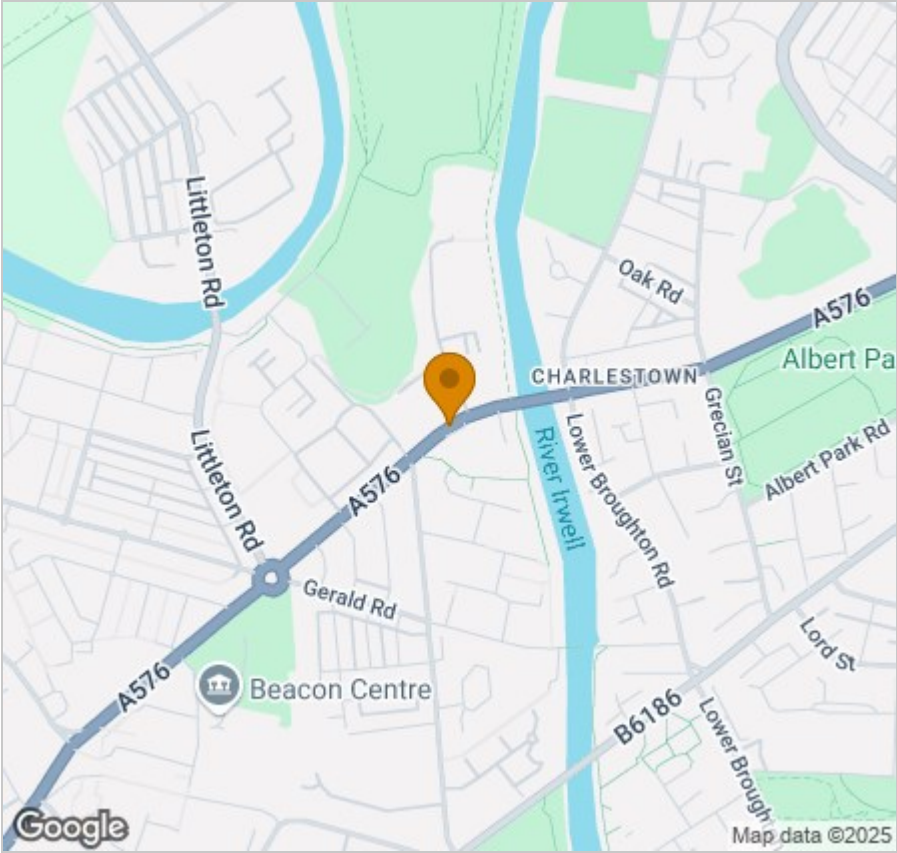


Viewing

Please contact our Reside Manchester Office on 0161 837 2840 if you wish to arrange a viewing appointment for this property or require further information.

These particulars, whilst believed to be accurate are set out as a general outline only for guidance and do not constitute any part of an offer or contract. Intending purchasers should not rely on them as statements of representation of fact, but must satisfy themselves by inspection or otherwise as to their accuracy. No person in this firms employment has the authority to make or give any representation or warranty in respect of the property.

Area Map



Energy Efficiency Graph

