



RESIDE

MANCHESTER

A806 Railings 5 Shale Lane
Salford, M5 4BU

£1,425 PCM



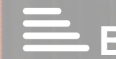
2



2



1



B

A806 Railings 5 Shale Lane

, Salford, M5 4BU

A brand new furnished two double bedroom apartment located in the newly completed Railings building, part of Middlewood Locks development.

The apartment has a high specification throughout and includes; open plan living/kitchen area and spacious balcony.

Middlewood Locks is a development that has the community at its heart. Stationed along the Manchester Canal, the lush green spaces attracts local dog walkers from the city centre.

The development is situated just off Middlewood Street, only a short walk away to Manchester City Centre, where you have access to the transport links along Deansgate and Salford Central.

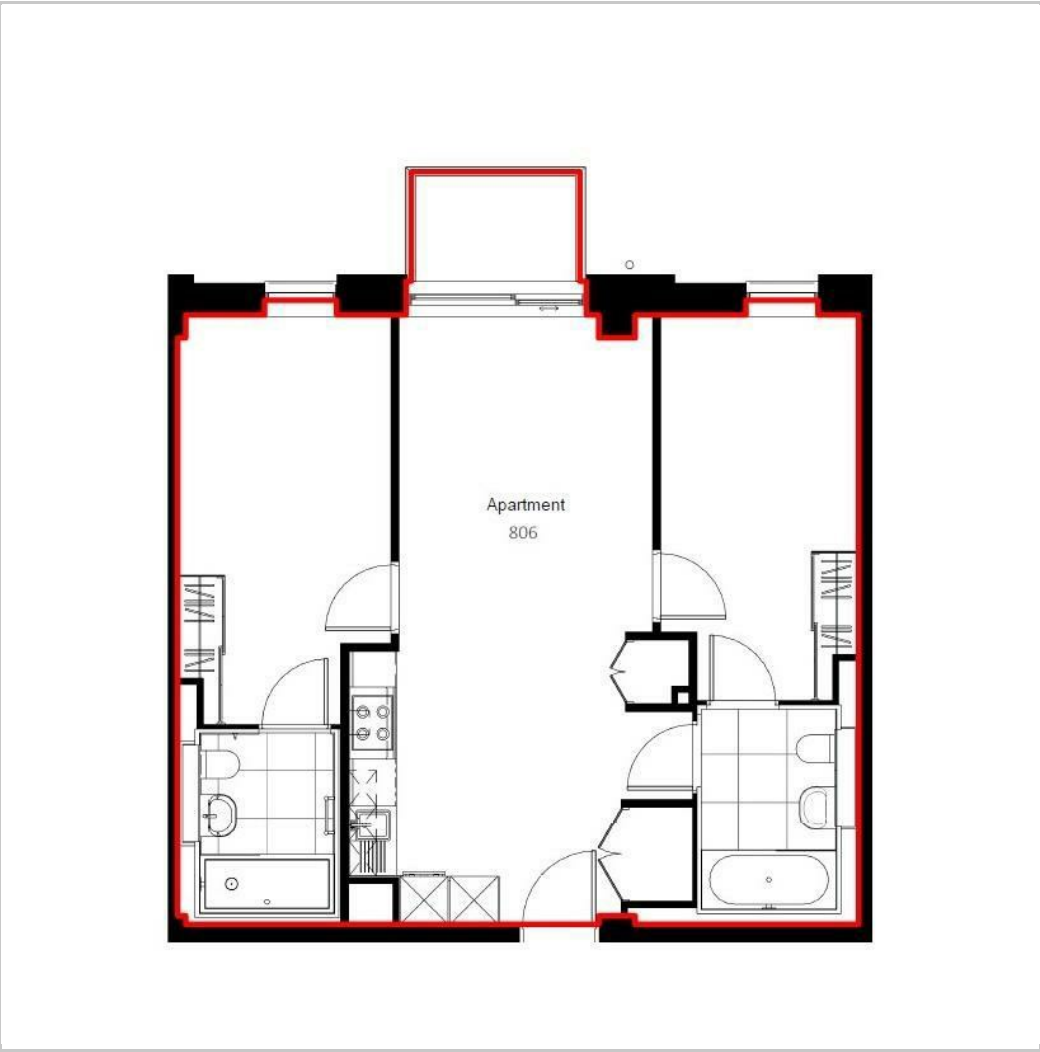
It is available to rent from the 29th of April.

- Brand New Development
- Two Double Bedrooms
- Two Bathrooms
- Furnished Throughout
- Available 29th April
- EPC Rating B
- Spacious Balcony
- Co-op, & Cafe On Your Doorstep
- 10 Minute Walk Into Manchester City Centre





Floor Plan

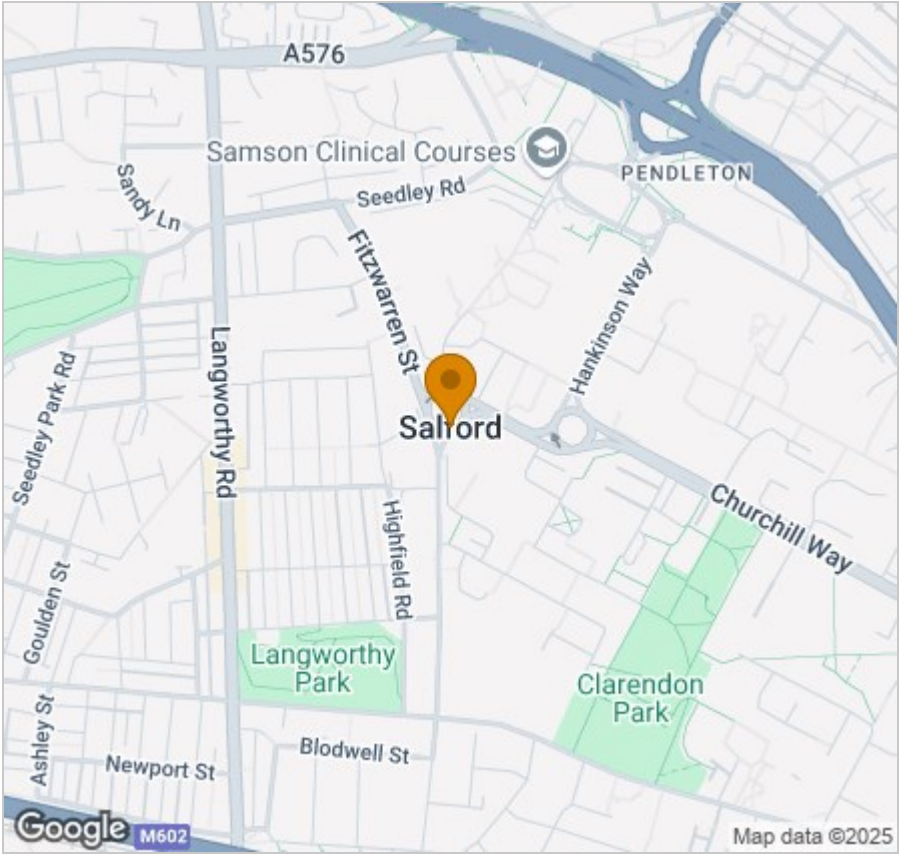


Viewing

Please contact our Reside Manchester Office on 0161 837 2840 if you wish to arrange a viewing appointment for this property or require further information.

These particulars, whilst believed to be accurate are set out as a general outline only for guidance and do not constitute any part of an offer or contract. Intending purchasers should not rely on them as statements of representation of fact, but must satisfy themselves by inspection or otherwise as to their accuracy. No person in this firms employment has the authority to make or give any representation or warranty in respect of the property.

Area Map



Energy Efficiency Graph

