



RESIDE

MANCHESTER



28 New Little Mill 60 Radium Street
Ancoats, Manchester, M4 6GH

Asking Price £265,000



28 New Little Mill 60 Radium Street

Ancoats, Manchester, M4 6GH

Historic listed mill conversion located in the vibrant Ancoats.

Nestled on the second floor, the apartment radiates charm, highlighted by floor to ceiling windows that flood the space with abundant natural light. Featuring a generously sized open-plan living and kitchen area, a comfortable double bedroom, and a bathroom, this apartment offers a cozy yet stylish living experience.

Residents of New Little Mill offers a strong, tight-knit community which makes it unique in Manchester. The development benefits from on-site concierge and an internal courtyard.

New Little Mill

Located on the corner of Bengal Street and Jersey Street in Ancoats, Little Mill was constructed by the Murray Brothers following the completion of Murrays Mills, in around 1822, and originally linked to New Mill by an underground tunnel. Little Mill was the first recording of a cotton mill run by mains electric. Having been destroyed by fire around 1908, the mill was rebuilt and renamed "New Little Mill".





The Tour

28 New Little Mill is located on the second floor. Entering via a steel front door with satin stainless steel ironmongery you are greeted by a spacious open plan living/kitchen area featuring 18mm engineered oak flooring in native oak throughout and exposed brickwork with large floor to ceiling windows in the lounge. Fully fitted Mackintosh kitchen incorporating Bellato grey base units with light grey wall units and Bellato grey 20mm laminate countertop. Grey splashback tiles, Hansgrohe swivel taps and under wall unit lighting. Integrated appliances including Neff stainless steel electric oven, with a black glass hob, CDA fridge, freezer and CDA dishwasher.

The bedroom is fully carpeted, offering floor to ceiling windows and exposed brickwork, LED downlights, a built in wardrobes and TV and satellite points.

Three piece bathroom suite in white with a walk in shower, duravit toilet and sink offering solid oak countertop with a large glass mirror and porcelain tiled flooring.

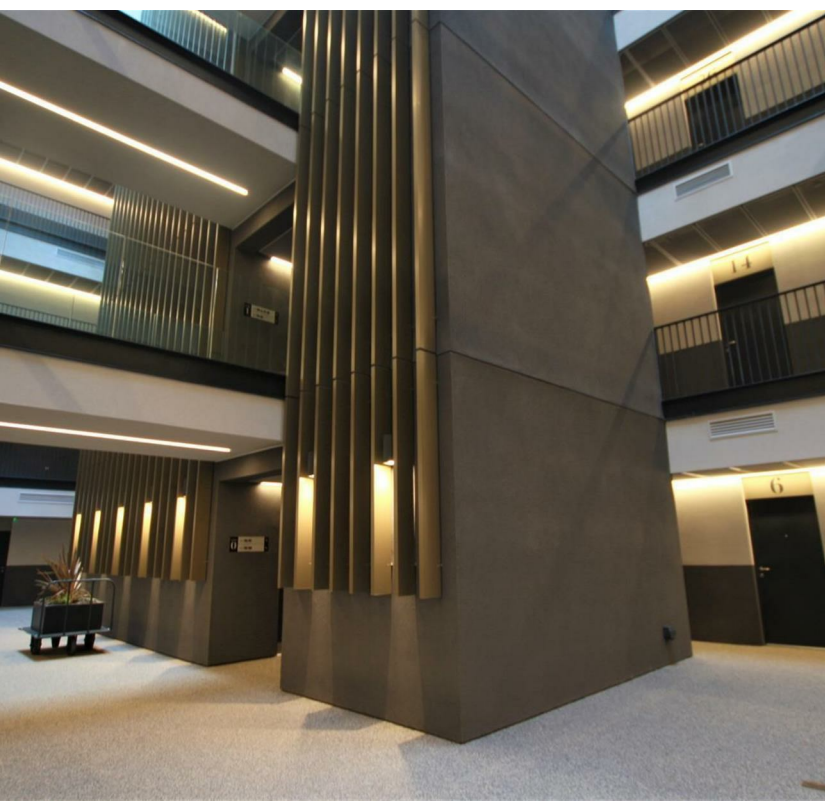
The Area

New Little Mill is located in the heart on Ancoats, surrounded by many independent businesses including Mana, Pollen, Rudys & general store. Across the road from New Little Mill is the Rochdale Canal and the ever popular Ancoats Marina perfect for a short walk or lunch spot on a summers day. Ancoats is also extremely close to the Northern Quarter & Piccadilly Train Station all within a 10-15 minute walk away.

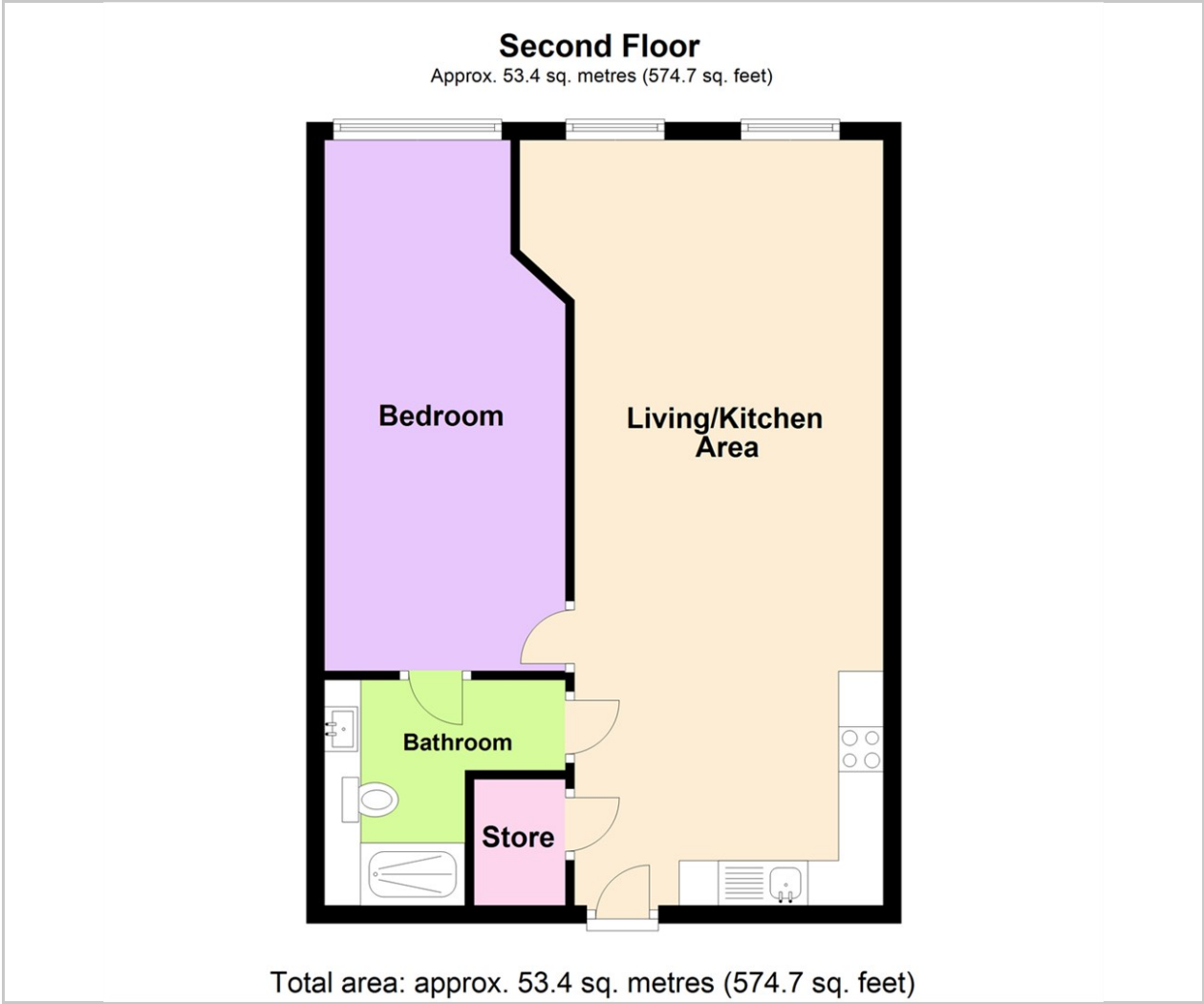
Lease Information

250 year lease from September 2020
Service Charge: £2,199p.a
Ground Rent: £200p.a
5 year premier guarantee warranty
Management Company: Rendal & Rittner

- One Double Bedroom
- One Bathroom
- Grade II Listed Building
- Original Features Throughout
- Owner Occupied
- EPC Rating C
- First Ever Electric Powered Mill In The Country
- Located In The Heart Of Ancoats
- On-Site Concierge
- Secure Bike Storage



Floor Plan

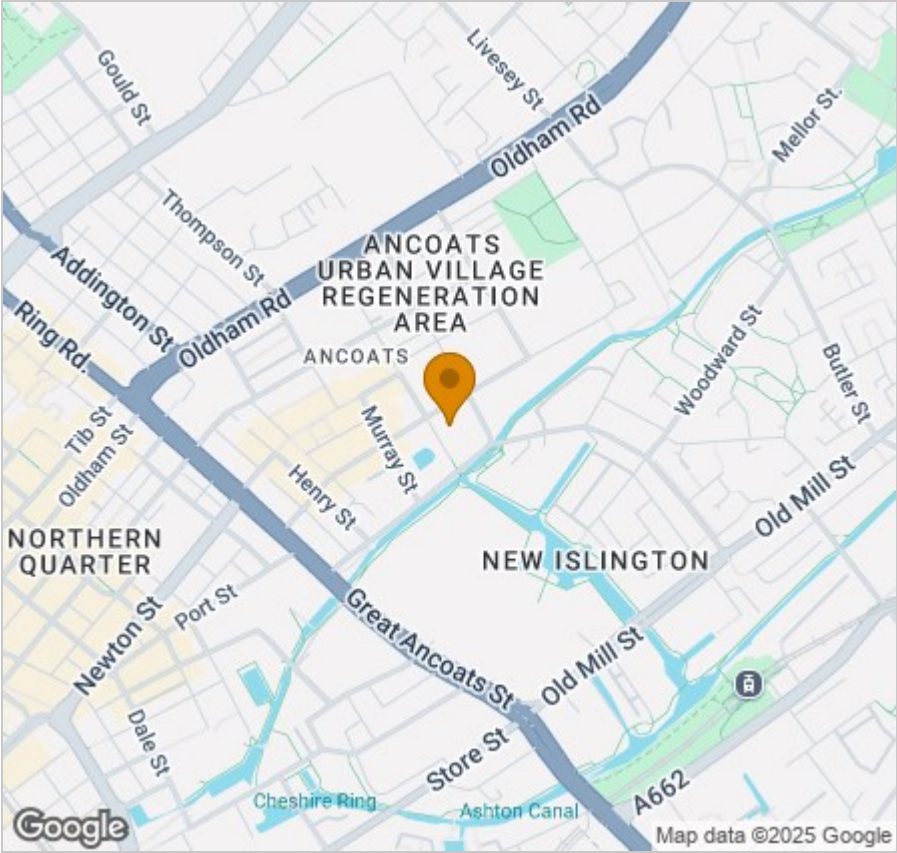


Viewing

Please contact our Reside Manchester Office on 0161 837 2840 if you wish to arrange a viewing appointment for this property or require further information.

These particulars, whilst believed to be accurate are set out as a general outline only for guidance and do not constitute any part of an offer or contract. Intending purchasers should not rely on them as statements of representation of fact, but must satisfy themselves by inspection or otherwise as to their accuracy. No person in this firms employment has the authority to make or give any representation or warranty in respect of the property.

Area Map



Energy Efficiency Graph

