



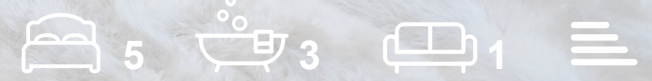
RESIDE

MANCHESTER



St. John Street
Manchester, M3 4DS

£15,000 PCM



13 St. John Street

Manchester, M3 4DS

This beautifully restored, four-story Georgian townhouse offers approximately c3500 square feet of luxurious living space.

As one of Manchester's finest homes, it is located on historic St John Street, where the original houses date back to around 1785. These townhouses served as residential dwellings until the mid-19th century. The St John Street townhouses have all now been converted back into some of the finest homes in the City.

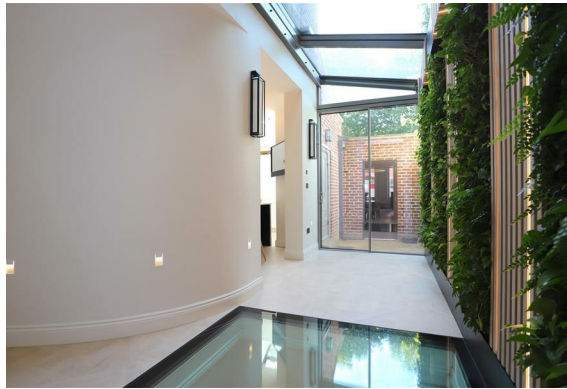
The property features five bedrooms, a spacious living room, dining area, and a state of the art kitchen. The basement includes a cinema room, study area, and gym. A loft conversion adds even more space. Every detail has been meticulously crafted to the highest standards.

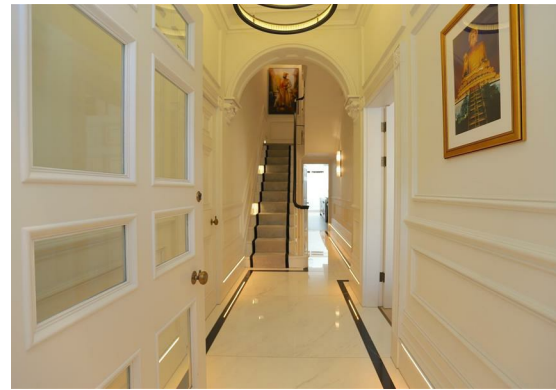
Furnished to a high standard and available for immediate rent.

History

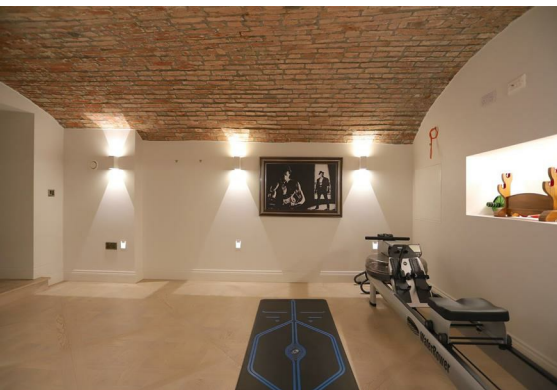
The special architectural and historic interest of St John Street townhouses as a whole is recognised by their Grade II Listed designation. The significance of the buildings primarily lies in their early date of construction and their group value on St John Street. The first townhouse is thought to have been constructed on the south side of St John Street at around a date of 1785. The street forms the main focus and reason for the designation of the St John Street Conservation Area. The houses are thought to have been used as residential dwellings up until around the 1850's and more recently as medical consulting rooms.

- Five Double Bedrooms
- Three Bathrooms
- Furnished To A High Specification





- Cinema Room, Gym Area, Study Area
- Available Immediately
- Circa 3500 sqft
- Four Storey Georgian Townhouse
- Loft Room
- EPC Rating TBC
- Central Location



Floor Plan

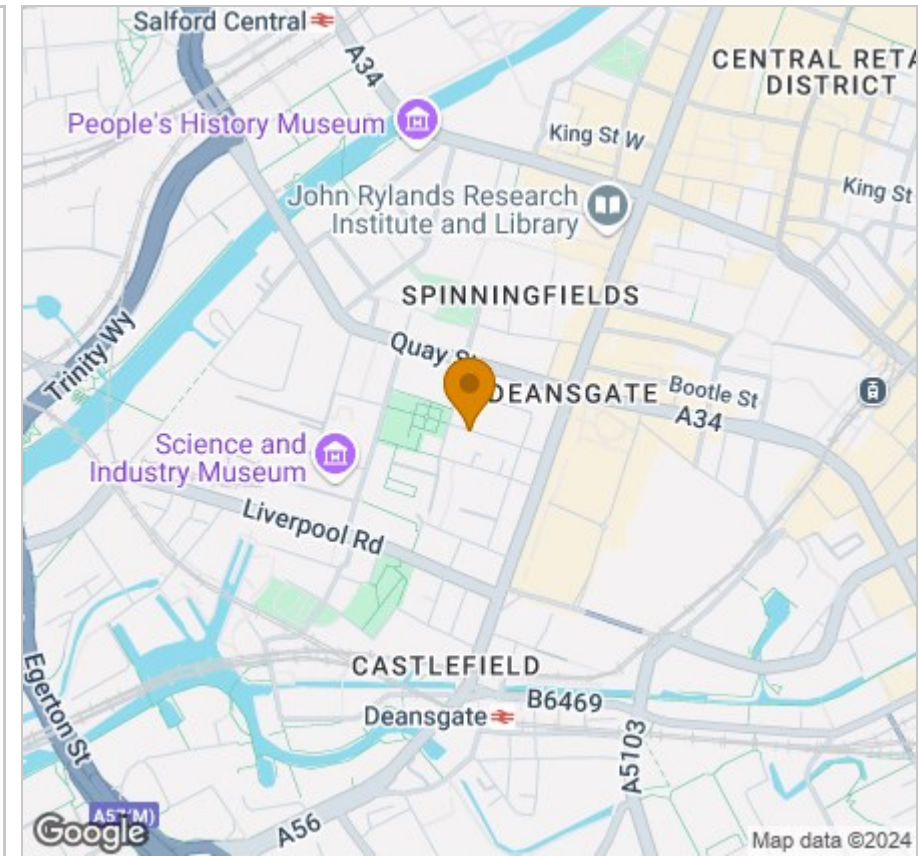


Viewing

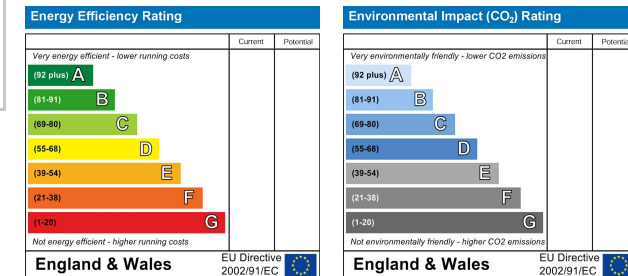
Please contact our Reside Manchester Office on 0161 837 2840 if you wish to arrange a viewing appointment for this property or require further information.

These particulars, whilst believed to be accurate are set out as a general outline only for guidance and do not constitute any part of an offer or contract. Intending purchasers should not rely on them as statements of representation of fact, but must satisfy themselves by inspection or otherwise as to their accuracy. No person in this firm's employment has the authority to make or give any representation or warranty in respect of the property.

Area Map



Energy Efficiency Graph



249 Deansgate, Manchester, Greater Manchester, M3 4EN

Tel: 0161 837 2840 Email: info@residemanchester.com www.residemanchester.com