



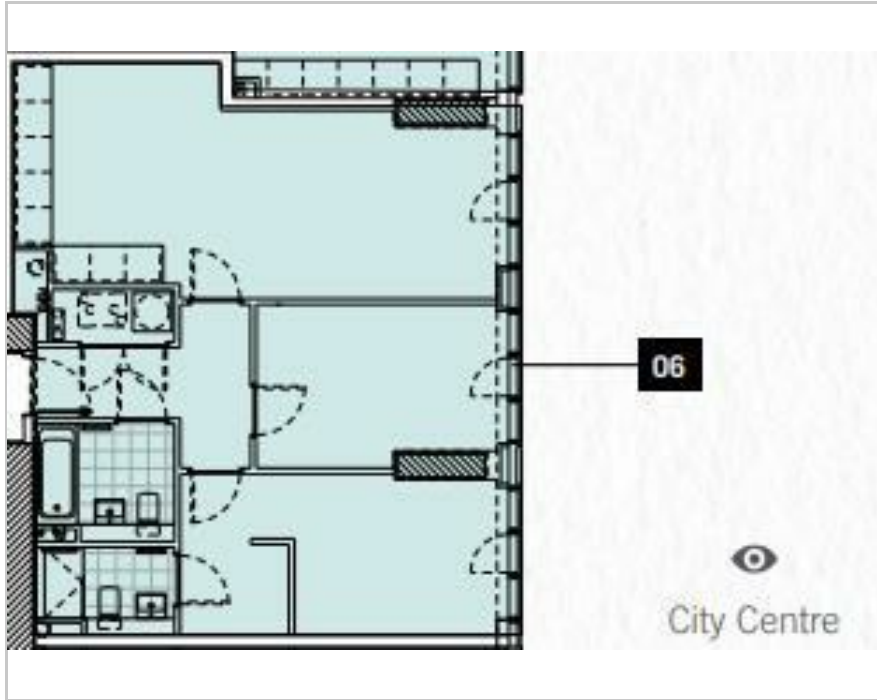
RESIDE

—
MANCHESTER

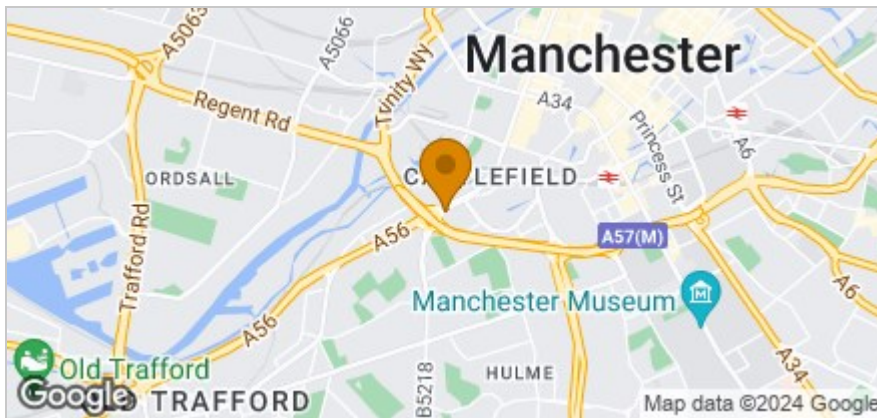
141 Chester Road, Manchester, M15 4ZG
£2,100 PCM



Floor Plan



Area Map



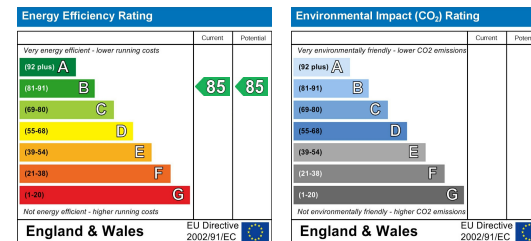
Accommodation

- Luxury Development
- Two Double Bedrooms
- Two Luxurious Bathrooms
- Secure Allocated Parking Included
- Available from the 2nd of September 2024
- EPC Rating B
- Communal Roof Terrace
- 44th Floor Gym & Yoga Studio *opening April*
- Swimming Pool with Amazing views *Opening April*
- 24 Hour Concierge

Viewing

Please contact our Reside Manchester Office on 0161 837 2840 if you wish to arrange a viewing appointment for this property or require further information.

Energy Efficiency Graph



These particulars, whilst believed to be accurate are set out as a general outline only for guidance and do not constitute any part of an offer or contract. Intending purchasers should not rely on them as statements of representation of fact, but must satisfy themselves by inspection or otherwise as to their accuracy. No person in this firm's employment has the authority to make or give any representation or warranty in respect of the property.

249 Deansgate, Manchester, Greater Manchester, M3 4EN

Tel: 0161 837 2840 Email: info@residemanchester.com www.residemanchester.com