



RESIDE
MANCHESTER



10 Lower Downs Court
18a The Downs, Altrincham, WA14 2PU

Asking Price £650,000



3



2



1



B

10 Lower Downs Court

18a The Downs, Altrincham, WA14 2PU

The Downs Quarter, situated at the core of Altrincham town center, is a highly anticipated development. Its prime location ensures close proximity to a wealth of offerings in Altrincham, encompassing schools, restaurants, parks, transportation links, and local amenities.

4 luxurious Townhouses within The Downs Quarter, a secure and private development that has now completed and available to view.

This 3 storey Townhouse offers circa 1,159 sq/ft accommodation comprising 3 double bedrooms, the primary bedroom offering a large dressing room, two bathrooms, a W/C, large open plan living/kitchen and a private garden.

Parking is also an option, with additional costs applicable and subject to availability.

For further details, please contact us at 01618372840.

The Location

Altrincham is an affluent market town. It boasts a thriving community, offering a selection of award-winning retail, dining, drinking and leisure facilities, as well as several outstanding primary and secondary schools. It's location close to both the cosmopolitan city of Manchester and charming Cheshire countryside adds to its appeal, with Altrincham included in The Sunday Times Best Places to Live 2022. It is not the first time the town has received this much coveted accolade, meaning its popularity remains year on year.

"a melting pot of culture for everyone to enjoy"
www.visitaltrincham.com





The Downs Quarter

35 contemporary one, two and three bedroom apartments, as well as 4 stunning three bedroom townhouses. Car parking spaces will be available to purchase too.

A total of 39 properties will be built and 46 car parking spaces available, providing a rare opportunity to purchase a high quality, new build home in this much sought-after modern market town.

In addition to the residential properties, The Downs Quarter will offer one stand-alone commercial unit, plus four live/work houses, creating a vibrant development to work and live in one of the UK's most desirable town centres.

About McGoff / Villafont Homes

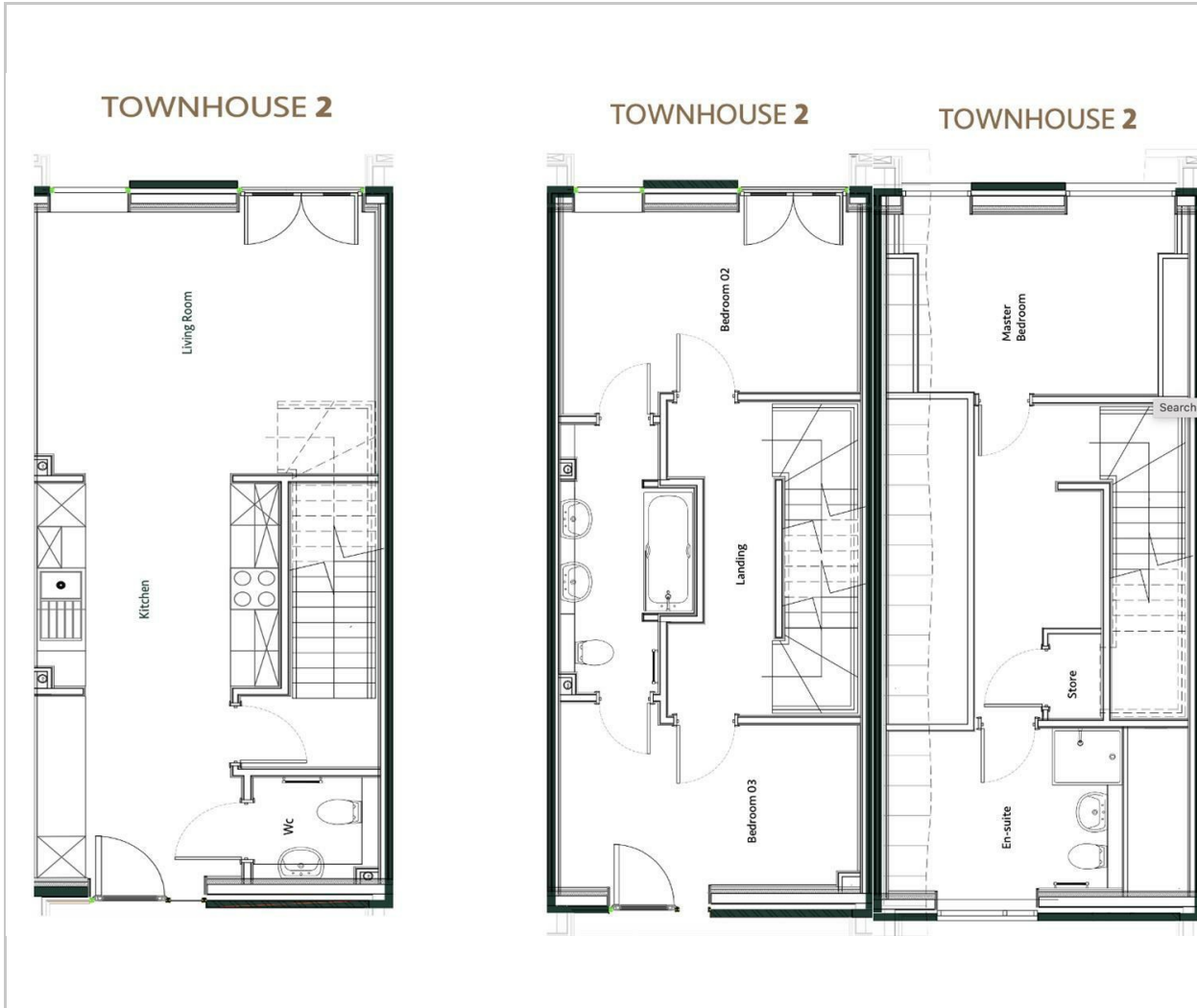
The McGoff Group is an Altrincham-based, multi award-winning company with an impressive heritage spanning 48 years. Privately owned, the Group incorporates a multi-faceted collection of like-minded businesses, with construction retained at the core, and offers a holistic range of services; acquire, design, build, operate and maintain. Villafont Homes is the residential arm of the McGoff Group.



A leading North West developer, Villafont is renowned for its design, quality, style and superior specification. The company is committed to delivering sophisticated homes, priding itself on its high build standards and immaculate finishes. Each and every Villafont home is bespoke, built with care, boasts luxurious touches and located in a desirable residential location.

- Three Storey Townhouses
- Located In The Heart Of Altrincham
- Brand New Development
- Private Garden
- Three Double Bedrooms, Two Bathrooms
- EPC Rating B
- Open Plan Living/Kitchen Area
- Guest W/C
- Underground Parking Available At £10,000 Per Space
- Now Completed

Floor Plan



Viewing

Please contact our Reside Manchester Office on 0161 837 2840 if you wish to arrange a viewing appointment for this property or require further information.

These particulars, whilst believed to be accurate are set out as a general outline only for guidance and do not constitute any part of an offer or contract. Intending purchasers should not rely on them as statements of representation of fact, but must satisfy themselves by inspection or otherwise as to their accuracy. No person in this firm's employment has the authority to make or give any representation or warranty in respect of the property.

249 Deansgate, Manchester, Greater Manchester, M3 4EN

Tel: 0161 837 2840 Email: info@residemanchester.com www.residemanchester.com

Area Map



Energy Efficiency Graph

