



RESIDE

MANCHESTER



615 Bridgewater Point
Worrall Street, Salford, M5 4YB

£1,500 PCM



615 Bridgewater Point

Worrall Street, Salford, M5 4YB

Impressive three bedroom apartment situated on the 6th floor of this contemporary development.

The apartment also features a communal terrace area that can be accessed directly from a nearby corridor, providing residents with a great outdoor space to relax and enjoy the surroundings.

The apartment is located in Salford and is just a 10-minute walk away from the bustling Manchester City Centre, making it a perfect location for professionals who work in the city.

Furnished, available to rent immediately with 1 allocated parking space included.

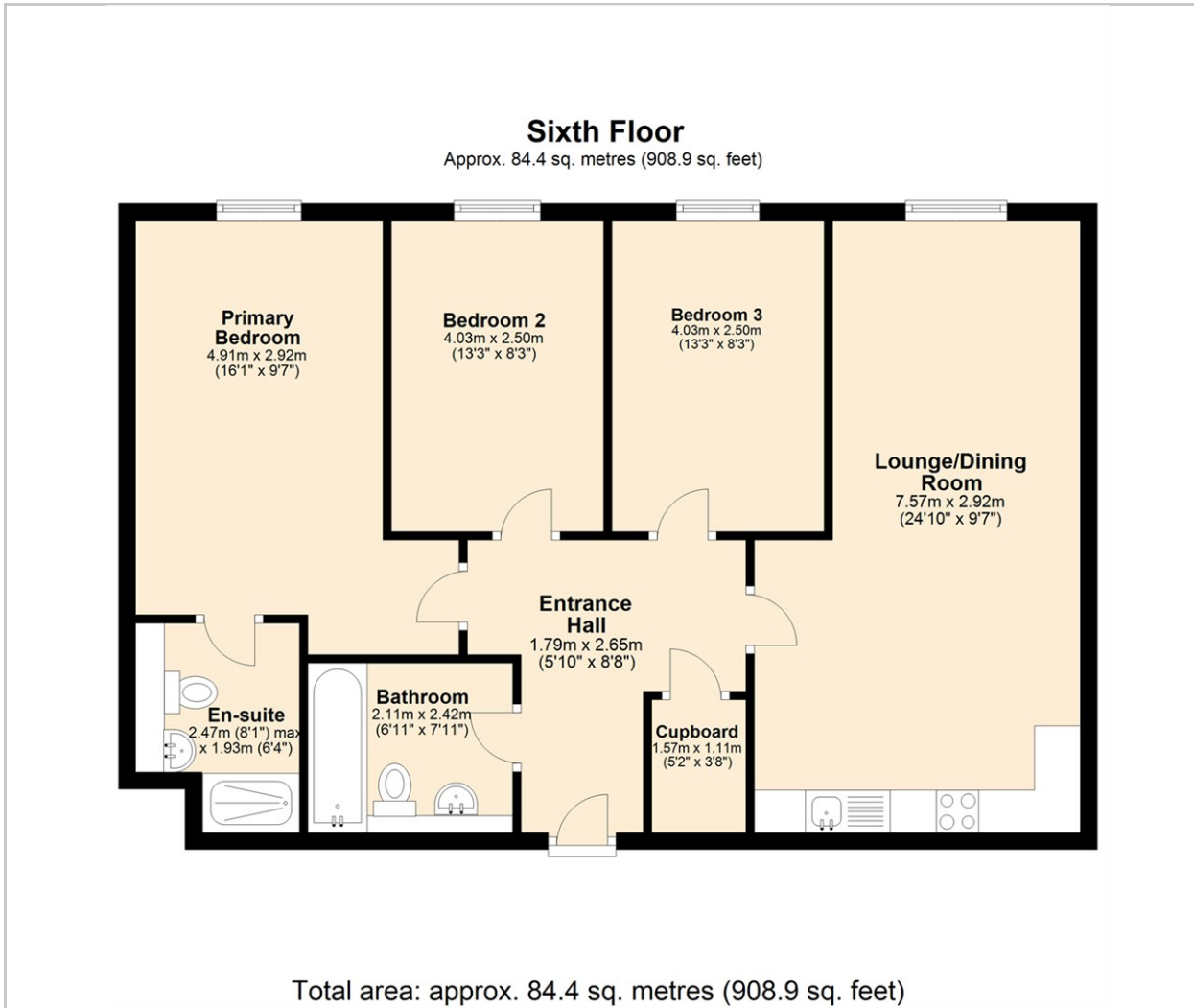
This property does not have an HMO Licence.

- Three Double Bedrooms
- 6th Floor Apartment
- Communal Roof Terrace
- Communal Garden Space
- Available Immediately
- EPC Rating C
- Furnished Throughout
- Allocated Secure Parking Included
- Floor-Ceiling Windows
- Close To Cornbrook Tram Station





Floor Plan



Viewing

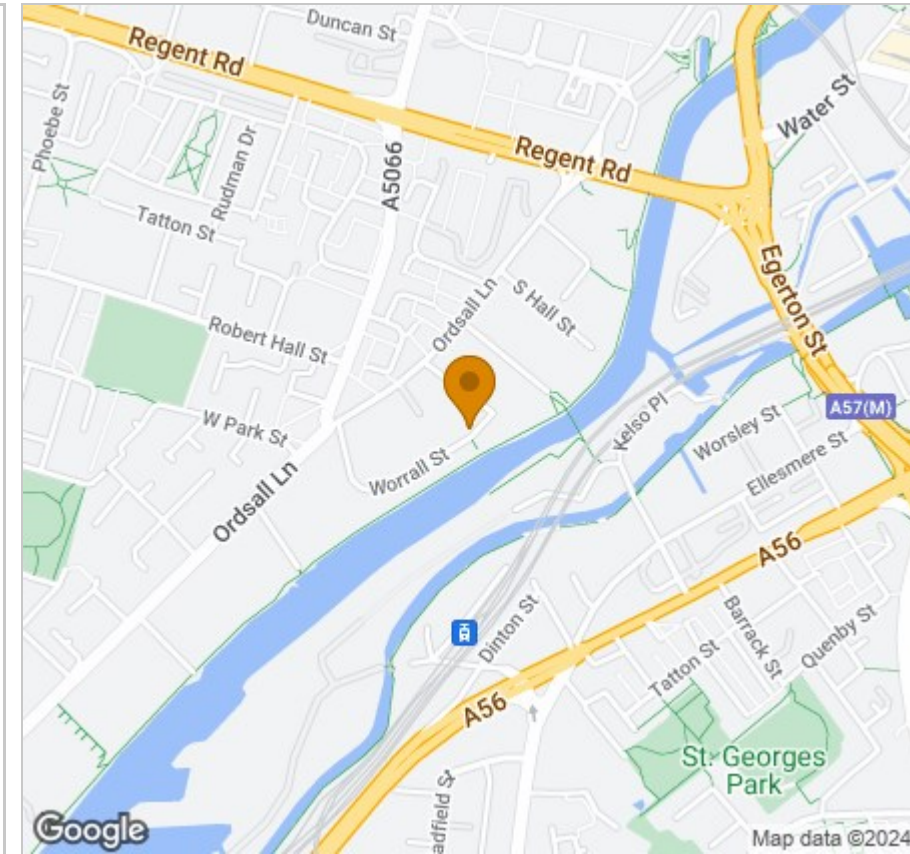
Please contact our Reside Manchester Office on 0161 837 2840 if you wish to arrange a viewing appointment for this property or require further information.

These particulars, whilst believed to be accurate are set out as a general outline only for guidance and do not constitute any part of an offer or contract. Intending purchasers should not rely on them as statements of representation of fact, but must satisfy themselves by inspection or otherwise as to their accuracy. No person in this firm's employment has the authority to make or give any representation or warranty in respect of the property.

249 Deansgate, Manchester, Greater Manchester, M3 4EN

Tel: 0161 837 2840 Email: info@residemanchester.com www.residemanchester.com

Area Map



Energy Efficiency Graph

