



# RESIDE

MANCHESTER



The Turing Penthouse East Tower  
Deansgate Square, 9 Owen Street, M15 4UG

**Asking Price £2,500,000**



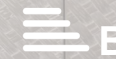
3



3



2



B

# The Turing Penthouse East Tower

Deansgate Square, 9 Owen Street, M15 4UG

Built and developed by Renaker, and designed by renowned architects SimpsonHaugh, Deansgate Square is Manchester's premier landmark development. Located in New Jackson, a world-class skyscraper district at the southern gateway to Manchester city centre, all four towers boast unparalleled views across the city and beyond.

This duplex penthouse occupies the top floors boasting exceptional views of the university and Deansgate Square. With over 3,100 sq ft of living space, the penthouse comprises three double bedrooms, each with en-suites that are equipped with Duravit sanitary ware. There are three double bedrooms with a dressing area (master bedroom), an open plan living and kitchen area, a viewing gallery, a study, in addition to a separate WC for guests. Throughout the Penthouse, there is cooling/air conditioning, as well as electric dimout blinds, and matching walnut veneer entrance and internal doors. The penthouse has been finished to a truly exquisite standard.

Deansgate Square also offers exceptional health and wellness resident-only facilities with The Club, at 50,000 sq ft. Residents can enjoy a 20m pool, spin and yoga studios, state-of-the-art gym, as well as lounges and an extensive rooftop terrace. The Concierge and Business gallery also offers a variety of workspaces including bookable private suites, which are equally perfect for entertaining, dining or gaming with friends in the evenings and weekends.





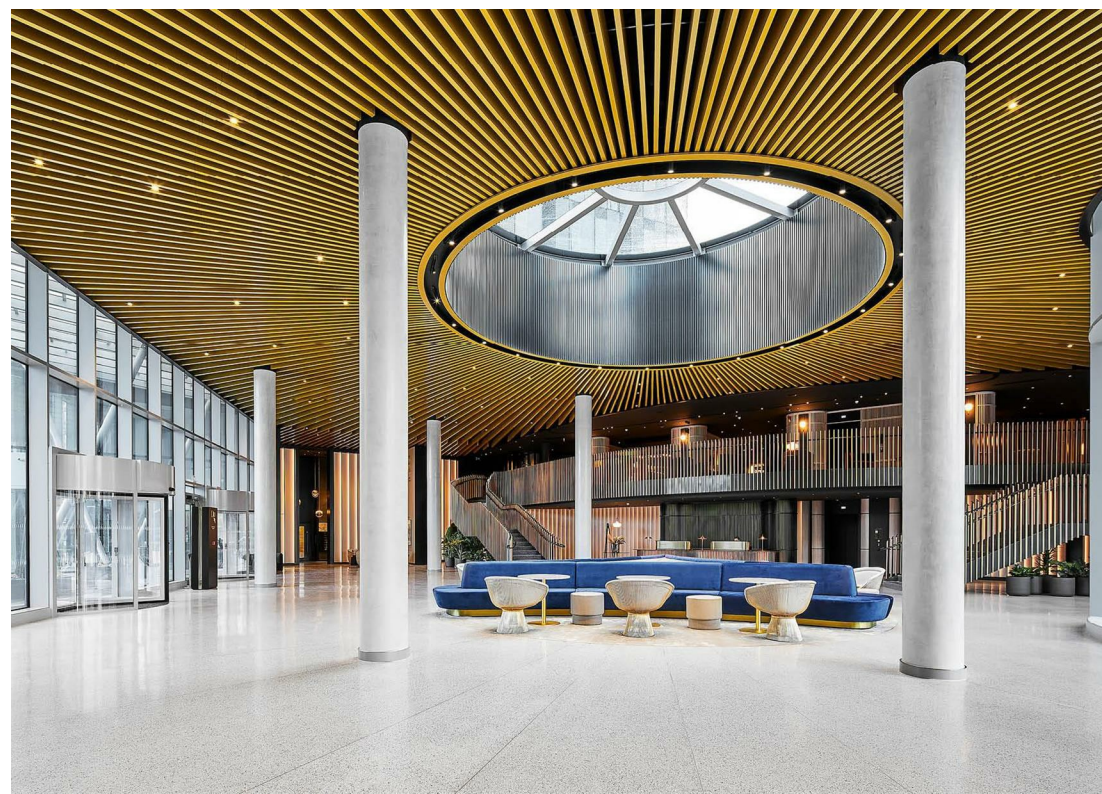
### Health & Wellness

Deansgate Square provides residents with an idyllic space to keep active and to unwind. The Club features a 20m pool, gym, spin studio, yoga studio, treatment room, sports hall & more. The residents can also enjoy the lounges, tea room, concierge and rooftop garden.

### Disclaimer

\*Include disclaimer that show home images are intended for illustrative purposes only and are to be taken as general guidance. Penthouses to not come dressed as standard.

- 3,125 sq ft of open-plan living space set over two floors
- Unparalleled views across the city
- Electric dimout roller blinds throughout
- 92,000 sq ft of unrivaled amenities space
- SieMatic kitchens with integrated Siemens appliances plus warming drawer
- Three spacious bedrooms each with en-suite including underfloor heating
- Bespoke fitted wardrobes with drawers to master bedroom
- Freestanding bath to the master en-suite
- The Club - boasting 4,300sq ft gym, full sized sports hall, spin and yoga studios, 20m pool, treatment rooms
- Vibrant mix of on-site commercial operators; including a general store, florist, dental clinic, cookery school and more.



# Floor Plan

### Penthouse

THE TURING

OVERALL:

290.35 M<sup>2</sup> | 3125 FT<sup>2</sup>

SIZES	METRIC (M)	IMPERIAL
LIVING / KITCHEN	10.76 x 15.64	35'3" x 51'4"
STUDY / OFFICE	3.01 x 4.91	9'11" x 16'1"
BEDROOM 1	5.13 x 4.41	16'10" x 14'5"
BEDROOM 2	3.49 x 5.52	11'5" x 18'1"
VIEWING ROOM	2.88 x 3.96	9'5" x 13'0"
BEDROOM 3	3.32 x 6.55	10'11" x 21'5"

Dimensions are taken from the points indicated



Penthouses do not come dressed, for illustrative purposes only.





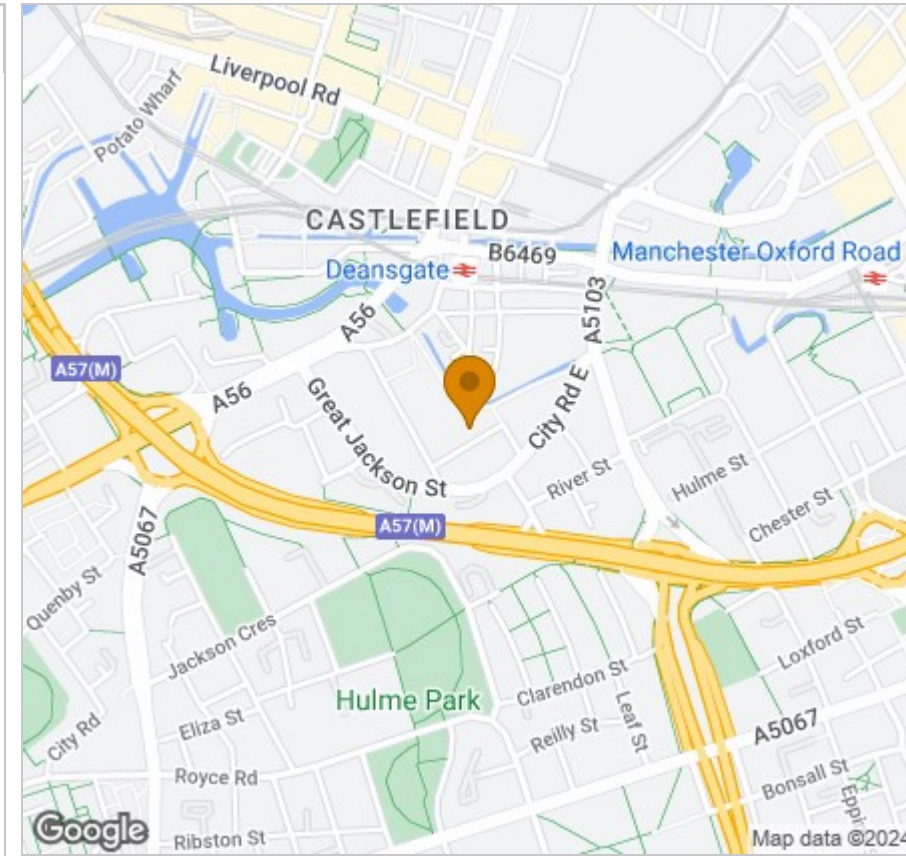
FLOOR 51



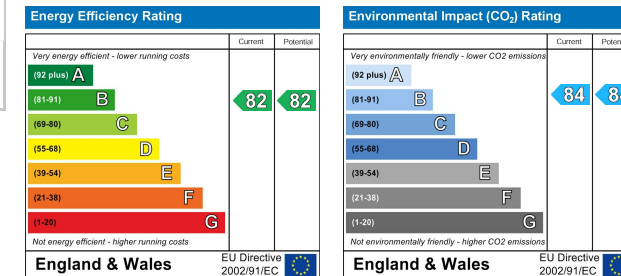
FLOOR 50

Floor plans shown for Deansgate Square are with approximate dimensions only. Each layout size may vary. All measurements may vary within a tolerance of 5% and are to the maximum room dimensions. The dimensions are not intended for use for carpets/flooring, tiles, appliances or furniture. Kitchen layout is indicative only. Please see Sales Consultant for further information.

# Area Map



# Energy Efficiency Graph



# Viewing

Please contact our Reside Manchester Office on 0161 837 2840 if you wish to arrange a viewing appointment for this property or require further information.

These particulars, whilst believed to be accurate are set out as a general outline only for guidance and do not constitute any part of an offer or contract. Intending purchasers should not rely on them as statements of representation of fact, but must satisfy themselves by inspection or otherwise as to their accuracy. No person in this firm's employment has the authority to make or give any representation or warranty in respect of the property.

249 Deansgate, Manchester, Greater Manchester, M3 4EN

Tel: 0161 837 2840 Email: info@residemanchester.com www.residemanchester.com