



RESIDE

—
MANCHESTER



1409 One Port Street
Northern Quarter, Manchester, M1 2EG

Asking Price £483,000



2



2



1



1409 One Port Street

Northern Quarter, Manchester, M1 2EG

Introducing the most exquisite standards of luxury living to Manchester's very own cultural powerhouse, One Port Street will revolutionise the build-to-rent market in the Northern Quarter.

Soon to become Manchester's most desired development, One Port Street stands in a league of its own. A first-class living experience in the city's creative capital, residents will have access to the finest amenities on the market, pushing the boundaries of resident experience like never before.

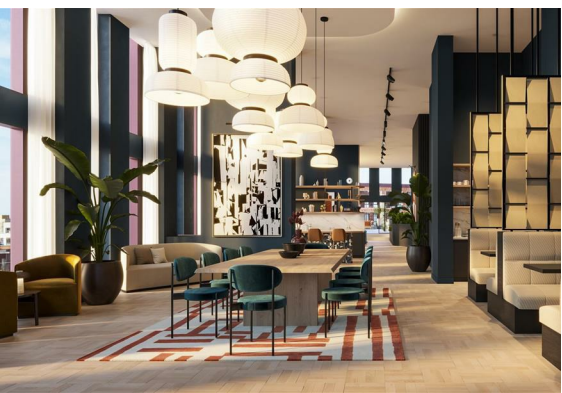
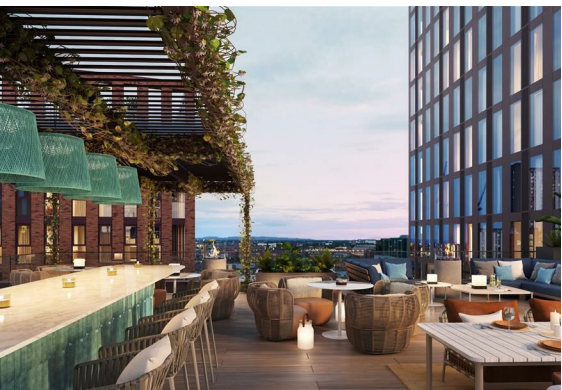
Development overview:

- 32 storeys, with spectacular views across the city
- 477 luxury one, two and three-bedroom apartments
- Resident lounges and meeting spaces
- Sustainability features including electric charging capacity and sedum green roof
- 22,000 SQFT of outdoor space comprised of courtyards and gardens
- Admirable interiors such as the grand lobby centred around a fire pit to create a sense of arrival.
- Wellbeing amenities including a commercial size state of the art gym and 2,000 sqft swimming pool and thermal baths secluded away underground with skylights offering natural lighting whilst maintaining privacy.
- Overlooking the northern Quarts, the 7th floor is dedicated to luxury amenity space, including Paganini's rooftop terrace, private lounges, private dining areas for entertainment.

Investment overview:

- Completing Q4 2025 (September – December)
- 6% rental yields predicted
- 12% capital growth predicted over the build period
- Developed, operated, and managed by Select Property
- End-to-end support for hassle-free investment





Interiors to admire:

One Port Street's grand lobby is centred around a 360° firepit for a sense of arrival every day. Re-defining work-life balance, cosy seating and private booths create a casual atmosphere for working, relaxing and socialising. Vivid splashes of colour and contemporary art invite and inspire residents from all walks of life.

Amenities:

Luxury extends through the entire building, with a 2,000 square foot luxury swimming pool and a relaxing spa pool.

A secluded retreat away from the demands of city life, skylight windows create tranquil natural lighting whilst maintaining privacy.

Overlooking the vibrant Northern Quarter, the 7th floor is dedicated to luxury amenity space, including Paganini's rooftop terrace, a private residents lounge, innovative co-working space with study booths, and private dining areas for residents to delight guests.

Two-bedroom apartment case study:

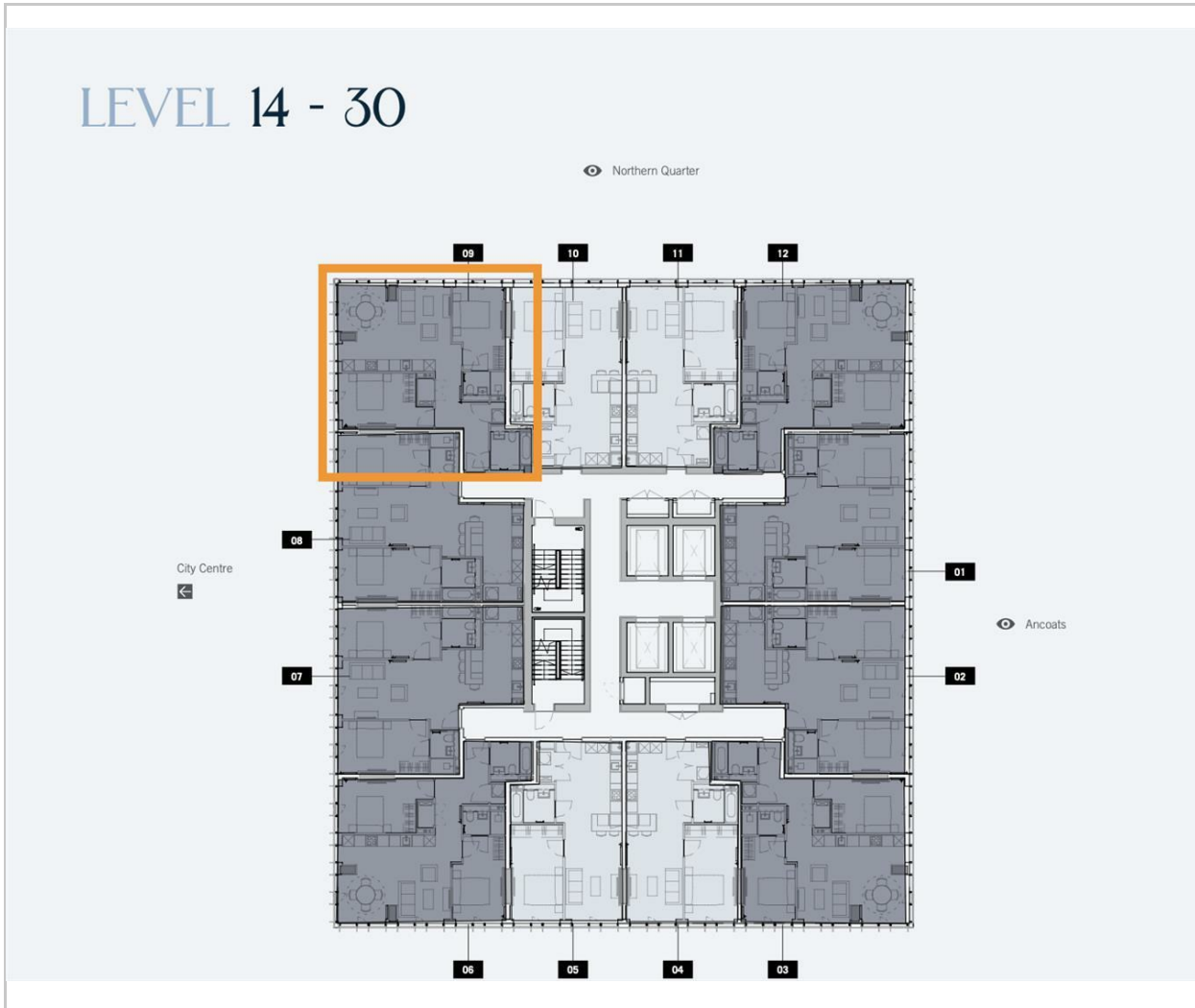
Two-bedroom apartments are among the best investment opportunities in One Port Street as they appeal to the widest segment of the rental market.

Since the pandemic, priorities have shifted and people are looking for bigger apartments. More young professionals are sharing, more young families are moving to the city centre, and more people are looking for spaces to accommodate home working.

This increasing demand for two-bedroom apartments in the city centre is the reason why Manchester City Council is making it a priority for all new residential developments to provide a high proportion of two-bedroom apartments.

- Q4 2025 Completion
- A landmark destination in the heart of Manchester's creative capital
- 477 luxury one, two and three-bedroom apartments
- 32 storeys with spectacular views across the city
- Unrivalled wellbeing benefits including a swimming pool, spacious gymnasium, and 7th floor rooftop terrace
- The first development within Selects Prestige Collection
- 30% Deposit on exchange
- EPC TBC upon completion

Floor Plan



Viewing

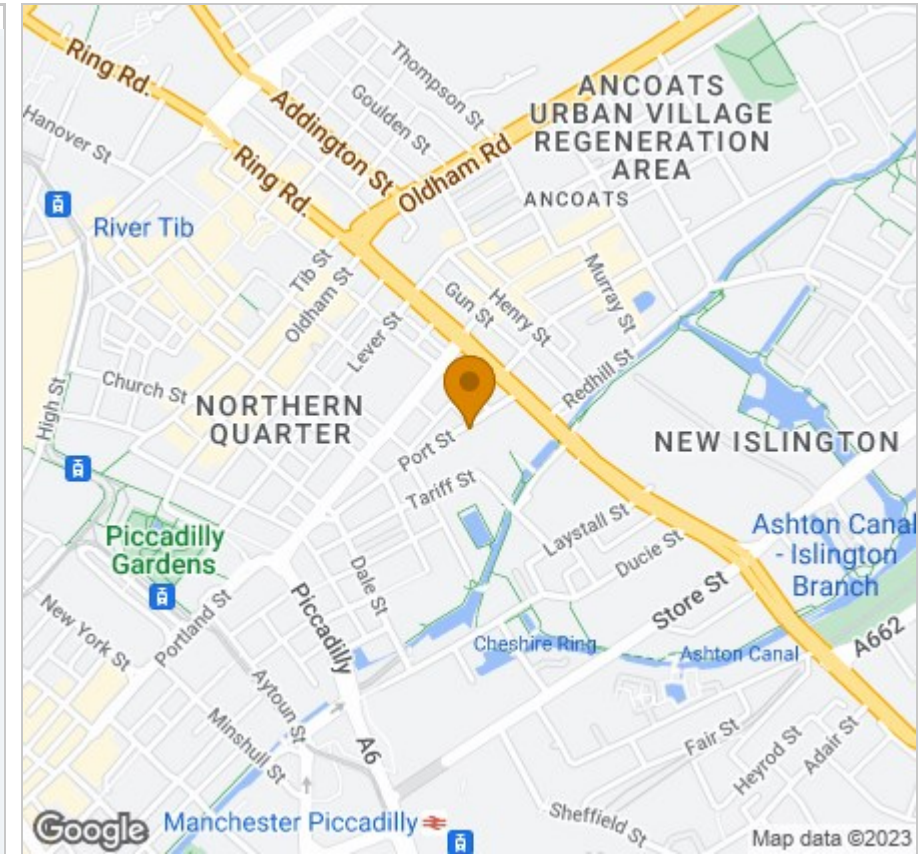
Please contact our Reside Manchester Office on 0161 837 2840 if you wish to arrange a viewing appointment for this property or require further information.

These particulars, whilst believed to be accurate are set out as a general outline only for guidance and do not constitute any part of an offer or contract. Intending purchasers should not rely on them as statements of representation of fact, but must satisfy themselves by inspection or otherwise as to their accuracy. No person in this firm's employment has the authority to make or give any representation or warranty in respect of the property.

249 Deansgate, Manchester, Greater Manchester, M3 4EN

Tel: 0161 837 2840 Email: info@residemanchester.com www.residemanchester.com

Area Map



Energy Efficiency Graph

