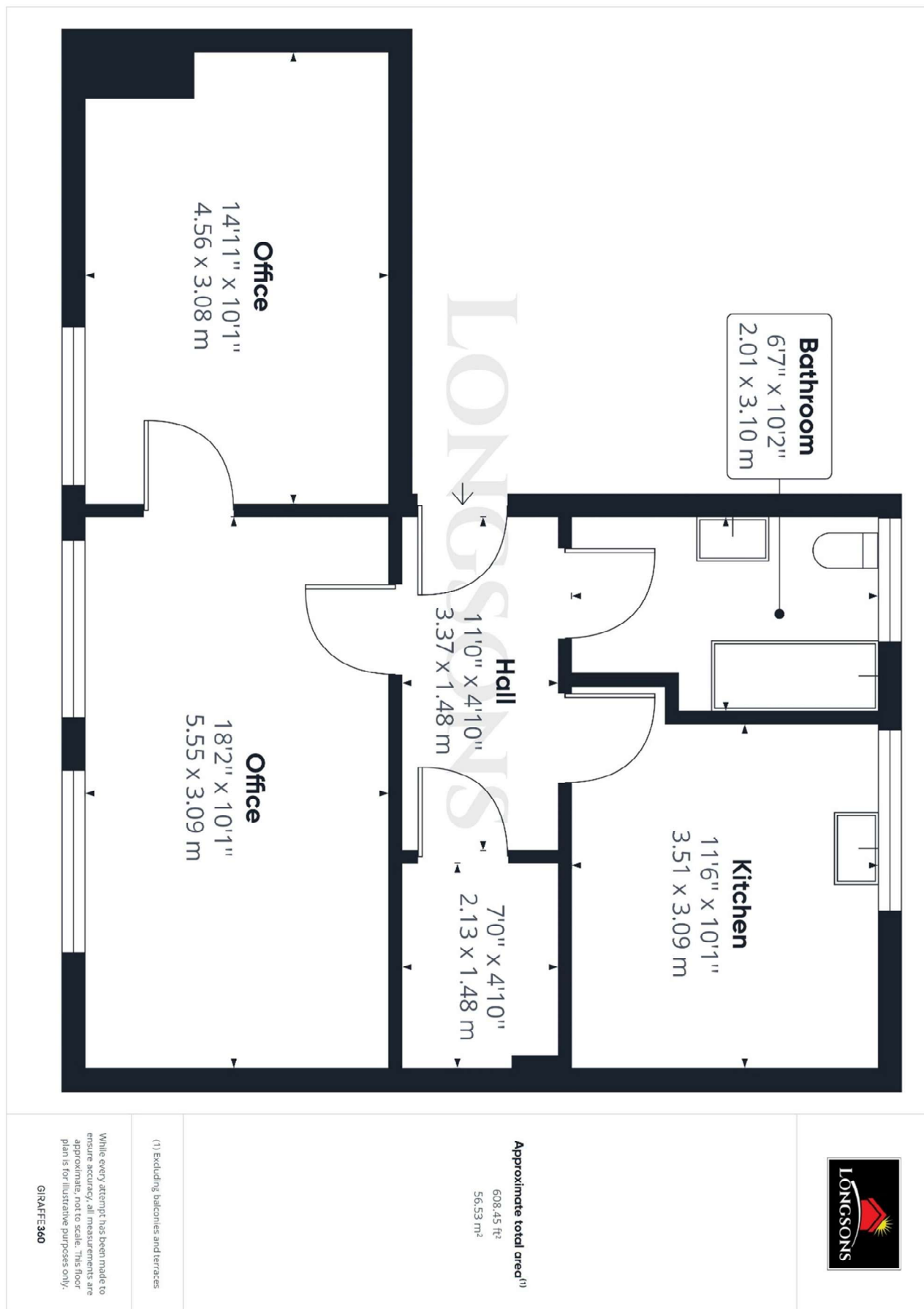


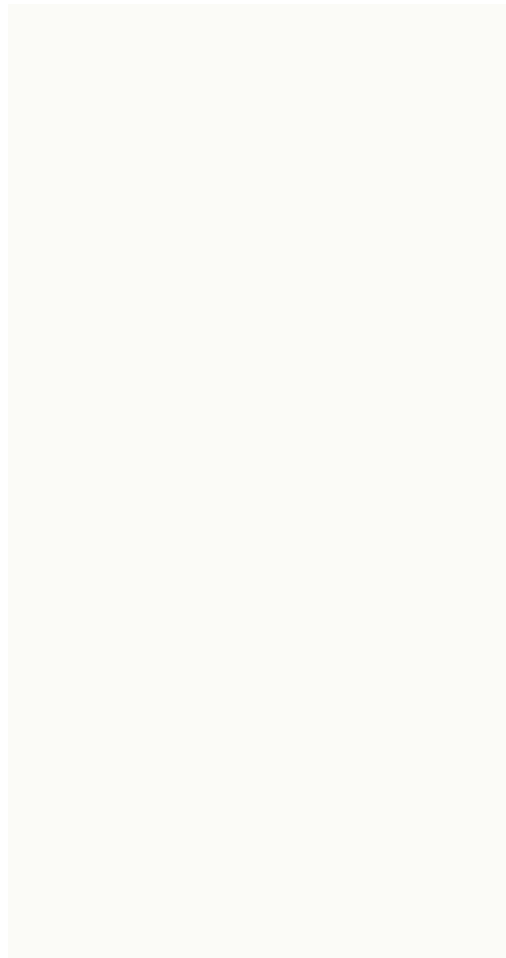
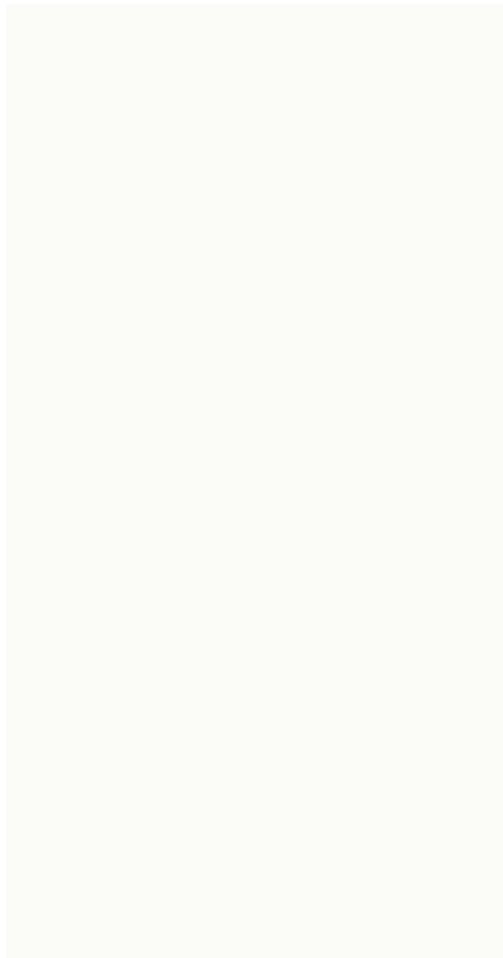


4 Ventura House, Norwich Road, Watton, Thetford, IP25 6JU

First floor commercial office available to let on the outskirts of Watton. The office unit offers communal entrance, two office rooms, kitchen, bathroom, entrance hall, security entrance door intercom. parking and electric heating.

Price £550 pcm To Let





- Office Space
- Two Office Rooms
- Kitchen and Bathroom
- Security Intercom
- Parking
- Electric Heating

Situated on a business park on the outskirts of Watton, Longsons are delighted to bring to the rental market this first floor office unit. The unit offers two office rooms, kitchen, bathroom, security entrance door intercom, parking and electric heating.

WATTON
 Swaffham 10 miles; Thetford 15 miles; Norwich 23 miles.
 The well-served market town of Watton is in the district of Breckland, just less than 25 miles from Norwich. Perfectly positioned for access to the whole of Norfolk and North Suffolk, this town is thought to be where the 'Babes in the Wood' were abandoned in Wayland Wood. You will see on the town sign that there are two babes, and a hare jumping over the barrel reflecting the town name; wat being the local dialect word for hare, and ton for barrel. There is a traditional market held every Wednesday morning with produce including freshly caught fish, and there are two supermarkets and a number of independent shops, cafes, restaurants and pubs to enjoy. Within reach is the popular Thetford Forest Park, a number of golf courses, other market towns and not forgetting the cathedral city of Norwich.

All photographs are provided for guidance only.

