

Greencroft Court Darlington

Apartments for rent to over 55s



Including:

- Manager service
- 24-hour emergency response
- Building and grounds maintenance
- Pet friendly environment



Your Anchor home

Live your life the way you want, with added peace of mind now and for the years ahead.

At Anchor we are leaders in housing and support services for people in later life.

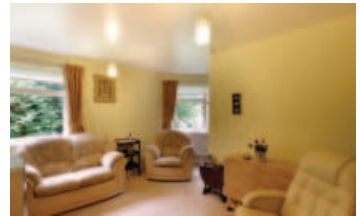
As a trusted provider with more than 50 years' experience we are here for you. We listen carefully and shape our homes and services around your changing needs. Plus, we reinvest all our profits and focus our efforts on supporting you.

Live with us and you'll not only have a warm, safe and comfortable home, but

also access to a wide range of services to support you for the long term.

Offering you more security

Most properties have a 24-hour emergency call and secure door entry system for your peace of mind. The majority also have a manager to oversee estate services such as building maintenance, repairs or gardening. They can also advise on how to access further support if required.



I consider it to be the best move I ever made. I feel confident that Anchor is considering the best ways to look after one's wellbeing.

Anchor customer



Freedom to make your home your own

Retaining your individuality and independence is important, therefore you're free to decorate your new home as you wish. And if your needs change in the future, we're here to advise and assist with any alterations to your home.

You'll usually be welcome to bring your pet to live with you too – please ask for details of our pet policy.

Social activities

At some estates we offer optional social activities where you can get to know your neighbours – you're welcome to take part in these as and when you wish.

Everything on your doorstep

At Greencroft Court retirement housing scheme in Darlington, we offer 22 one bedroom and 18 studio purpose-built properties for rent for people over the age of 55.

The property is situated close to Darlington Town Centre and has excellent transport links to the town centre, Barnard Castle and Bishop Auckland. The local shops are within walking distance and include a One Stop shop and a general store with an off-licence. There is a doctor's surgery within walking distance and several others which are on the local bus route.

We understand that sometimes you like to be alone and at other times you may want to be more sociable. Our properties give you that freedom. At Greencroft Court we run social activities including a lunch club, coffee mornings, bingo, darts, games evenings, musical entertainment and day trips.

You will not need to worry about maintenance and repairs or gardening upkeep as we take care of those. We provide a wide range of facilities, including a communal lounge, a guest room, a garden with seating area, an on-site laundry and 13 parking spaces.

Greencroft Court

Greencroft Close

Darlington, County Durham

DL3 8HW



Directions from A1(M) North

- Leave the A1(M) at Junction 58
- Join A68 direction Darlington
- Travel for 1.85 miles and at the roundabout take the 2nd exit onto the B6279
- Take the 1st turning left onto the B6280 Carmel Road North
- After 0.8 miles turn left onto Cleveland Terrace
- Take the 5th turning right onto Greencroft Close

Directions from A1(M) South

- Leave the A1(M) at Junction 57
- Join A66 direction Darlington
- At the roundabout take the 1st exit onto A66
- At the next roundabout take the 1st exit onto A67
- At the next roundabout take the 2nd exit onto B6280 Carmel Road North
- Take the 3rd turning right onto Cleveland Terrace
- Take the 5th turning right onto Greencroft Close



To find out more please call
our Customer Centre on:

0800 731 2020

Monday–Friday 8am–6pm,

Saturday 10am–4pm

[anchor.org.uk](https://www.anchor.org.uk)



Or contact the local
manager on:

01325 484 155

IMAGES Property images show the specific location, unless otherwise stated. People images show life in a typical Anchor community.

IMPORTANT NOTICE The information, images and other details about the property and the services we offer at the property given in this brochure are correct as 09-08-2022. You are advised to contact an Anchor Hanover Group representative for further details and to satisfy yourself as to their accuracy before you agree to rent a property from us.

Anchor Hanover Group is a charitable housing association with registered society No. 7843. Registered Provider No. LH4095. Registered office: Anchor Hanover Group, Suites A&B, The Heal's Building, 22-24 Torrington Place, London, WC1E 7HJ.