

## Springfield Crescent, Solihull, B92 9AF

Offers In Region Of £365,000

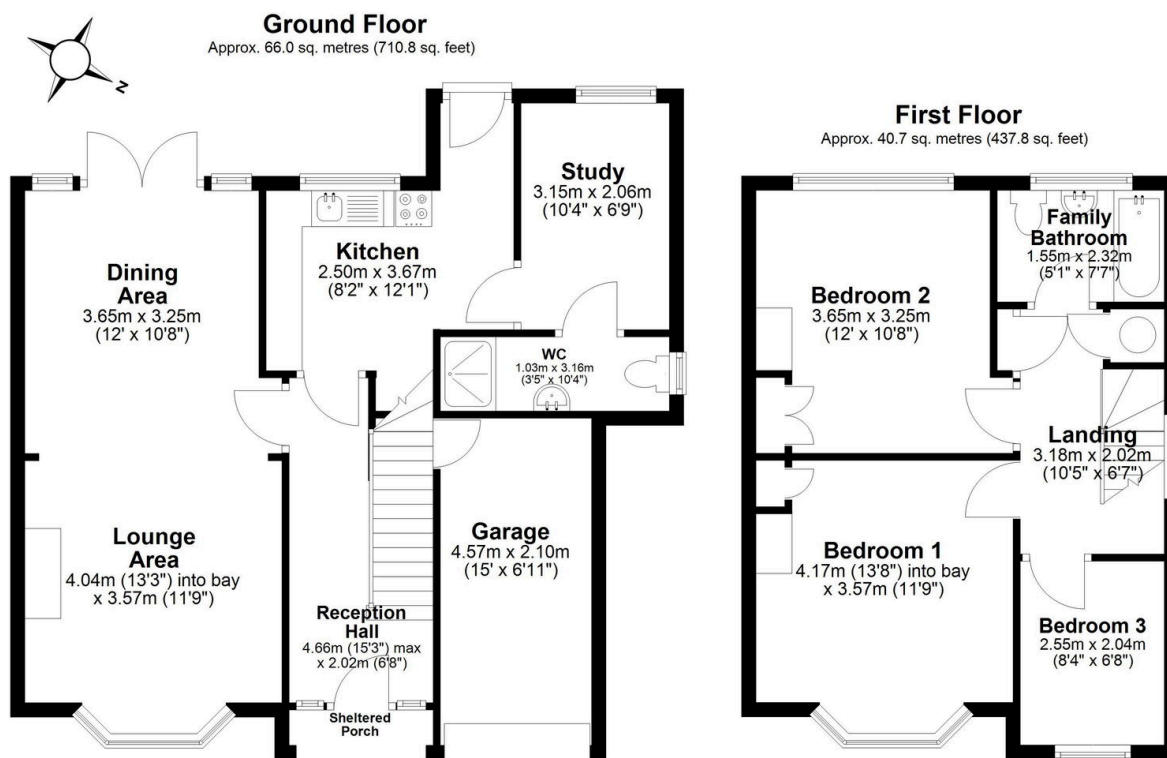
 3  2  3



Viewings are highly recommended for this well-presented three bedroom semi-detached family home situated on the sought-after Springfield Crescent in Solihull. NO UPWARD CHAIN!!

### Key Features

- NO UPWARD CHAIN
- Three bedroom semi-detached family home
- Spacious lounge with feature bay window
- Dining area with French doors opening onto the rear garden
- Fitted kitchen with good storage and worktop space
- Versatile ground floor study/home office
- Downstairs W.C. for added convenience
- Modern family bathroom
- Garage and driveway providing off-road parking
- Sought-after Solihull location close to schools, amenities, and transport links



Total area: approx. 106.7 sq. metres (1148.6 sq. feet)