

The Farmhouse, Wharf Farm, Dickens Heath Road

£1,025,000

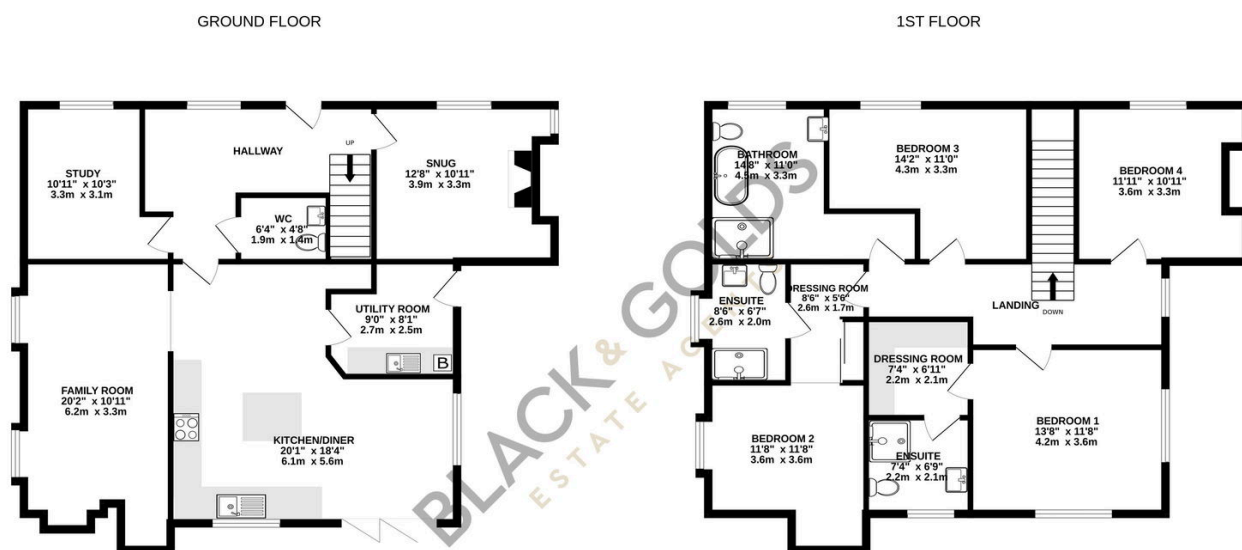
4 3 3



Wharf Farm, an exclusive and private gated development consisting of 8 detached new homes and a farmhouse conversion that are all positioned on the edge of Dickens Heath. Winners of the Best Contemporary Family Home Builder 2023, Greenvilla Homes are a family run well established business that have expert knowledge in what works and what doesn't to create the perfect family home. Each property is developed to an exceptional specification to include the likes of a bespoke kitchen with integrated appliances, bathrooms and en-suites styled in Porcelanosa flooring and tiles, solid oak doors and patio with turfed rear gardens.

Key Features

- Stunning Renovated Farmhouse Positioned Within Dickens Heath
- Family Room with Further Snug & Additional Office
- Gorgeous Wrap Around and Private Front & Rear Garden
- A Range of High Specification Fixtures & Fittings
- Circa 2300 sqft of Accommodation
- An Outstanding Open Plan Kitchen Dining Family Room
- Four Lovely Bedrooms with Two En-Suites and a Family Bathroom
- Detached Double Garage with Two Parking Spaces
- Ten Year New Build Guarantee



Whilst every attempt has been made to ensure the accuracy of the floorplan contained here, measurements of doors, windows, rooms and any other items are approximate and no responsibility is taken for any error, omission or mis-statement. This plan is for illustrative purposes only and should be used as such by any prospective purchaser. The services, systems and appliances shown have not been tested and no guarantee as to their operability or efficiency can be given.

Made with Metropix ©2025