

Wilfred Mews, Wythall, Birmingham, B47 6AX

Offers Over £280,000

2 1 1

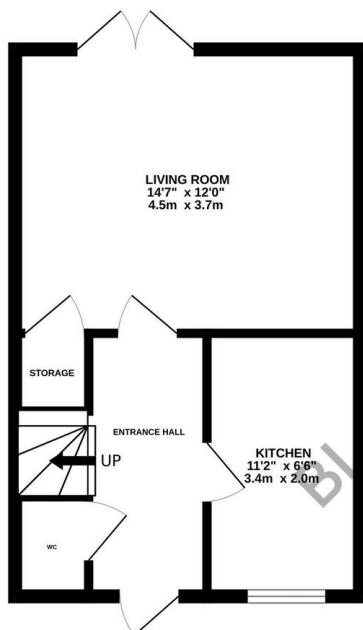


A Beautifully Presented Two-Bedroom Family Home in B47, Wythall - Viewings Highly Recommended. No Upward Chain!

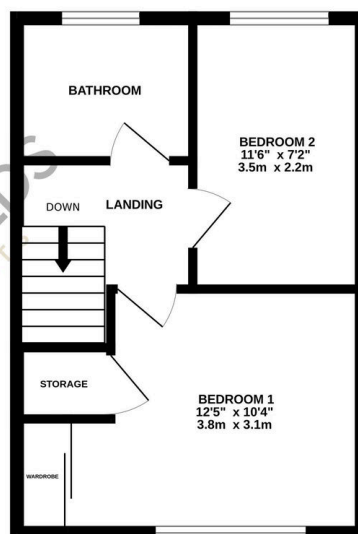
Key Features

- Two Bedroom Terrace
- No Upward Chain
- Sought After Location
- New Build Style
- Ideal First Time Home
- Semi Rural

GROUND FLOOR
339 sq.ft. (31.5 sq.m.) approx.



1ST FLOOR
319 sq.ft. (29.6 sq.m.) approx.



TOTAL FLOOR AREA: 657 sq.ft. (61.1 sq.m.) approx.

Whilst every attempt has been made to ensure the accuracy of the floorplan contained here, measurements of doors, windows, rooms and any other items are approximate and no responsibility is taken for any error, omission or mis-statement. This plan is for illustrative purposes only and should be used as such by any prospective purchaser. The services, systems and appliances shown have not been tested and no guarantee as to their operability or efficiency can be given.

Made with Metropix 62024