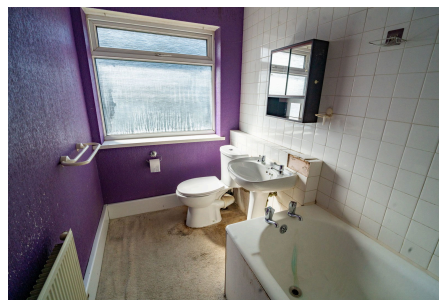


Greenland Rise, Solihull, B92 9LE

Offers Over £140,000

🛏 2 🚿 1 🛋 1

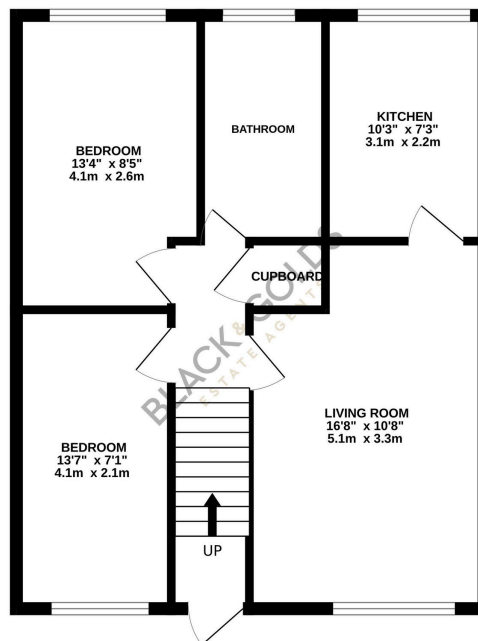


CASH BUYERS ONLY!! Two-Bedroom First-Floor Maisonette – Ideal for First-Time Buyers or Investors - SHORT LEASE OF 40 YEARS! Ideal for Cash Buyers!

Key Features

- Two Bedroom Maisonette
- Double Glazing
- First Time Buyers
- Viewings Highly Recommended
- First Floor
- Ideal Investment Opportunity
- Popular Location
- No Upward Chain

FIRST FLOOR
573 sq.ft. (53.2 sq.m.) approx.



TOTAL FLOOR AREA: 573 sq.ft. (53.2 sq.m.) approx.
While every attempt has been made to ensure the accuracy of the floorplan contained here, measurements of doors, windows, rooms and any other items are approximate and no responsibility is taken for any error, omission or mis-statement. This plan is for illustrative purposes only and should be used as such for any prospective purchaser. The services, systems and appliances shown have not been tested and no guarantee as to their operability or efficiency can be given.
Made with Metropex 12/2025