

Dordon Close, Shirley, Solihull, B90 1AH

Offers Over £350,000

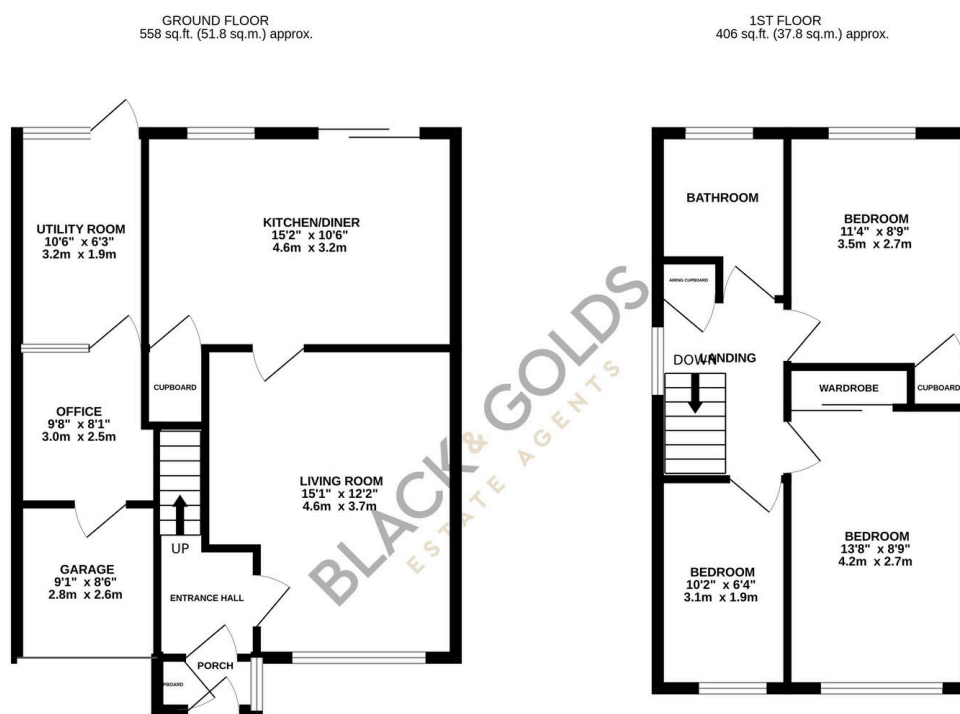
3 1 1



A Charming Three-Bedroom Semi-Detached Home on Dordon Road within close reach of Mill Lodge Primary School. Viewings Highly Recommended.

Key Features

- A Lovely Three Bedroom Semi Detached Property
- Dining Kitchen to Rear
- Downstairs Office
- Two Doubles and One Single Bedroom
- Nice Rear Garden
- Ideal Family Home
- Seperate Utility Room
- Garage/Store
- Off Road Parking
- Viewings Highly Recommended



TOTAL FLOOR AREA: 964 sq.ft. (89.6 sq.m.) approx.

Whilst every attempt has been made to ensure the accuracy of the floorplan contained here, measurements of doors, windows, rooms and any other items are approximate and no responsibility is taken for any error, omission or mis-statement. This plan is for illustrative purposes only and should be used as such by any prospective purchaser. The services, systems and appliances shown have not been tested and no guarantee as to their operability or efficiency can be given.

Made with Metropix 62025